

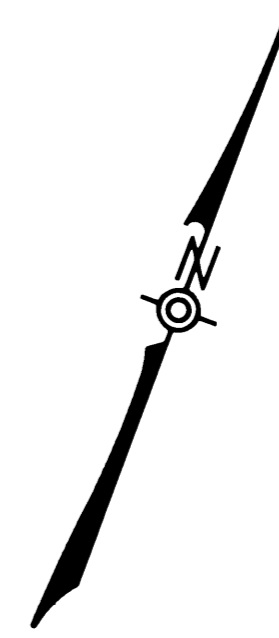
SURVEYORS FILE DATA
NOT REMOVE FROM OFFICE

LOCATION HORIZONTAL CONTROL SURVEY AND RECOVERY MAP

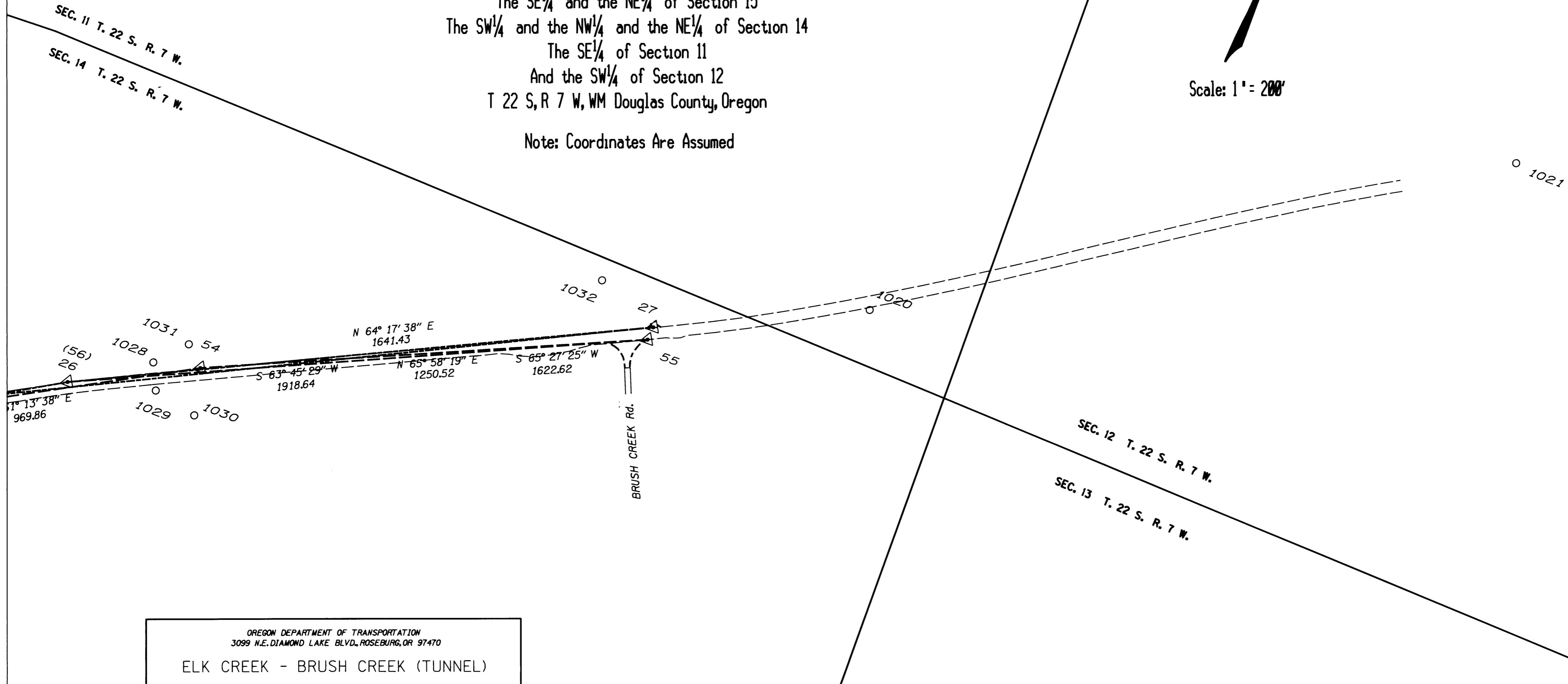
FOR THE OREGON DEPARTMENT OF TRANSPORTATION

In the NW¹/₄ and the NE¹/₄ of Section 22
The SE¹/₄ and the NE¹/₄ of Section 15
The SW¹/₄ and the NW¹/₄ and the NE¹/₄ of Section 14
The SE¹/₄ of Section 11
And the SW¹/₄ of Section 12
T 22 S, R 7 W, WM Douglas County, Oregon

Note: Coordinates Are Assumed



Scale: 1" = 200'



OREGON DEPARTMENT OF TRANSPORTATION
3099 N.E. DIAMOND LAKE BLVD., ROSEBURG, OR 97470

ELK CREEK - BRUSH CREEK (TUNNEL)
HORIZONTAL CONTROL MAP

COUNTY: DOUGLAS HIGHWAY: DRAIN - ELKTON
COORDINATES: ASSUMED EA: C0101807
BEARINGS: ODOT R/W Map 4B-16-12 KEY NO.: 03470
DESIGNER: BOB PAPPE PROJECT MANAGER: ROGER E. PATITZ, P.L.S.
CADD FILE LOCATION: R3220: /usr/r3/projects/03470/03470cm.dgn
SCALE: ONE INCH EQUALS 200 FEET
JULY 1992

REGISTERED
PROFESSIONAL
LAND SURVEYOR

Roger E. Patitz

OREGON
JULY 11, 1988
ROGER E. PATITZ
906

SYMBOL LEGEND	
	SET TRAVERSE POINT AS NOTED IN TABLE
	FOUND MONUMENT AS NOTED IN TABLE
	Control Traverse
	Secondary Traverses