

BOUNDARY & TOPOGRAPHIC SURVEY

LOCATED in Lot 3, GABBERTS SECOND ADDITION to the Town of Myrtle Creek and the SW 1/4 of Section 22, Township 29 South, Range 5 West of the Willamette Meridian in Douglas County, Oregon.

July 31, 1989

SURVEYED FOR: *United States Postal Service
Kent Facilities Service Office
P.O. Box 2000
Kent, Washington 98035*

SURVEYED BY: *Edwards Surveying and Land Planning Inc.
1014 East Pine Street
Central Point, Oregon 97502
Phone: (503) 664-1539*

David A. Edwards

LEGAL DESCRIPTION

Beginning at a 5/8 inch diameter steel pin marking a point on the West line of Maple Avenue which bears 248.09 feet North and 454.36 feet East from a brass capped monument marking the corner common to Sections 21, 22, 27 and 28, Township 29 South, Range 5 West of the Willamette Meridian, Town of Myrtle Creek, Douglas County, Oregon; thence North 0° 28' 59" East, along said West line, 284.85 feet to a point on the South line of Rice Street; thence North 88° 45' 27" West, along said South line, 155.00 feet to a 5/8 inch diameter steel pin; thence South 0° 28' 59" West, parallel with said West line of Maple Avenue 284.85 feet to a 5/8 inch diameter steel pin; thence South 88° 45' 27" East, parallel with said South line, 155.00 feet to the point of beginning.

SURVEYOR'S CERTIFICATE

I, David A. Edwards, a registered professional land surveyor of the State of Oregon, do hereby certify that this map represents a survey made by me and that the data shown hereon is true and correct.

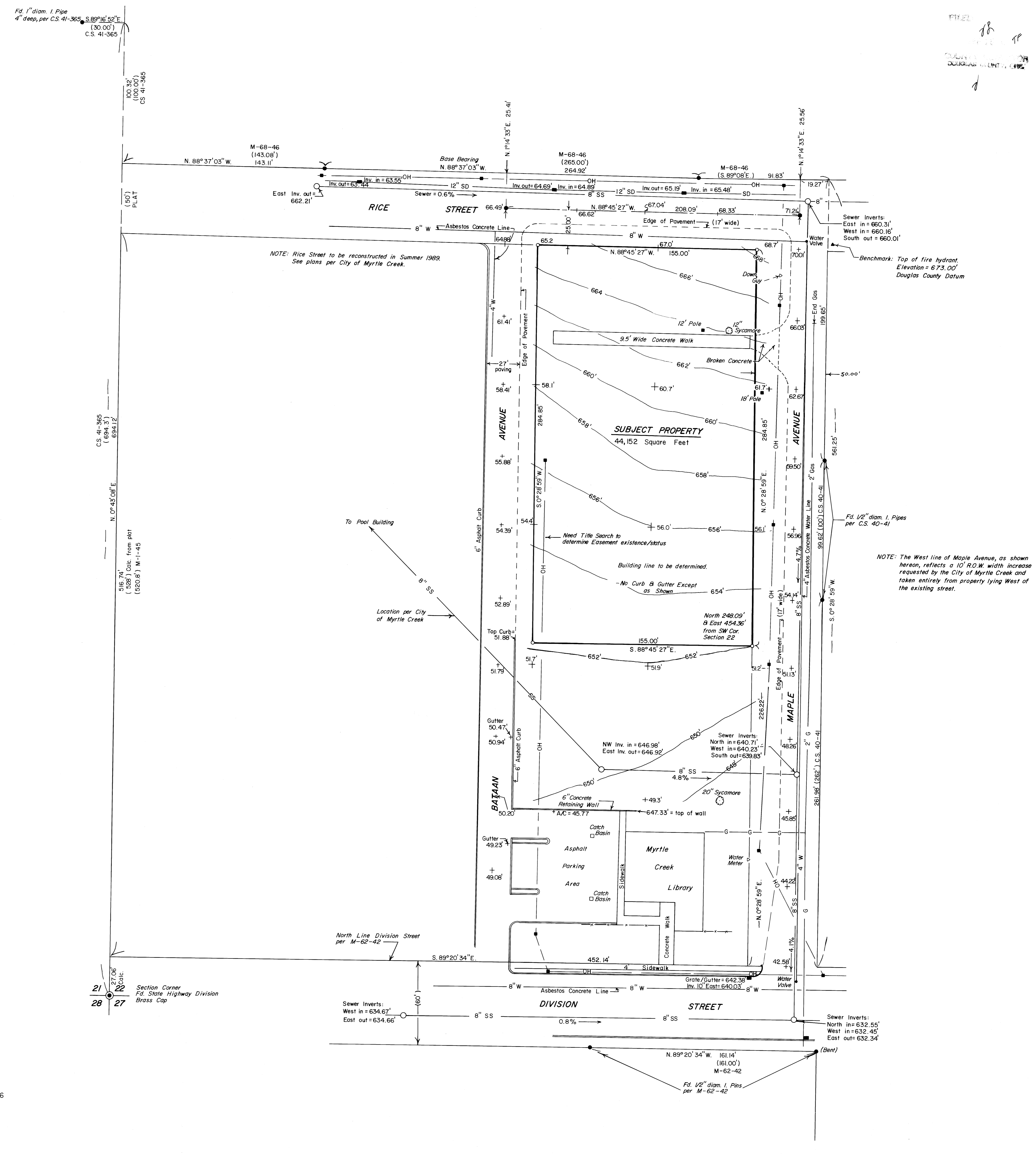
David A. Edwards
David A. Edwards R.P.L.S. 2339

LEGEND

- Indicates Monument found as noted.
- Indicates 5/8" x 24" steel pin w/plastic cap mkd. "D.A. EDWARDS - RPLS 2339" set.
- () Denotes Record Data as Noted
- Utility Pole (carrying electric power and telephone)
- Sanitary Sewer Manhole
- Storm Drain Catch Basin
- x—x—x Fence
- ss—ss— Sanitary Sewer Line (concrete)
- SD—SD— Storm Drain Line (concrete)
- G—G— Natural Gas Line
- W—W— Water Line
- OH—OH— Overhead Power and Telephone
- Indicates 1" diam. Iron pin found per RM-1-23
- Indicates 6" concrete curb except where noted
- Inv.= Invert
- Fd.= Found
- "Plat" refers to GABBERTS SECOND ADDITION
- "Pavement" is Asphaltic Concrete
- SCALE: 1" = 30'

This map is accompanied by a separate narrative.

BASIS OF BEARINGS: Recorded Survey M68-46



RM-3-74

RM-3-74

CS 63/100mm
RM-3-74