

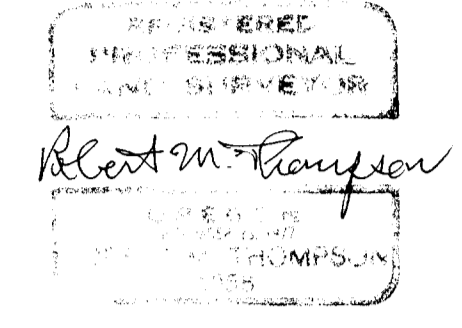
C.S. FILE NO. 38/275 (N)
MAP FILE 3-61

FILED 11
RECEIVED 28
JUL 30 1984
COUNTY SURVEYOR
DOUGLAS COUNTY, ORE.

SURVEY TO SET AND MARK CERTAIN BOUNDARIES AND CORNERS IN SECTION 5, T33S, R6W, W.M.

DOUGLAS COUNTY, ORE.

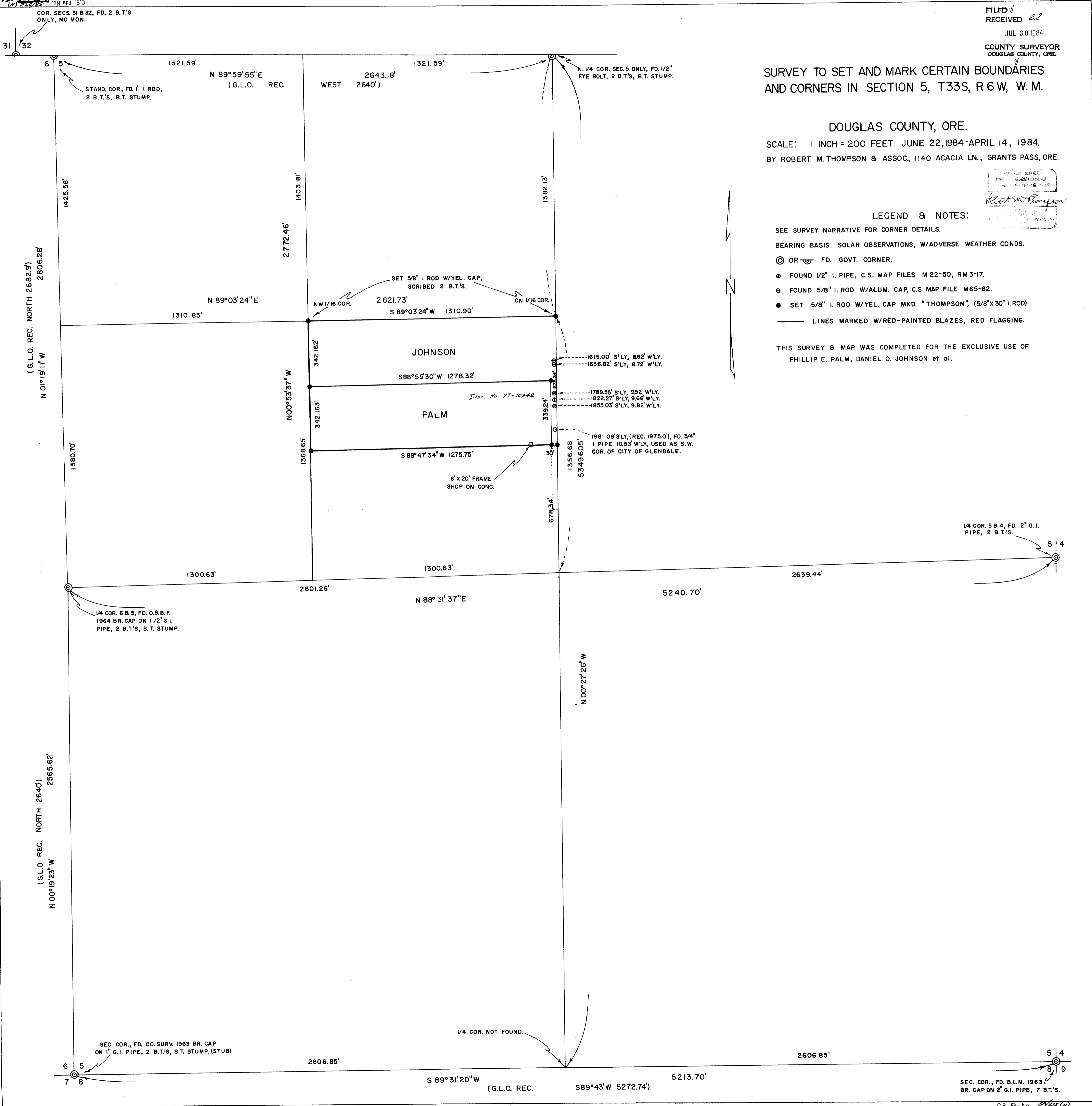
SCALE: 1 INCH = 200 FEET JUNE 22, 1984-APRIL 14, 1984
BY ROBERT M. THOMPSON & ASSOC., 1140 ACACIA LN., GRANTS PASS, ORE.



LEGEND & NOTES:

- SEE SURVEY NARRATIVE FOR CORNER DETAILS.
- BEARING BASIS: SOLAR OBSERVATIONS, W/ADVERSE WEATHER CONDS.
- ⊙ OR ⊕ FD. GOVT. CORNER.
- ⊕ FOUND 1/2" I. PIPE, C.S. MAP FILES M 22-50, RM 3-17.
- ⊕ FOUND 5/8" I. ROD W/ALUM. CAP, C.S. MAP FILE M 65-62.
- SET 5/8" I. ROD W/YEL. CAP MKD. "THOMPSON". (5/8" X 30" I. ROD)
- LINES MARKED W/RED-PAINTED BLAZES, RED FLAGGING.

THIS SURVEY & MAP WAS COMPLETED FOR THE EXCLUSIVE USE OF PHILLIP E. PALM, DANIEL O. JOHNSON et al.



1/4 COR. 5 & 4, FD. 2" G.I. PIPE, 2 B.T.'S.

1/4 COR. 6 & 5, FD. O.S.B.F. 1964 BR. CAP ON 1 1/2" G.I. PIPE, 2 B.T.'S, B. T. STUMP.

1/4 COR. NOT FOUND.

SEC. COR., FD. B.L.M. 1963 BR. CAP ON 2" G.I. PIPE, 7 B.T.'S.

C.S. File No. 38/275 (N)
MAP FILE 3-61

V.W. 2-21