

FILED *BJ*  
 RECEIVED *JRL*  
 MAR 5 1982  
 COUNTY SURVEYOR  
 DOUGLAS COUNTY, ORE.  
*BJ*

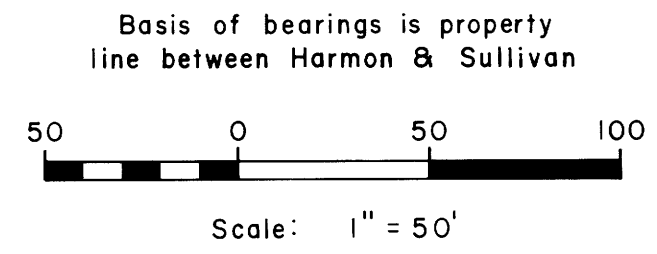
NARRATIVE

See C.S. File No. 58/268  
 for narrative.

1975 LEGEND

- Corner found (as noted) •
- Corner set (5/8" iron rod with aluminum cap) ○
- Corner computed, not set □
- Boyer's subd. survey, 1946, Projected - - - - -

See Notes at Particular Corners for 1982 Reappraisal. Only Those Corners with Notes were Tied; i.e. along South and East sides of Harmon Property.



Lot 3 (Earl & Marion Epps)

Lot 4, Sullivan Property (now Paul Sherrill)

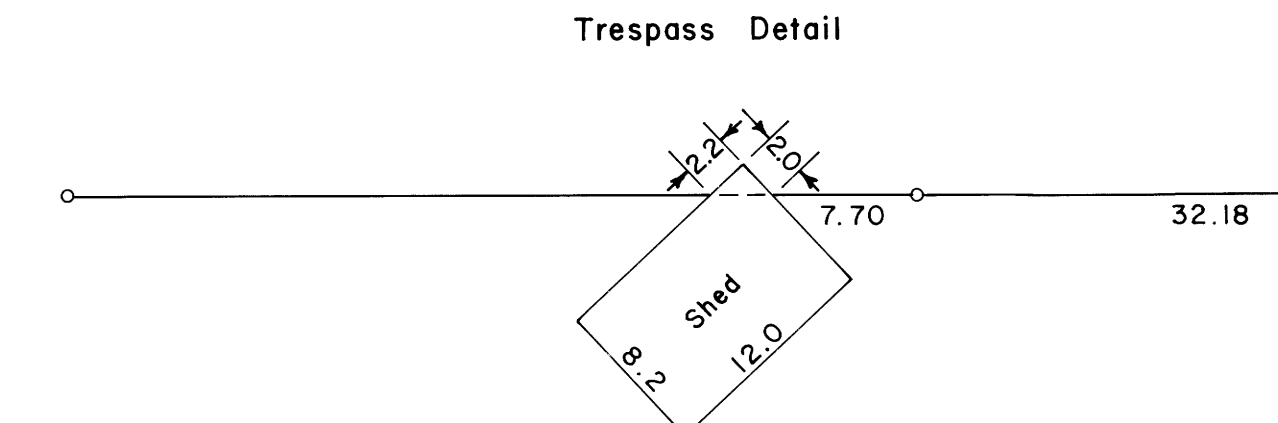
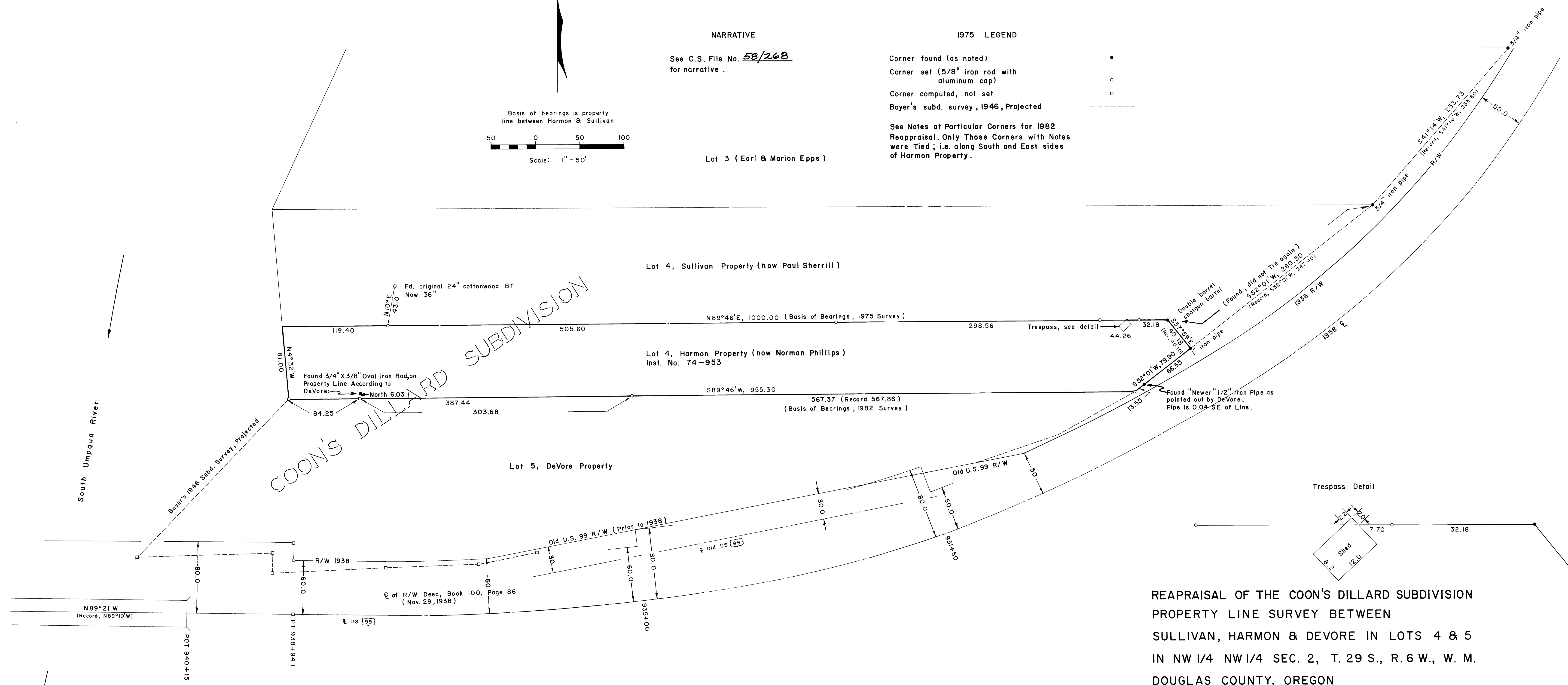
Lot 4, Harmon Property (now Norman Phillips)  
 Inst. No. 74-953

Lot 5, DeVore Property

COON'S DILLARD SUBDIVISION

South Umpqua River

Boyer's 1946 subd. Survey, Projected



REAPPRAISAL OF THE COON'S DILLARD SUBDIVISION  
 PROPERTY LINE SURVEY BETWEEN  
 SULLIVAN, HARMON & DEVORE IN LOTS 4 & 5  
 IN NW 1/4 NW 1/4 SEC. 2, T. 29 S., R. 6 W., W. M.  
 DOUGLAS COUNTY, OREGON

By: Shaner Engineering, Inc., Roseburg, Ore. 97470  
 March 8, 1975  
 February 25, 1982

*BA Shaner*

C.S. File 58/268 RM 3-56

C.S. File 58/268 RM 3-56