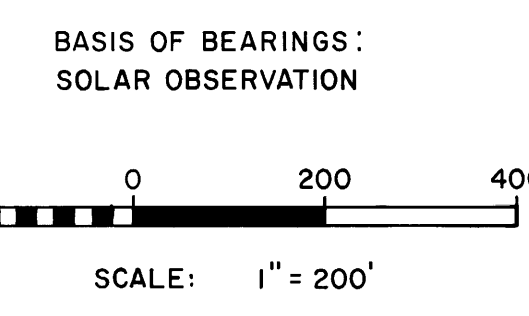
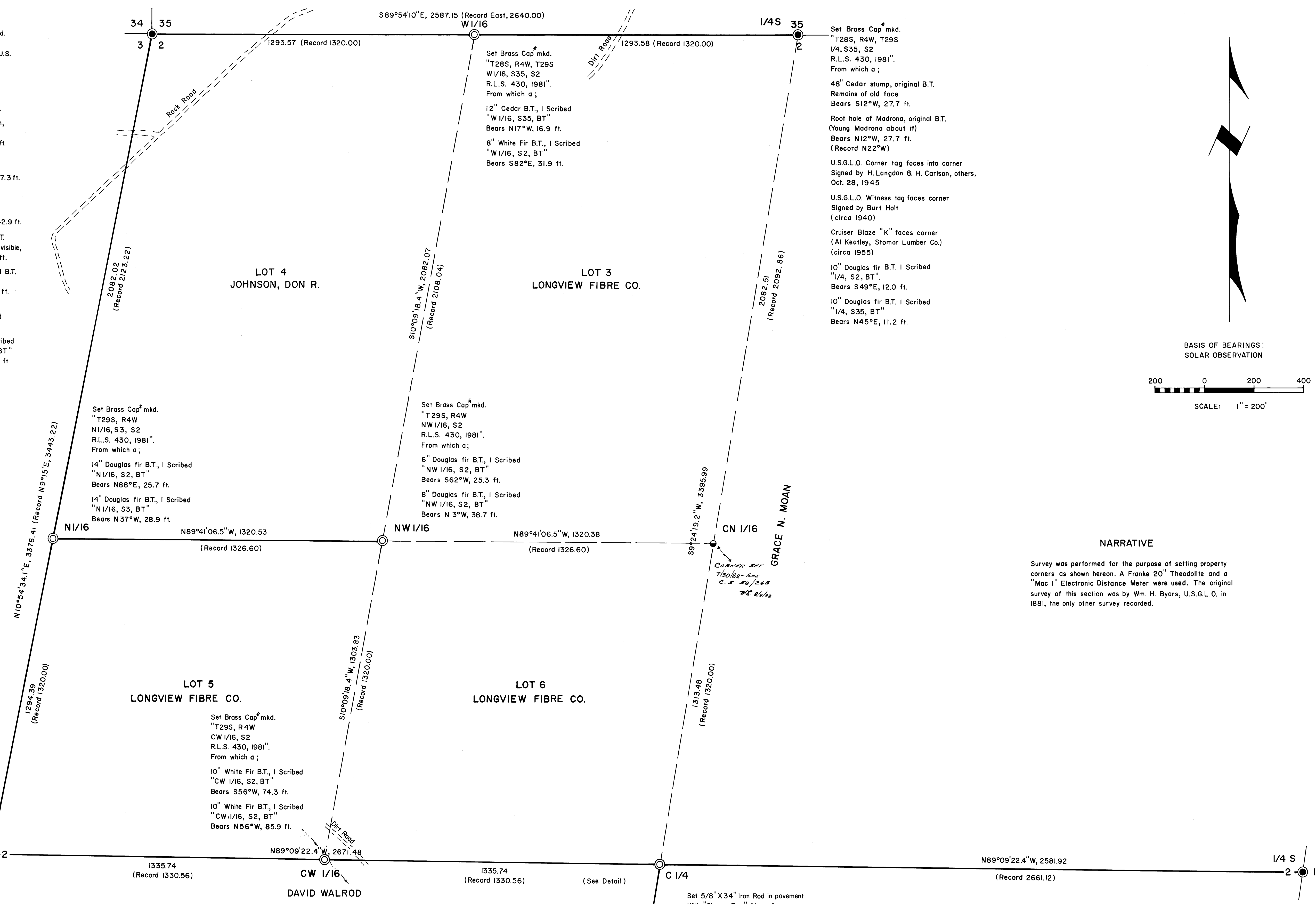


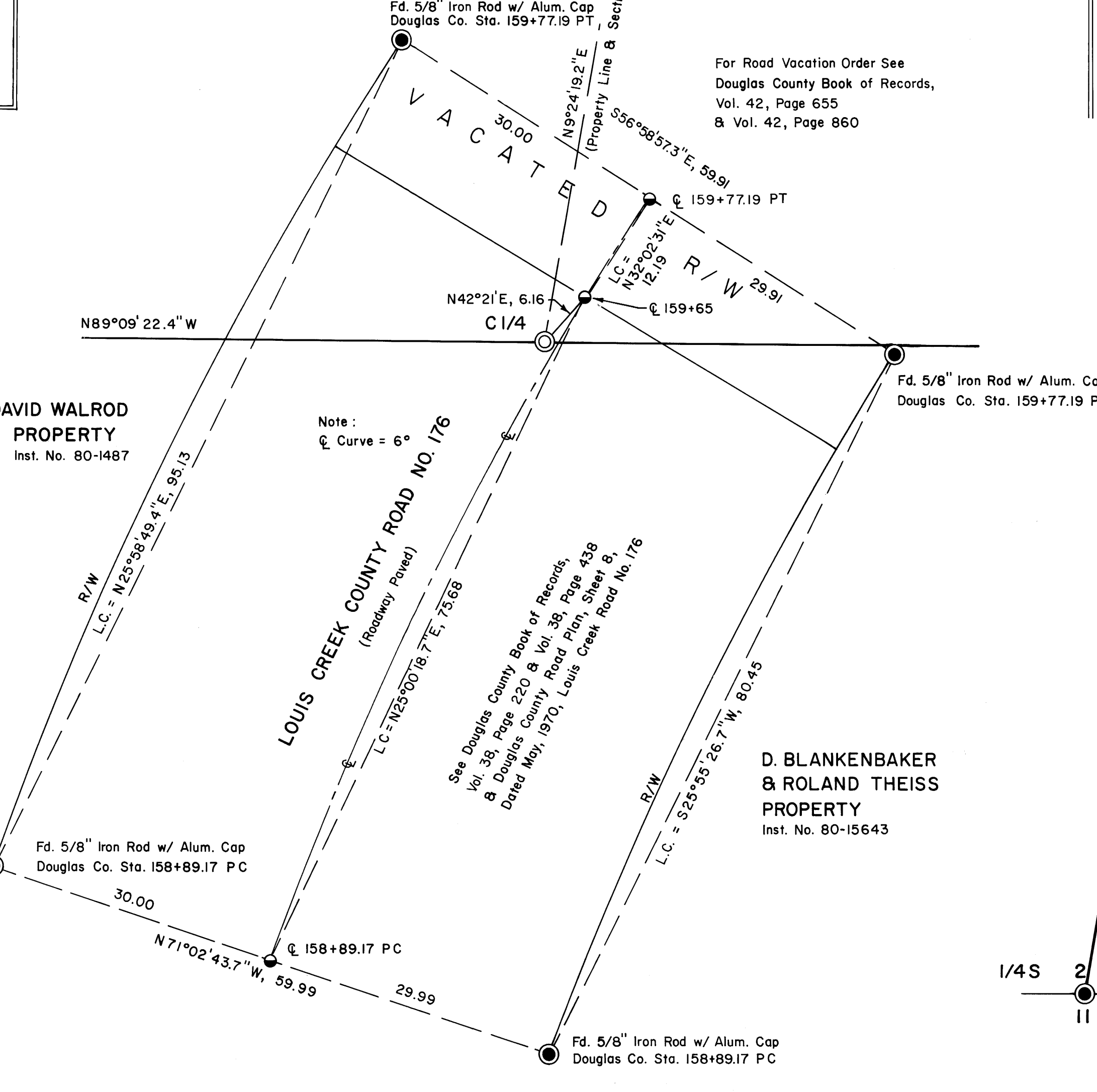
Found Brass Cap mkd.
 "T285, R4W, T29S
 S34, S35, S3, S2, U.S.
 B.L.M. 1958".
 From which a;
 20" White Fir B.T.
 Healed over face
 Bears N30°E, 7.9 ft.
 20" Cedar B.T., down,
 Scribes visible,
 Bears S35°E, 62.7 ft.
 24" Cedar B.T.
 Healed over face
 Bears S80 1/2°E, 37.3 ft.
 (Record 36.3 ft.)
 18" Douglas fir B.T.
 Healed over face
 Bears N66 1/2°W, 42.9 ft.
 18" Cedar, original B.T.
 Now down, no marks visible,
 Bears S80°E, 16.5 ft.
 22" Fir snag, original B.T.
 Scribes visible,
 Bears S60°W, 27.7 ft.
 N.E. original B.T.
 Rotted and scattered
 about general area.
 8" Cedar B.T., 1 Scribed
 "T29S, R4W, S2, BT"
 Bears S27°E, 52.0 ft.



NARRATIVE

Survey was performed for the purpose of setting property corners as shown hereon. A Franke 20" Theodolite and a "Mac 1" Electronic Distance Meter were used. The original survey of this section was by Wm. H. Byers, U.S.G.L.O. in 1881, the only other survey recorded.

DETAIL



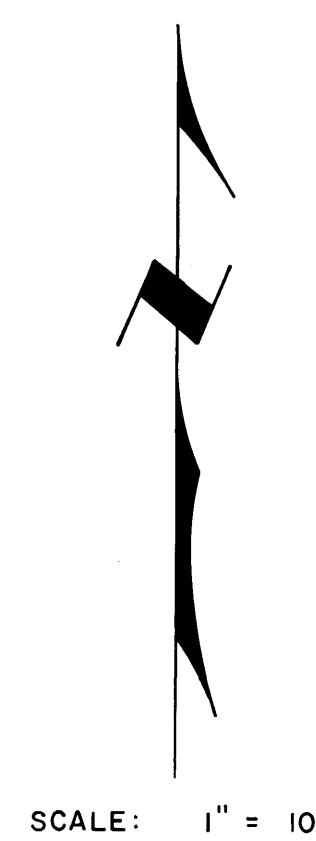
Set 5/8" X 3/4" Iron Rod in pavement
 With "Shaner Eng." Alum. Cap
 From which a;
 14" Cedar B.T., 1 Scribed
 "C 1/4, S2, BT"
 Bears N21°E, 52.3 ft.
 26" Cedar B.T., 1 Scribed
 "C 1/4, S2, BT"
 Bears N69°W, 74.8 ft.
 16" Cedar B.T., 1 Scribed
 "C 1/4, S2, BT"
 Bears S76 1/2°E 44.0 ft.

Found Brass Cap mkd.
 "T29S, R4W
 1/4, S2, S1
 County Surveyor 1965".
 From which a;
 36" Douglas fir B.T.
 Bark scribes visible
 Bears N5°E, 21.0 ft.
 30" White Fir B.T.
 Small healed over face
 Bears S33°W, 26.5 ft.
 (Record 20" Hemlock)

LEGEND

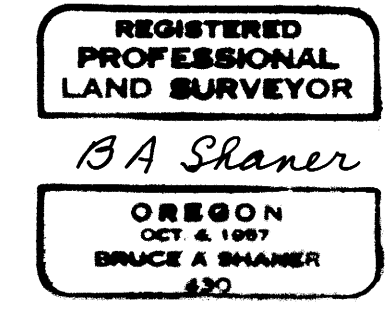
- Corner found ●
- Corner set ○
- Corner Computed, Not Set ◐
- Line Traversed ———
- Line Computed, Not Run - - - - -
- Road Road (or dirt road) = = = = =

* Note: All Brass Caps Set were 2 1/2" Diameter
 On a 2" X 36" Iron Pipe, with a steel
 fence post alongside.



SURVEY TO SET PROPERTY CORNERS IN SECTION 2, T29S, R4W, W.M. DOUGLAS COUNTY, OREGON

For: Longview Fibre Company
 P.O. Box 578
 Roseburg, Oregon 97470
 By: Shaner Engineering, Inc.
 P.O. Box 1430
 Roseburg, Oregon 97470



October, 1981 through January, 1982