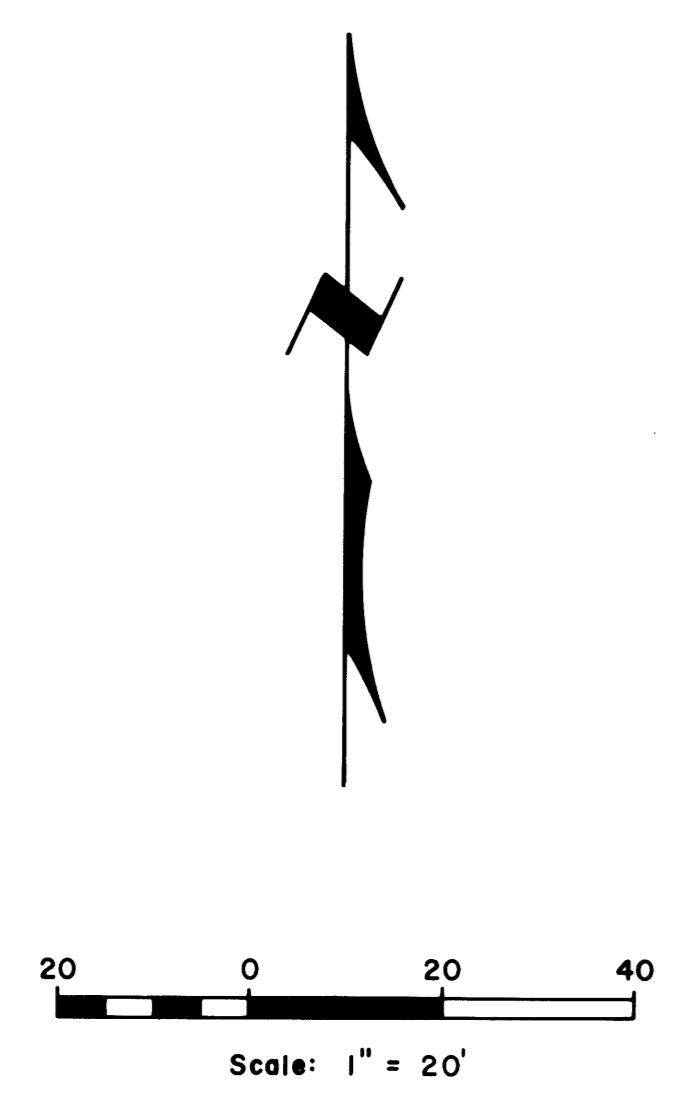


2-2-79

MAP FILE P/223-553

**PROPERTY LINE SURVEY OF SCHOOL TRACT
IN THE NW 1/4 SW 1/4 SECTION 33, T20S,
R6W, W. M., DOUGLAS COUNTY, OREGON**
For: North Douglas School District No. 22
Drain, Oregon 97435
By: Shaner Engineering, Inc.
P. O. Box 1430
Roseburg, Oregon 97470
November 12, 1979

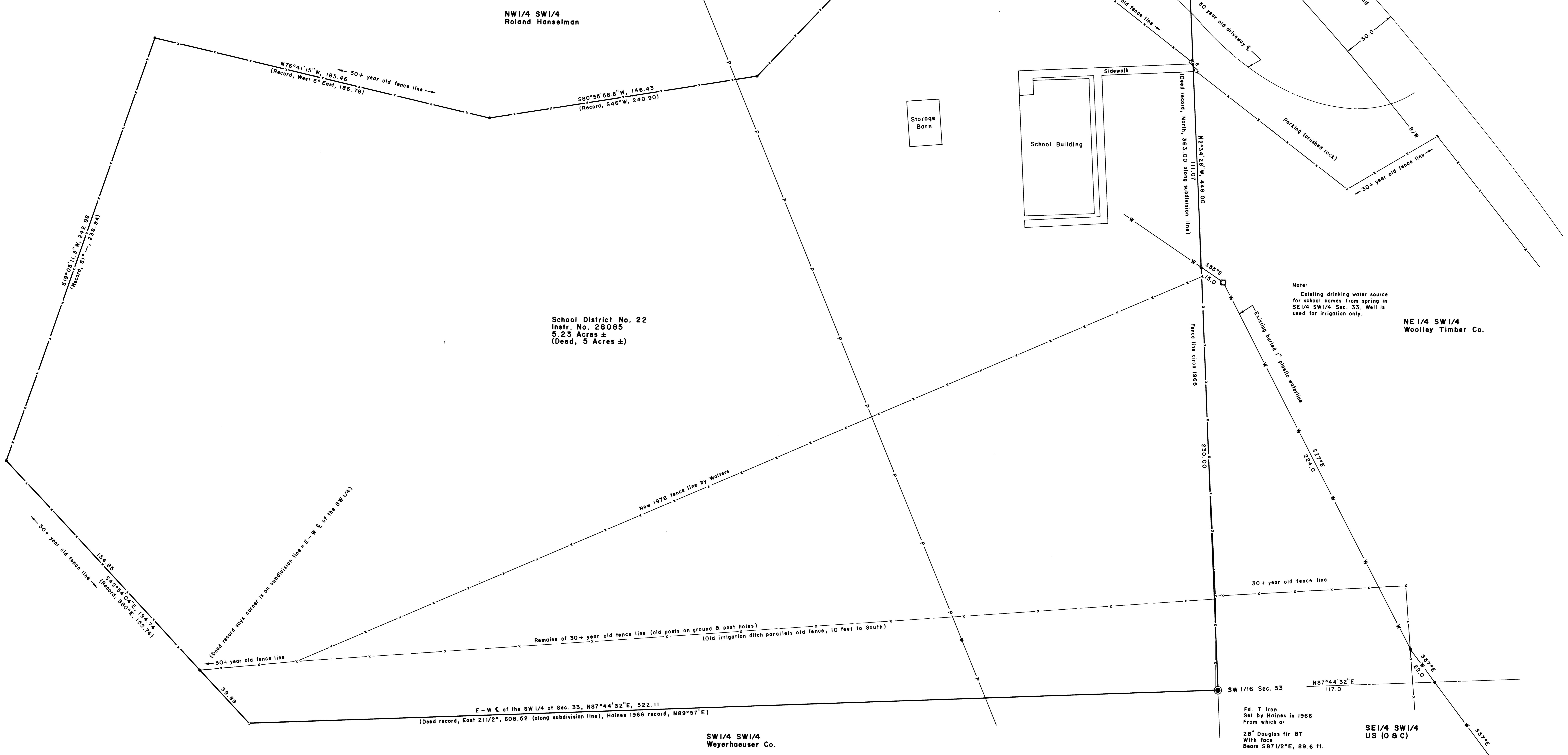
FILED
RECEIVED
JAN 8 1980
COUNTY SURVEYOR
DOUGLAS COUNTY, ORE



Basis of Bearings: Magnetic declination 20° E.
(To match Haines' 1966 survey, rotate our bearings Right 2° 12' 28".)

REGISTERED
PROFESSIONAL
LAND SURVEYOR
BH Shaner
OREGON
SINCE 1967
BRUCE A. SHANER
L.S.

- LEGEND**
- Corner found (2" iron pipe) •
 - Corner set (5/8" iron rod with aluminum cap) ○
 - Corner computed (not set) ◊
 - Gate
 - Power line
 - Power pole
 - Well house



School District No. 22
Instr. No. 28085
5.23 Acres ±
(Deed, 5 Acres ±)

Note:
Existing drinking water source
for school comes from spring in
SE 1/4 SW 1/4 Sec. 35. Well is
used for irrigation only.

SW 1/4 SW 1/4
Weyerhaeuser Co.

NE 1/4 SW 1/4
Woolley Timber Co.

Fd. T Iron
Set by Haines in 1966
From which:
28" Douglas fir BT
With face
Bears S87 1/2° E, 89.6 ft.

MAP FILE P/223-553

2-2-79