

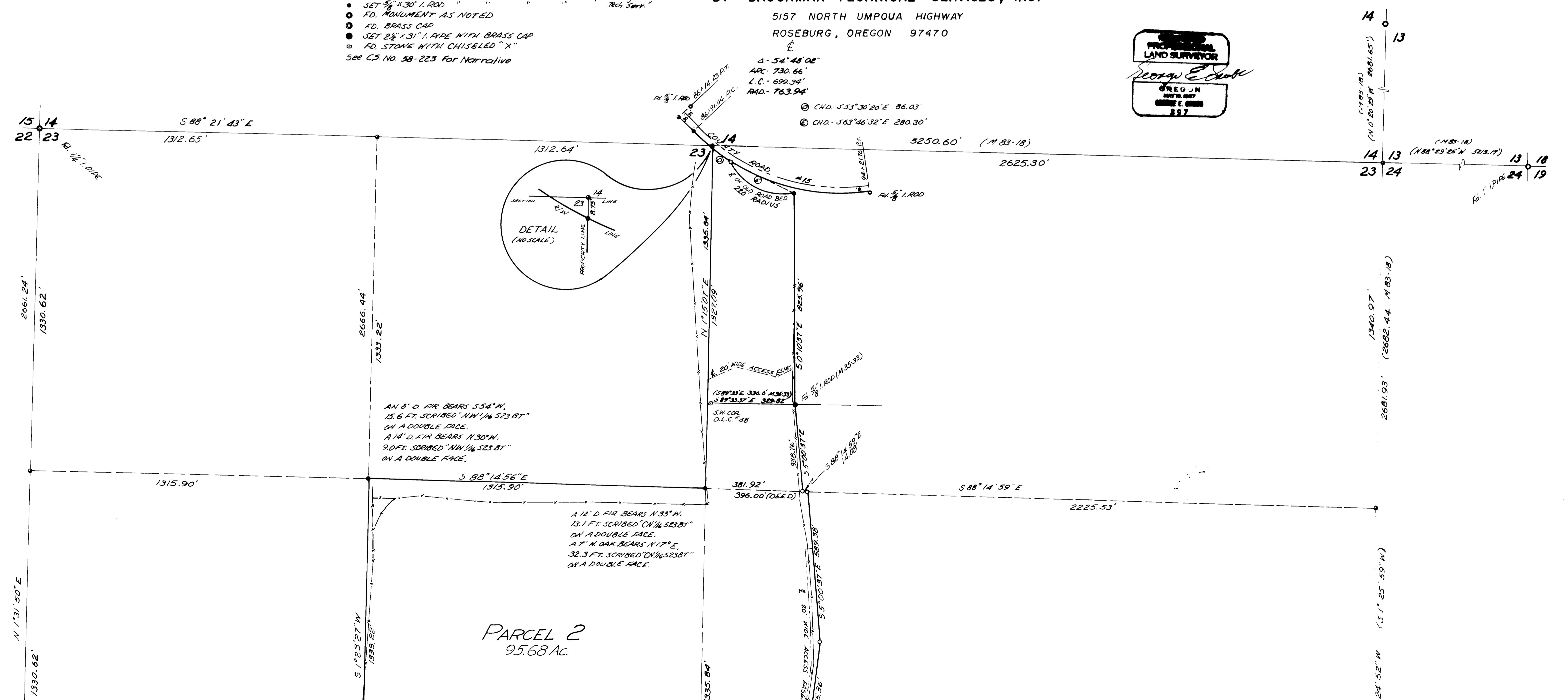
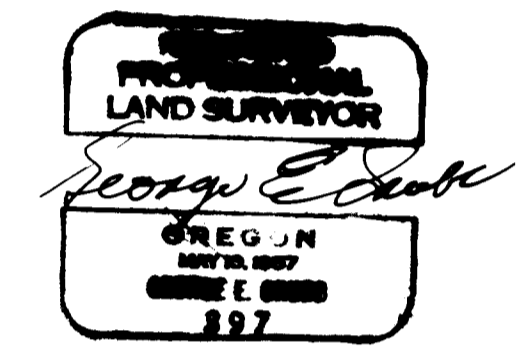
FILED
RECEIVED
DEC 28 1981
COUNTY SURVEYOR
DOUGLAS COUNTY, ORE.
7

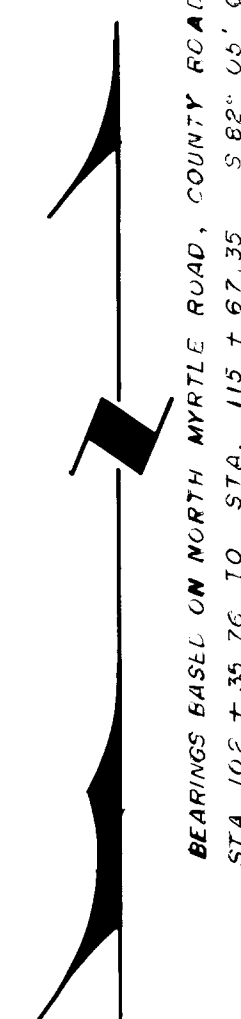
SURVEY IN SECTION 23, T29S, R5W, W.M.

SCALE: 1" = 200'

- LEGEND**
- POINT CALCULATED (NO MONUMENT FD. OR SET)
 - SET 1/2" x 24" I. ROD WITH YELLOW PLASTIC CAP STAMPED "Baughman Tech. Serv."
 - SET 3/8" x 30" I. ROD
 - FD. MONUMENT AS NOTED
 - FD. BRASS CAP
 - SET 2 1/2" x 31" I. PIPE WITH BRASS CAP
 - FD. STONE WITH CHISELED "X"
- See GS No. 58-223 For Narrative

FOR: FORD FAMILY TRUST NO. ONE
BY: BAUGHMAN TECHNICAL SERVICES, INC.
5157 NORTH UMPQUA HIGHWAY
ROSEBURG, OREGON 97470
DECEMBER 1981





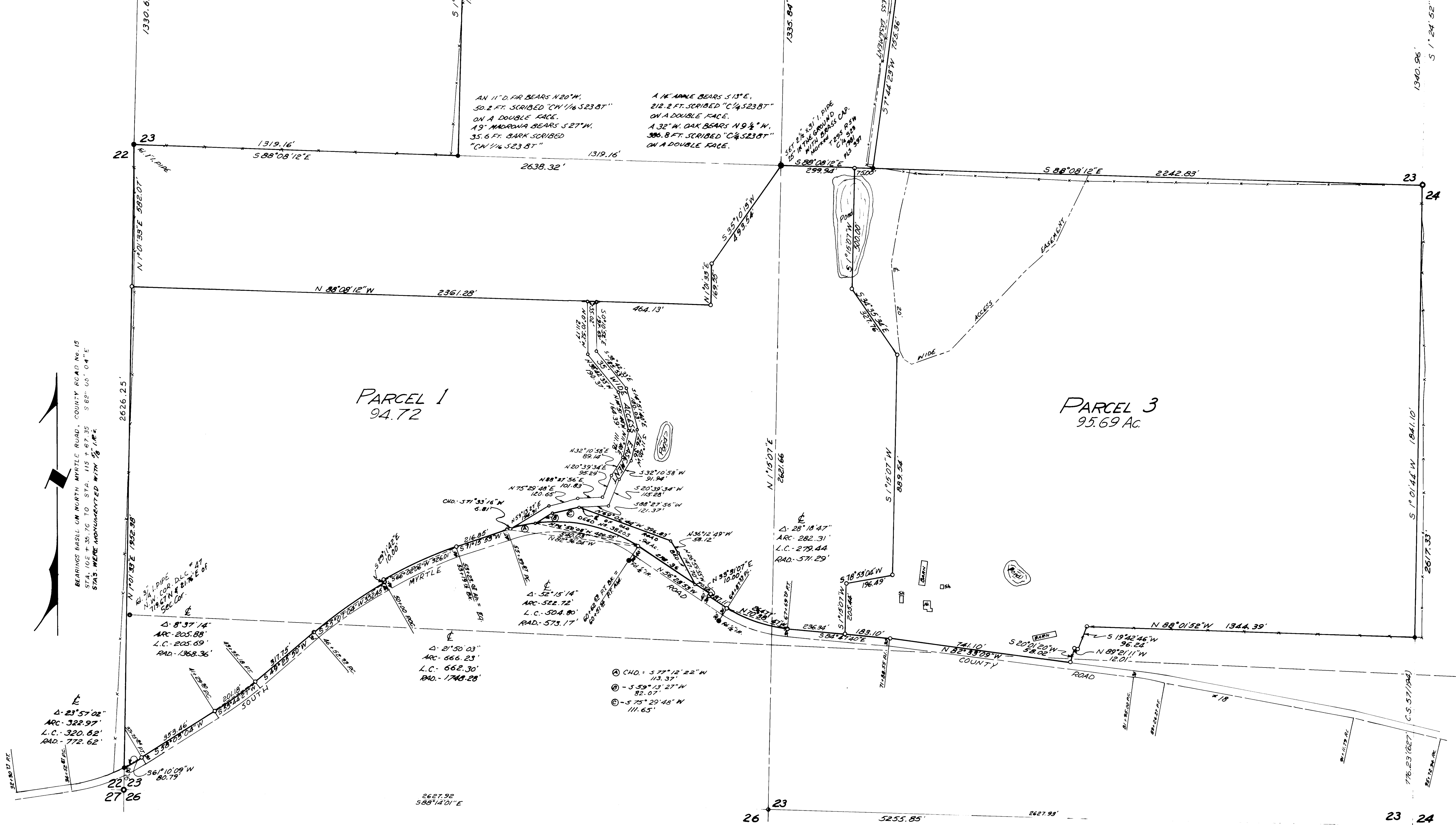
BEARINGS BASED ON NORTH MYRTLE ROAD, COUNTY ROAD NO. 15
 STA. 10.5 + 36.76 TO STA. 115 + 67.35 S 82° 05' 04" E
 STAS. WERE MONUMENTED WITH 1/2" IR. P.

PARCEL 1
 94.72

PARCEL 3
 95.69 AC.

AN 11" D. FIR BEARS N 20° W,
 50.2 FT. SCRIBED "CN 1/16 S 23 87"
 ON A DOUBLE FACE.
 A 19" MADRONA BEARS S 27° W,
 35.6 FT. BARK SCRIBED
 "CN 1/16 S 23 87"

A 14" APPLE BEARS S 13° E,
 212.2 FT. SCRIBED "C 1/4 S 23 87"
 ON A DOUBLE FACE.
 A 32" W. OAK BEARS N 9 1/2° W,
 306.8 FT. SCRIBED "C 1/4 S 23 87"
 ON A DOUBLE FACE.



- ① CHD. - 577° 12' 22" W
113.37'
- ② - 559° 13' 27" W
82.07'
- ③ - 575° 29' 48" W
111.65'