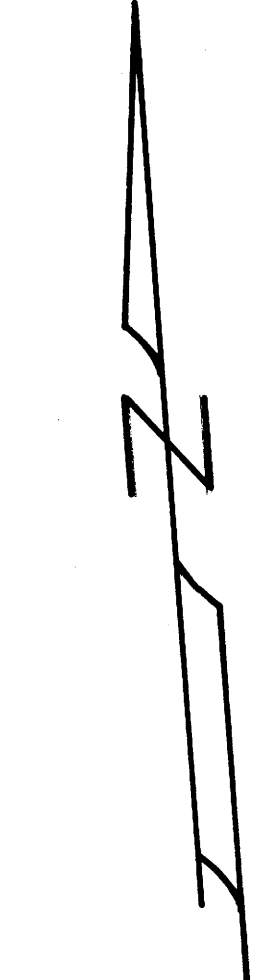


INVESTIGATION MEASUREMENTS  
 IN  
 T.27S., R.6W., SECS. 1, 11 & 12  
 FOR  
 DISTRICT ATTORNEY

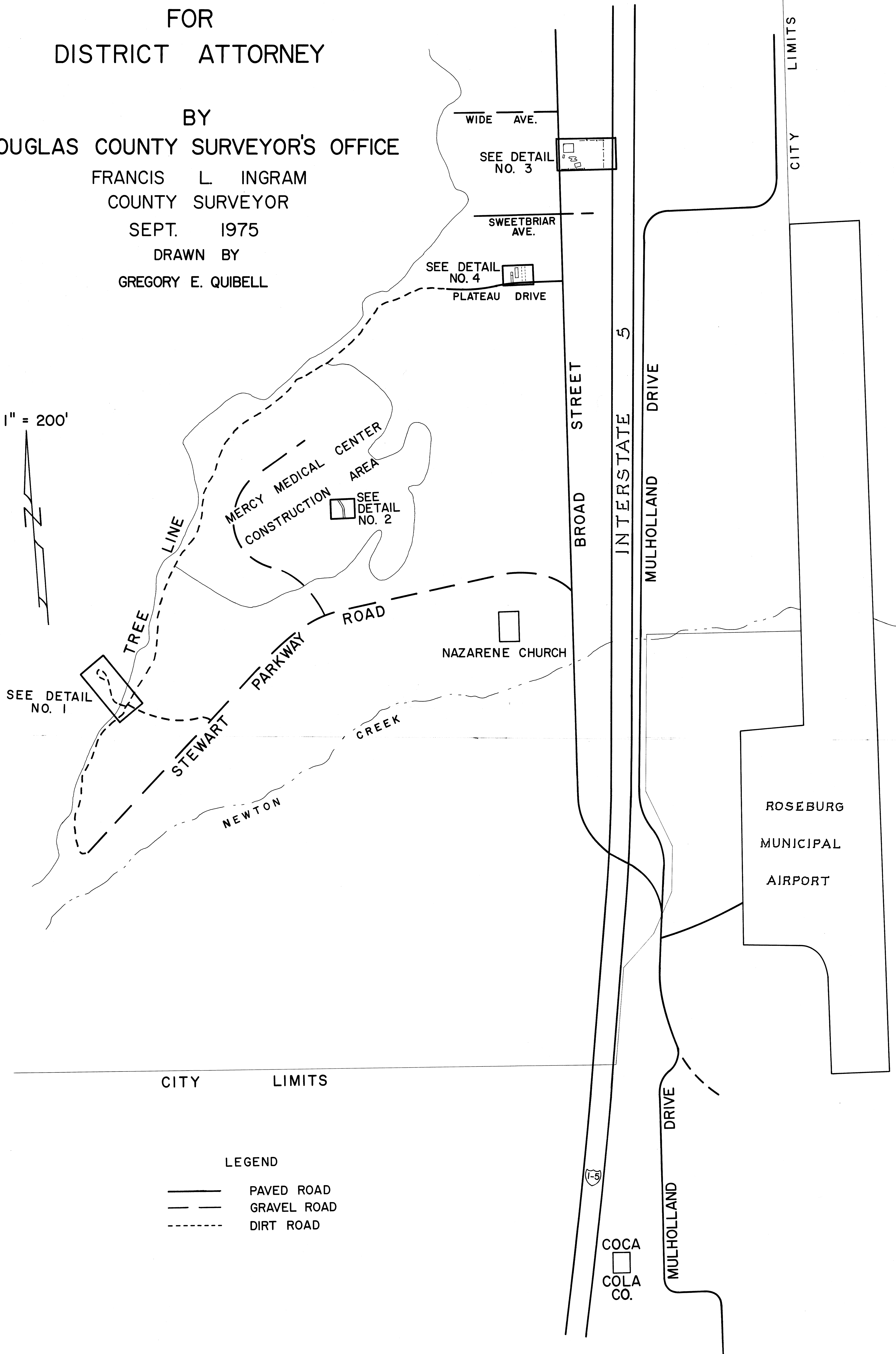
FILED  
 RECEIVED  
 FEB 23 1976  
 COUNTY SURVEYOR  
 DOUGLAS COUNTY, ORE.

BY  
 DOUGLAS COUNTY SURVEYOR'S OFFICE  
 FRANCIS L. INGRAM  
 COUNTY SURVEYOR  
 SEPT. 1975  
 DRAWN BY  
 GREGORY E. QUIBELL

1" = 200'



SEE DETAIL NO. 1



LEGEND  
 ——— PAVED ROAD  
 - - - - GRAVEL ROAD  
 ······ DIRT ROAD

COCA  
 COLA  
 CO.