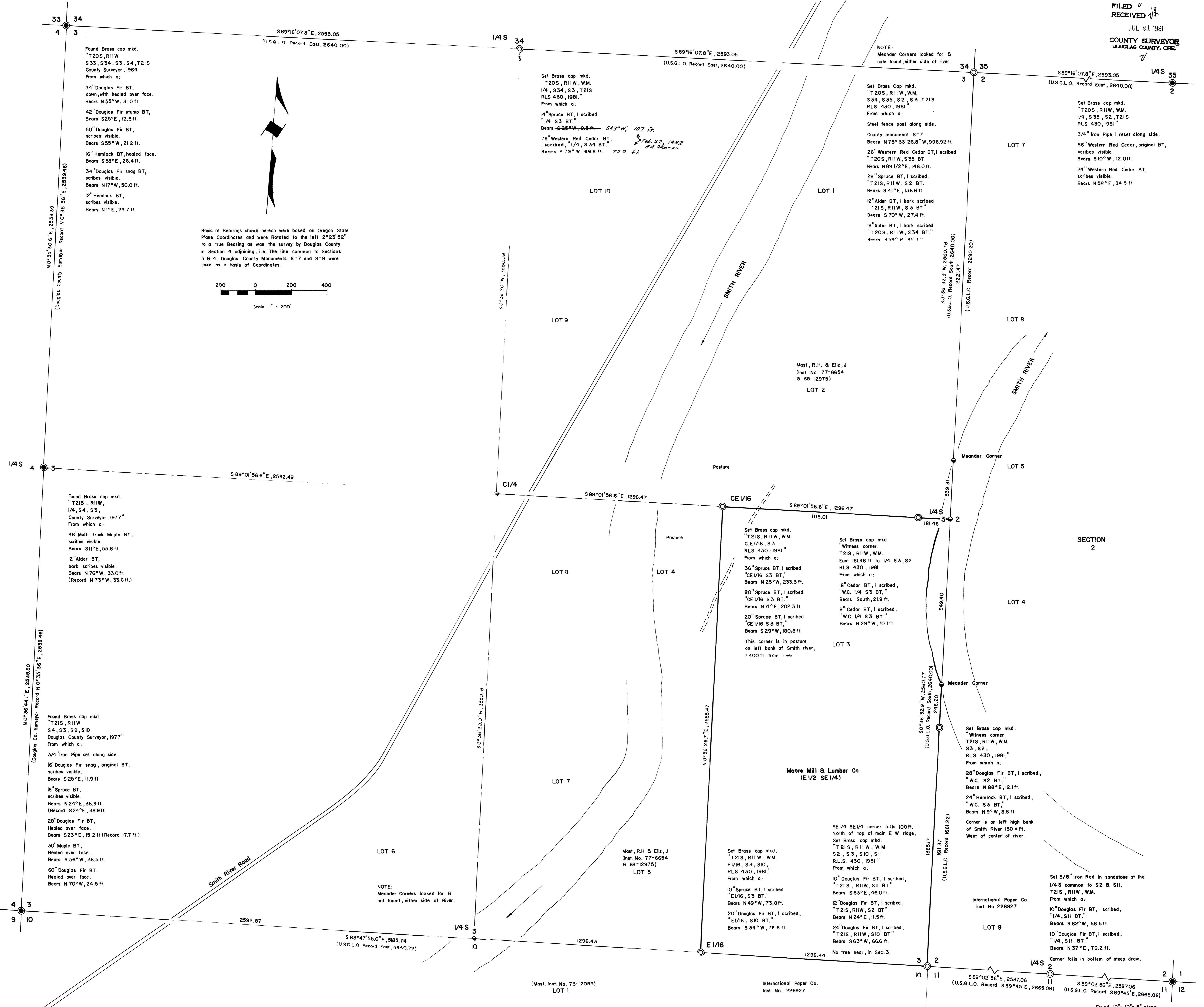


FILED
RECEIVED
JUL 21 1981
COUNTY SURVEYOR
DOUGLAS COUNTY, OREGON



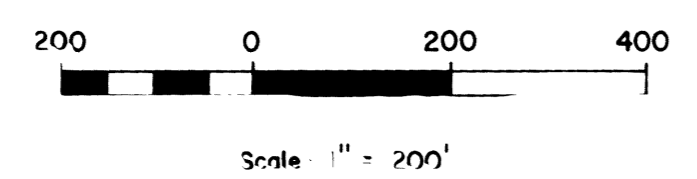
Found Brass cap mtd.
T20S, R11W
S33, S34, S3, S4, T21S
County Surveyor, 1964
From which a:
54" Douglas Fir BT,
down, with healed over face.
Bears N55°W, 31.0 ft.
42" Douglas Fir stump BT,
Bears S25°E, 12.8 ft.
50" Douglas Fir BT,
scribes visible.
Bears S55°W, 21.2 ft.
16" Hemlock BT, healed face.
Bears S58°E, 26.4 ft.
34" Douglas Fir snag BT,
scribes visible.
Bears N17°W, 50.0 ft.
12" Hemlock BT,
scribes visible.
Bears N1°E, 29.7 ft.

Set Brass cap mtd.
T20S, R11W, W.M.
1/4, S34, S3, T21S
RLS 430, 1981.
From which a:
4" Spruce BT, 1 scribed.
1/4 S3 BT.
Bears S26°W, 8.3 ft. S43°W, 102 ft.
76" Western Red Cedar BT,
scribed, 1/4 S34 BT.
Bears N79°W, 40.8 ft. 72.0 ft.

Set Brass Cap mtd.
T20S, R11W, W.M.
S34, S35, S2, S3, T21S
RLS 430, 1981.
From which a:
Steel fence post along side.
County monument S-7
Bears N75°33'26.8"W, 996.92 ft.
26" Western Red Cedar BT, 1 scribed
T20S, R11W, S35 BT.
Bears N89 1/2°E, 146.0 ft.
28" Spruce BT, 1 scribed.
T21S, R11W, S2 BT.
Bears S41°E, 136.6 ft.
2" Alder BT, 1 bark scribed
T21S, R11W, S3 BT.
Bears S70°W, 27.4 ft.
8" Alder BT, 1 bark scribed
T20S, R11W, S34 BT.
Bears N59°W, 99.3 ft.

Set Brass cap mtd.
T20S, R11W, W.M.
1/4, S35, S2, T21S
RLS 430, 1981.
From which a:
3/4" Iron Pipe reset along side.
56" Western Red Cedar, original BT,
scribes visible.
Bears S10°W, 12.0 ft.
24" Western Red Cedar BT,
scribes visible.
Bears N58°E, 34.5 ft.

Basis of Bearings shown hereon were based on Oregon State
Plane Coordinates and were Rotated to the left 2°23'52"
to a true Bearing as was the survey by Douglas County
in Section 4 adjoining, i.e. The line common to Sections
3 & 4. Douglas County Monuments S-7 and S-8 were
used as a basis of Coordinates.



Found Brass cap mtd.
T21S, R11W,
1/4, S4, S3,
County Surveyor, 1977.
From which a:
48" Multi-trunk Maple BT,
scribes visible.
Bears S11°E, 55.6 ft.
12" Alder BT,
bark scribes visible.
Bears N76°W, 33.0 ft.
(Record N73°W, 33.6 ft.)

Set Brass cap mtd.
T21S, R11W, W.M.
C, E1/6, S3
RLS 430, 1981.
From which a:
36" Spruce BT, 1 scribed
CE1/6 S3 BT.
Bears N25°W, 233.3 ft.
20" Spruce BT, 1 scribed
CE1/6 S3 BT.
Bears N71°E, 202.3 ft.
20" Spruce BT, 1 scribed
CE1/6 S3 BT.
Bears S29°W, 180.8 ft.
This corner is in pasture
+ 400 ft. from river.

Set Brass cap mtd.
Witness corner,
T21S, R11W, W.M.
East 181.46 ft. to 1/4 S3, S2
RLS 430, 1981.
From which a:
16" Cedar BT, 1 scribed,
"WC, 1/4 S3 BT."
Bears South, 21.9 ft.
8" Cedar BT, 1 scribed,
"WC, 1/4 S3 BT."
Bears N29°W, 10.1 ft.

Set Brass cap mtd.
Witness corner,
T21S, R11W, W.M.
S3, S2,
RLS 430, 1981.
From which a:
28" Douglas Fir BT, 1 scribed,
"WC, S2 BT."
Bears N88°E, 12.1 ft.
24" Hemlock BT, 1 scribed,
"WC, S3 BT."
Bears N9°W, 8.8 ft.
Corner is on left high bank of
Smith River 150 ft.
West of center of river.

Set 5/8" Iron Rod in sandstone at the
1/4 S common to S2 & S11,
T21S, R11W, W.M.
From which a:
10" Douglas Fir BT, 1 scribed,
1/4, S11 BT.
Bears S62°W, 58.5 ft.
10" Douglas Fir BT, 1 scribed,
1/4, S11 BT.
Bears N37°E, 79.2 ft.
Corner falls in bottom of steep draw.

NARRATIVE
The primary purpose of the survey was to set
property corners and define property lines of the E1/2 SE1/4
of Section 3 for Moore Mill & Lumber Co. Since all the original
U.S.G.L.O. corners were gone from Section 3 except on the West Line
it was necessary to survey and proportion the lost corners in as
shown on this plat. No evidence of the lost U.S.G.L.O. corners
were found, although extensive searches were made.
A Franke 20" theodolite and a Mac 1" EDM were used for
control work. A Dietzen 30" Transit and a 300' steel chain
were used on part of the E1/2 SE1/4 due to rain.

LEGEND

Corner found	●
Corner set	○
Corner Computed, Not Set	◐
Line Traversed and Posted	—+—+—+—
Line Traversed	—+—+—
Line computed, Not Run	—+—
Paved Road	====
Rock Road	-----

**SURVEY IN SECTIONS 2, 3, 10 & 11,
T2S, R11W, W.M., DOUGLAS COUNTY,
OREGON**

For: Moore Mill & Lumber Co.
PO. Box 277
Bandon, Oregon 97411
By: Shaner Engineering, Inc.
PO. Box 1430
Roseburg, Oregon 97470

March — July, 1981

