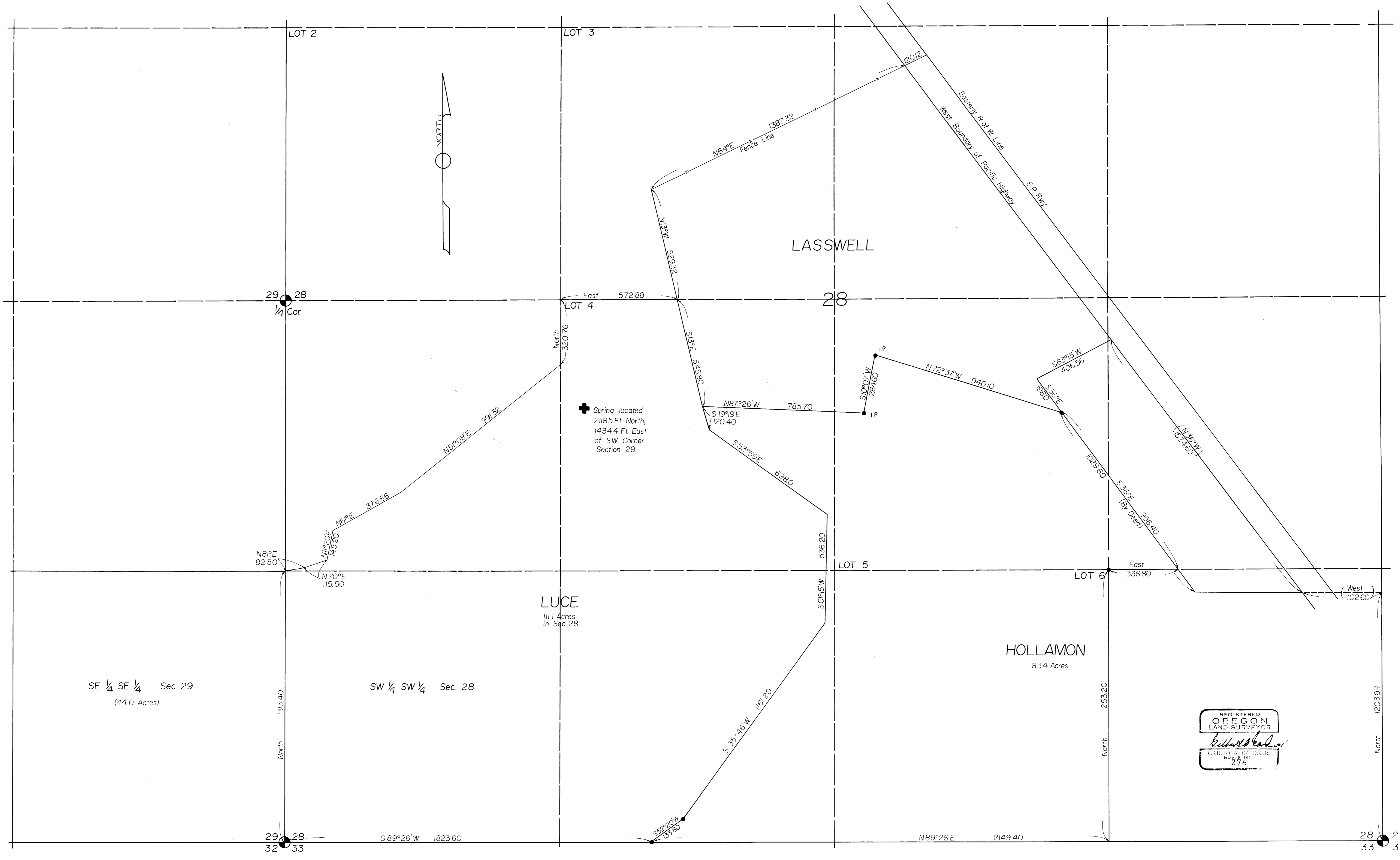


# SURVEY FOR SIDNEY S. LASSWELL IN SECTION 28; TWP 22S; R5W, W.M. SCALE 1"=200 Ft. MAY, 1953

FILED *BS*  
RECORDED *1/18*  
MAY 15 1953  
COUNTY SURVEYOR  
DEPARTMENT, ORE.  
*BS*

NOTE  
THIS MYLAR WAS PREPARED BY VALLEY AERIAL MAPPING SERVICES INC, ROSEBURG, DEC. 1980.  
IT WAS REDRAFTED FROM A PRINT SUPPLIED BY THE LAND OWNER, WHICH IS FILED IN C.S. 58/248.



17-18-19  
10-11-12  
13-14-15  
16-17-18  
19-20-21  
22-23-24  
25-26-27  
28-29-30  
31-32-33  
34-35-36  
37-38-39  
40-41-42  
43-44-45  
46-47-48  
49-50-51  
52-53-54  
55-56-57  
58-59-60  
61-62-63  
64-65-66  
67-68-69  
70-71-72  
73-74-75  
76-77-78  
79-80-81  
82-83-84  
85-86-87  
88-89-90  
91-92-93  
94-95-96  
97-98-99  
100