

N89°33'14.4"E, 208.13(63.438 m.)  
(Record East, 204.60)

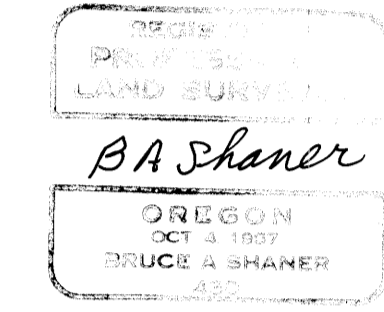
N1/4  
Sec.16 only  
S1/4  
Sec.9 only

Found 16"x10"x6" Basalt stone  
Original Bt. mkd.  
1/4"  
From which a:  
12" Douglas Fir, original Bt.  
Down & Rotted, Partial Scribes visible  
Bears S9° W, 11.9 ft.  
Set Brass cap in corner position mkd.  
T30S, R2W, W.M.  
1/4S, S16 only  
RLS 430, 1980  
From which a:  
8" Douglas Fir, 1 scribed  
1/4 S16 Bt.  
Bears S8° W, 25.1 ft.  
19" Cedar, 1 scribed  
1/4 S16 Bt.  
Bears S53° E, 37.9 ft.  
1 reset stone alongside  
Brass cap.

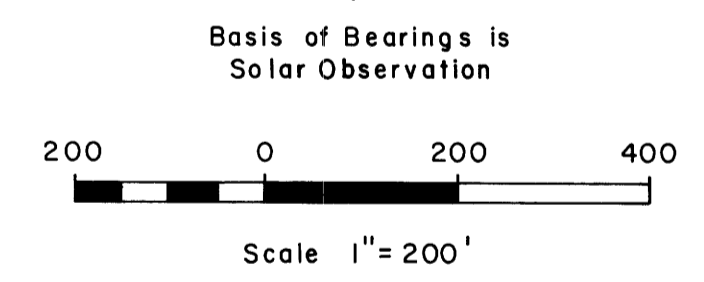
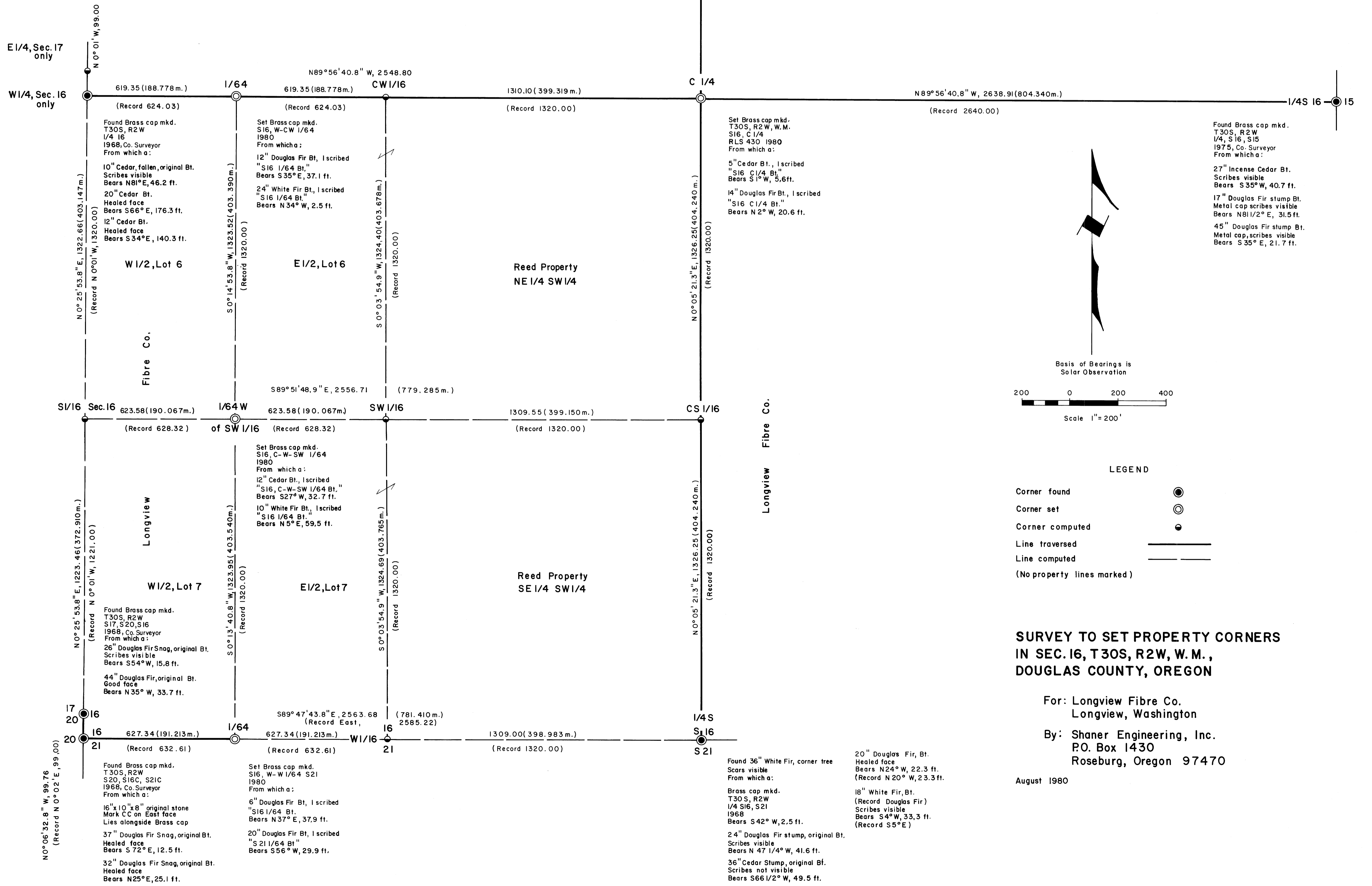
Found Brass cap mkd.  
T30S, R2W  
1/4 S9  
1968, Co. Surveyor  
From which a:  
15" Cedar Bt.  
Scribes visible  
Bears N83° W, 18.4 ft.  
9" Cedar, 1 scribed  
1/4 S9 Bt.  
Bears N15° W, 31.7 ft.  
32" Douglas Fir, original Bt.  
New uprooted stump, bears  
N32° E, 22.4 ft.

NARRATIVE

Section 16 was subdivided with a Franke 20" Theodolite and a Mac I EDM, in August 1980. Corners were set as shown but property lines were not marked. Triangulation was the basis of much of the work.



Longview Fibre Co.



- LEGEND
- Corner found (circle with dot)
  - Corner set (circle with dot)
  - Corner computed (circle with dot)
  - Line traversed (solid line)
  - Line computed (dashed line)
  - (No property lines marked)

**SURVEY TO SET PROPERTY CORNERS  
IN SEC. 16, T30S, R2W, W.M.,  
DOUGLAS COUNTY, OREGON**

For: Longview Fibre Co.  
Longview, Washington  
By: Shaner Engineering, Inc.  
P.O. Box 1430  
Roseburg, Oregon 97470

August 1980

Found 36" White Fir, corner tree  
Scars visible  
From which a:  
Brass cap mkd.  
T30S, R2W  
1/4 S16, S21  
1968  
Bears S42° W, 2.5 ft.  
24" Douglas Fir stump, original Bt.  
Scribes visible  
Bears N 47 1/4° W, 41.6 ft.  
36" Cedar Stump, original Bt.  
Scribes not visible  
Bears S66 1/2° W, 49.5 ft.

20" Douglas Fir, Bt.  
Healed face  
Bears N24° W, 22.3 ft.  
(Record N 20° W, 23.3 ft.)  
18" White Fir, Bt.  
(Record Douglas Fir)  
Scribes visible  
Bears S4° W, 33.3 ft.  
(Record S5° E)

Found Brass cap mkd.  
T30S, R2W  
S20, S16C, S21C  
1968, Co. Surveyor  
From which a:  
16" 10" 6" original stone  
Mark CC on East face  
Lies alongside Brass cap  
37" Douglas Fir Snag, original Bt.  
Healed face  
Bears S 72° E, 12.5 ft.  
32" Douglas Fir Snag, original Bt.  
Healed face  
Bears N25° E, 25.1 ft.

Set Brass cap mkd.  
S16, W-W/64 S21  
1980  
From which a:  
6" Douglas Fir Bt., 1 scribed  
1/4 S16 Bt.  
Bears N37° E, 37.9 ft.  
20" Douglas Fir Bt., 1 scribed  
1/4 S21 Bt.  
Bears S56° W, 29.9 ft.