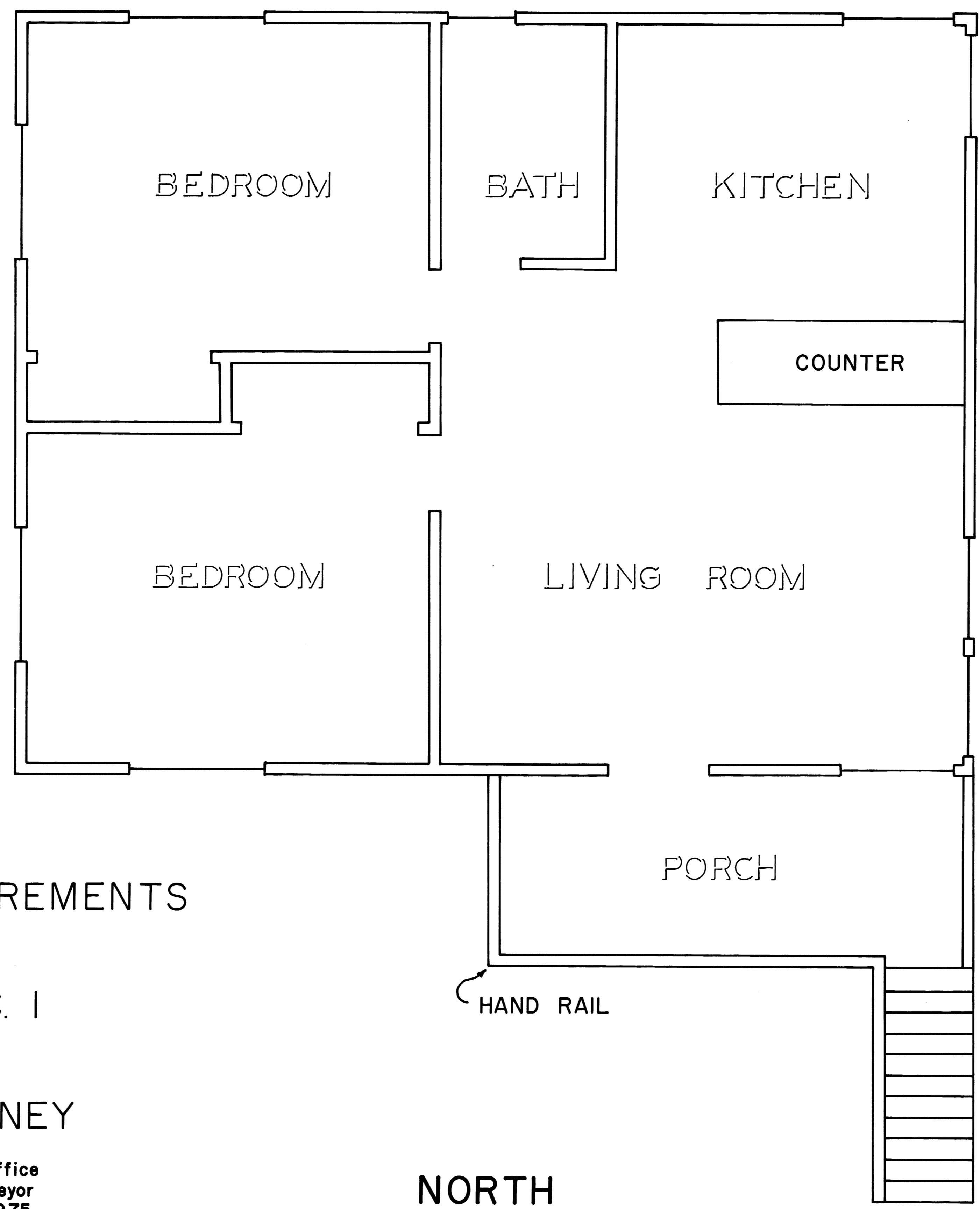


FILED
RECEIVED 23
DEC 24 1975
COUNTY SURVEYOR
DOUGLAS COUNTY, ORE

57/42
RM 3-3

▲
SOUTH



◀ EAST

WEST ▶

INVESTIGATION MEASUREMENTS
IN
T. 27 S., R. 7 W., SEC. 1
FOR
DISTRICT ATTORNEY

Surveyed by Douglas County Surveyor's Office
Francis L. Ingram County Surveyor
Scale 1/2" = 1' Dec. 1975

Drawn by
Gregory E. Quibell

NORTH
▽

CS file 57/42
RM 3-3