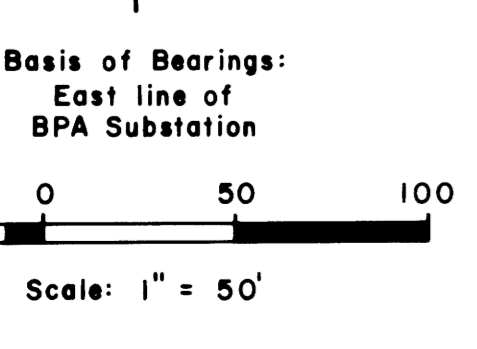
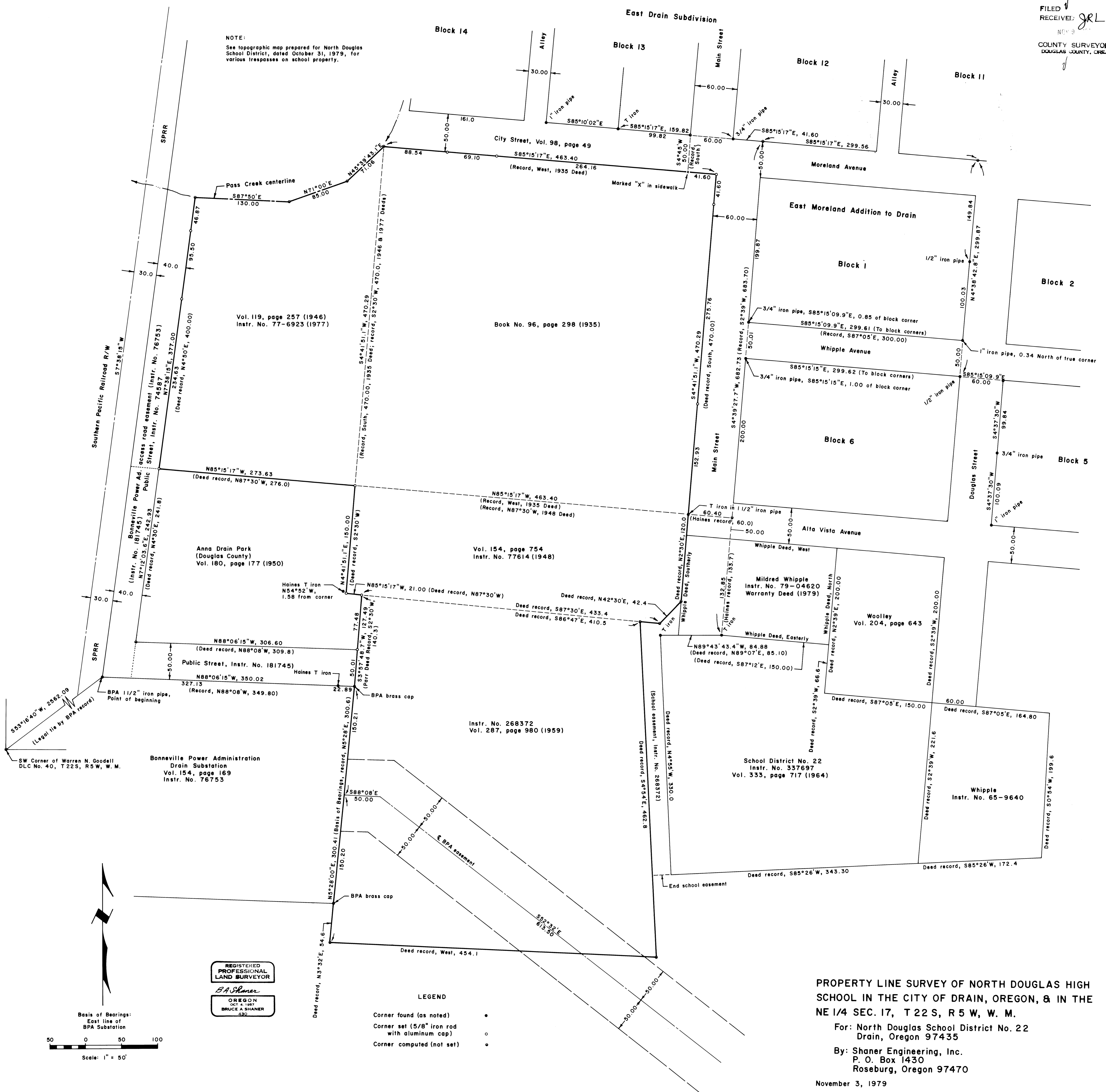


NOTE: See topographic map prepared for North Douglas School District, dated October 31, 1979, for various trespasses on school property.



REGISTERED PROFESSIONAL LAND SURVEYOR
B.A. Shaner
OREGON
OCT 4, 1957
BRUCE A. SHANER
432

LEGEND
Corner found (as noted) •
Corner set (5/8" iron rod with aluminum cap) ○
Corner computed (not set) ◦

PROPERTY LINE SURVEY OF NORTH DOUGLAS HIGH SCHOOL IN THE CITY OF DRAIN, OREGON, & IN THE NE 1/4 SEC. 17, T 22 S, R 5 W, W. M.
For: North Douglas School District No. 22
Drain, Oregon 97435
By: Shaner Engineering, Inc.
P. O. Box 1430
Roseburg, Oregon 97470
November 3, 1979