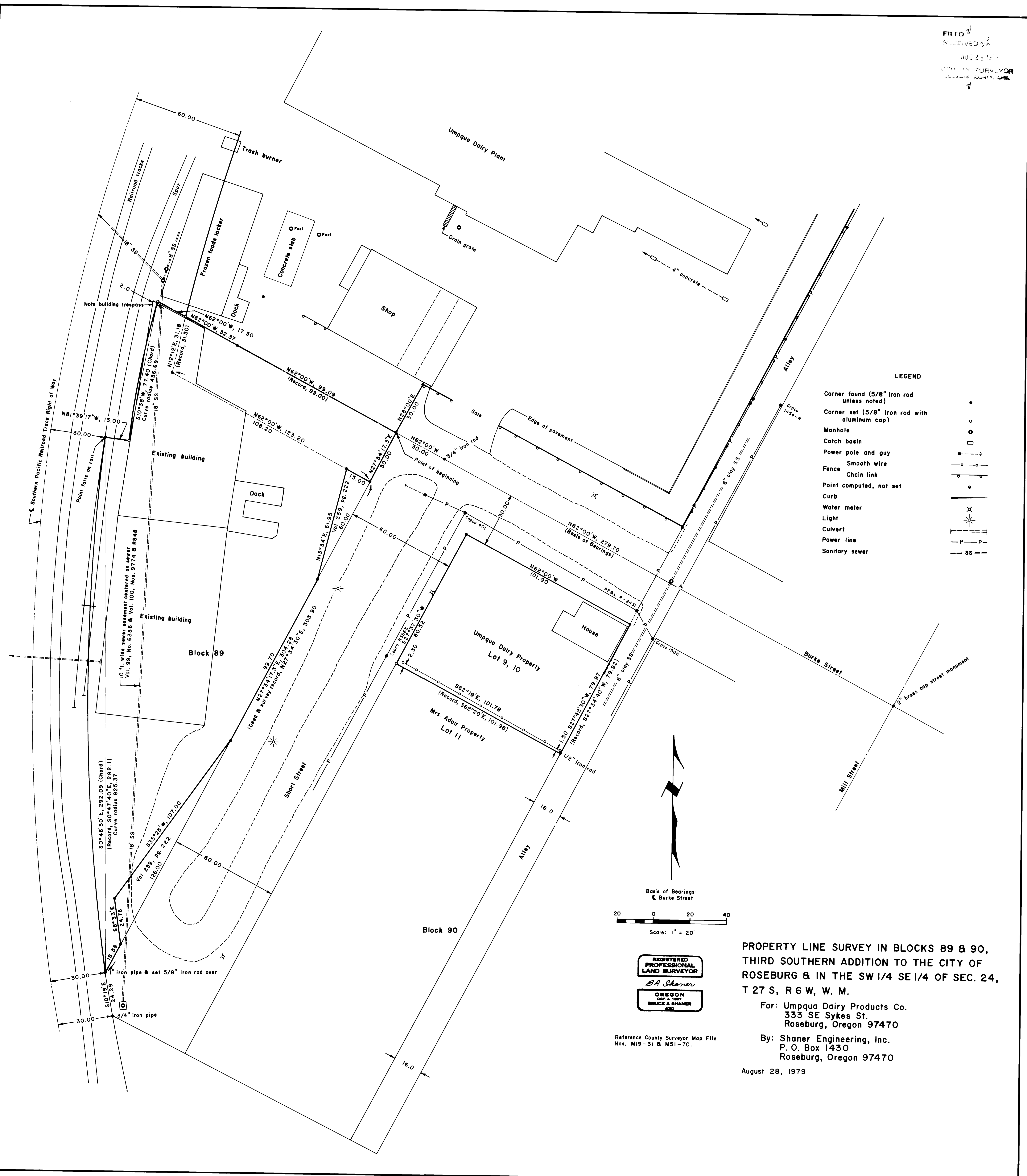


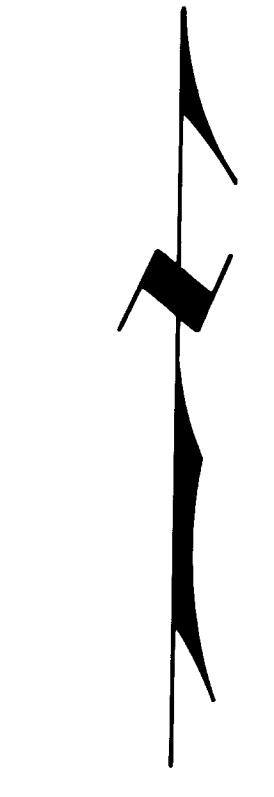
FILED
 RECEIVED
 AUG 28 1979
 COUNTY SURVEYOR
 J

MAP FILE M13-21



LEGEND

- Corner found (5/8" iron rod unless noted) •
- Corner set (5/8" iron rod with aluminum cap) ○
- Manhole □
- Catch basin □
- Power pole and guy —|—|—|
- Smooth wire —○—○—
- Fence —|—|—|
- Chain link —|—|—|
- Point computed, not set •
- Curb —|—|—|
- Water meter X
- Light X
- Culvert —|—|—|
- Power line —P—P—
- Sanitary sewer —SS—SS—



Basis of Bearings:
 Burke Street

20 0 20 40

Scale: 1" = 20'

REGISTERED
 PROFESSIONAL
 LAND SURVEYOR
 BA Shaner
 OREGON
 OCT 4 1967
 BRUCE A SHANER
 L.S.D.

Reference County Surveyor Map File
 Nos. M19-31 & M51-70.

PROPERTY LINE SURVEY IN BLOCKS 89 & 90,
 THIRD SOUTHERN ADDITION TO THE CITY OF
 ROSEBURG & IN THE SW 1/4 SE 1/4 OF SEC. 24,
 T 27 S, R 6 W, W. M.

For: Umpqua Dairy Products Co.
 333 SE Sykes St.
 Roseburg, Oregon 97470

By: Shaner Engineering, Inc.
 P. O. Box 1430
 Roseburg, Oregon 97470

August 28, 1979

15-548