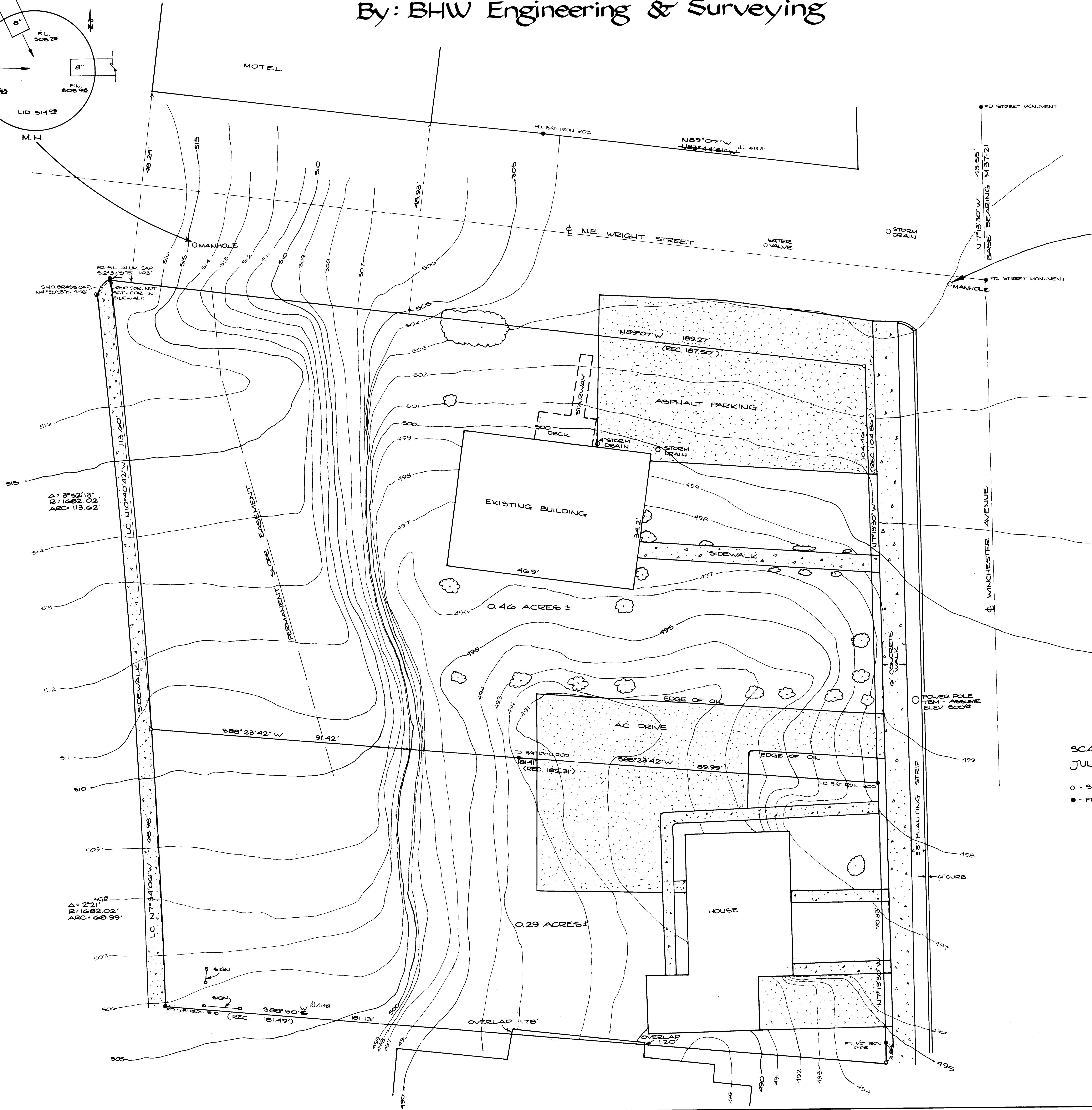
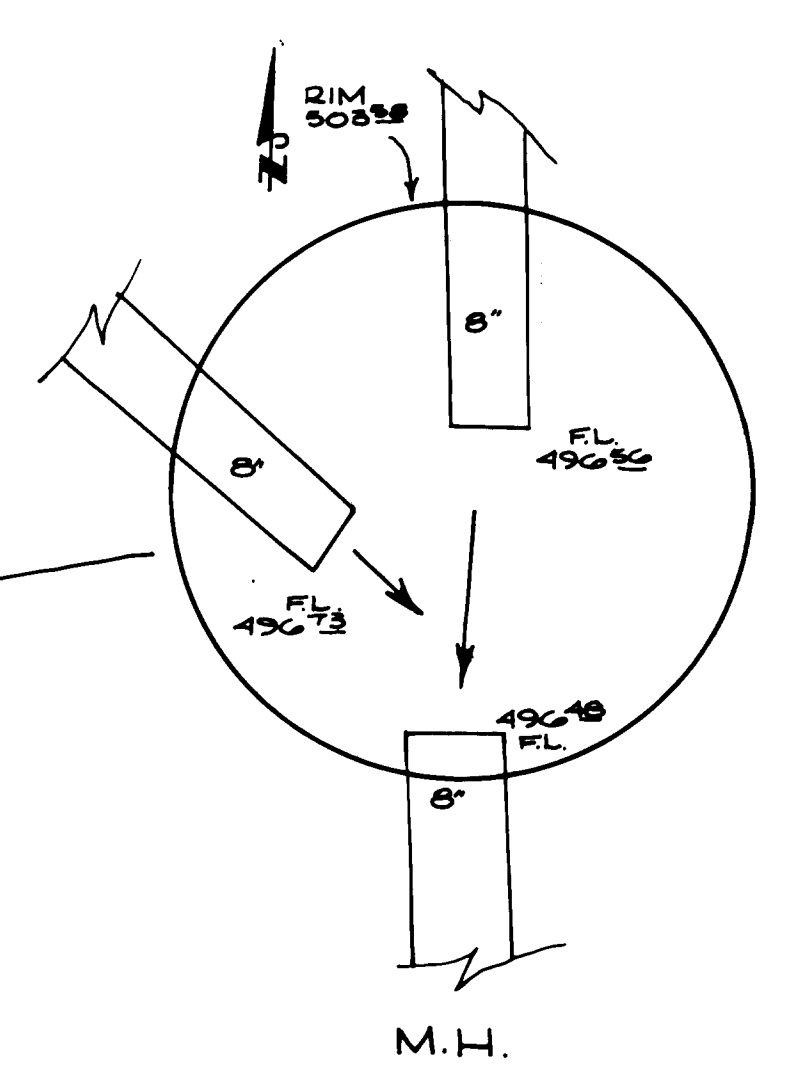
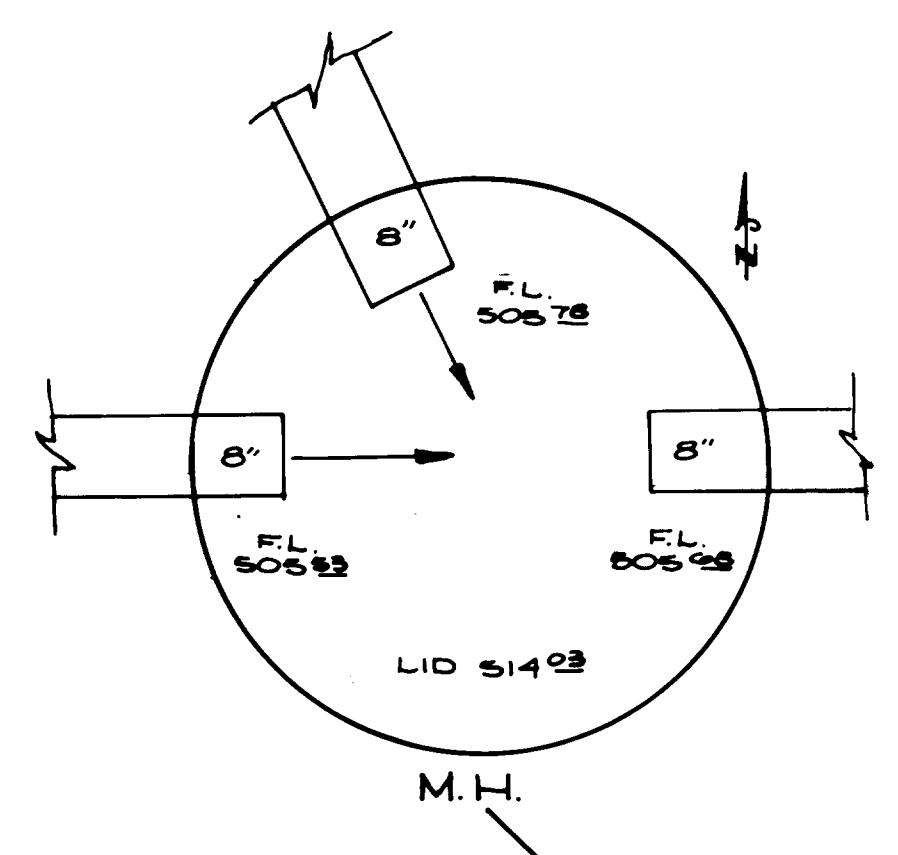


SURVEY IN LOT 8, BLOCK 6, "NORTH PARK ADDITION TO ROSEBURG," SECTION 18, T27S, R5W, W.M.

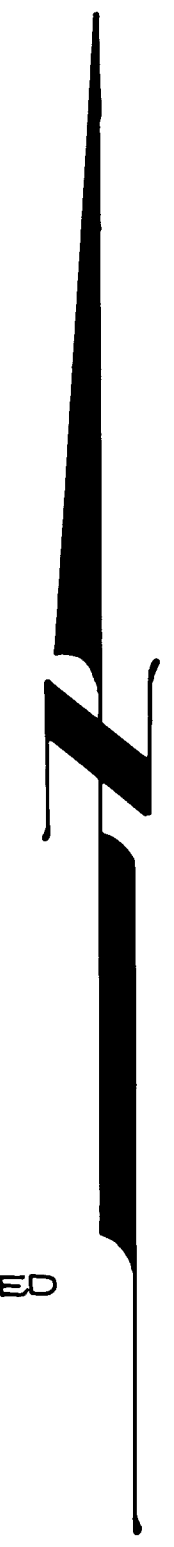
AUG 21 1979
COUNTY SURVEYOR
DOUGLAS COUNTY, OR

For: Walter Watkins
By: BHW Engineering & Surveying



REGISTERED
PROFESSIONAL
LAND SURVEYOR
Ronald A. Quimby
JULY 14, 1978
RONALD A. QUIMBY
1854

SCALE: 1" = 10'
JULY 1979
○ - SET 5/8" IRON ROD
● - FD. MONUMENT AS NOTED



KM 3-50