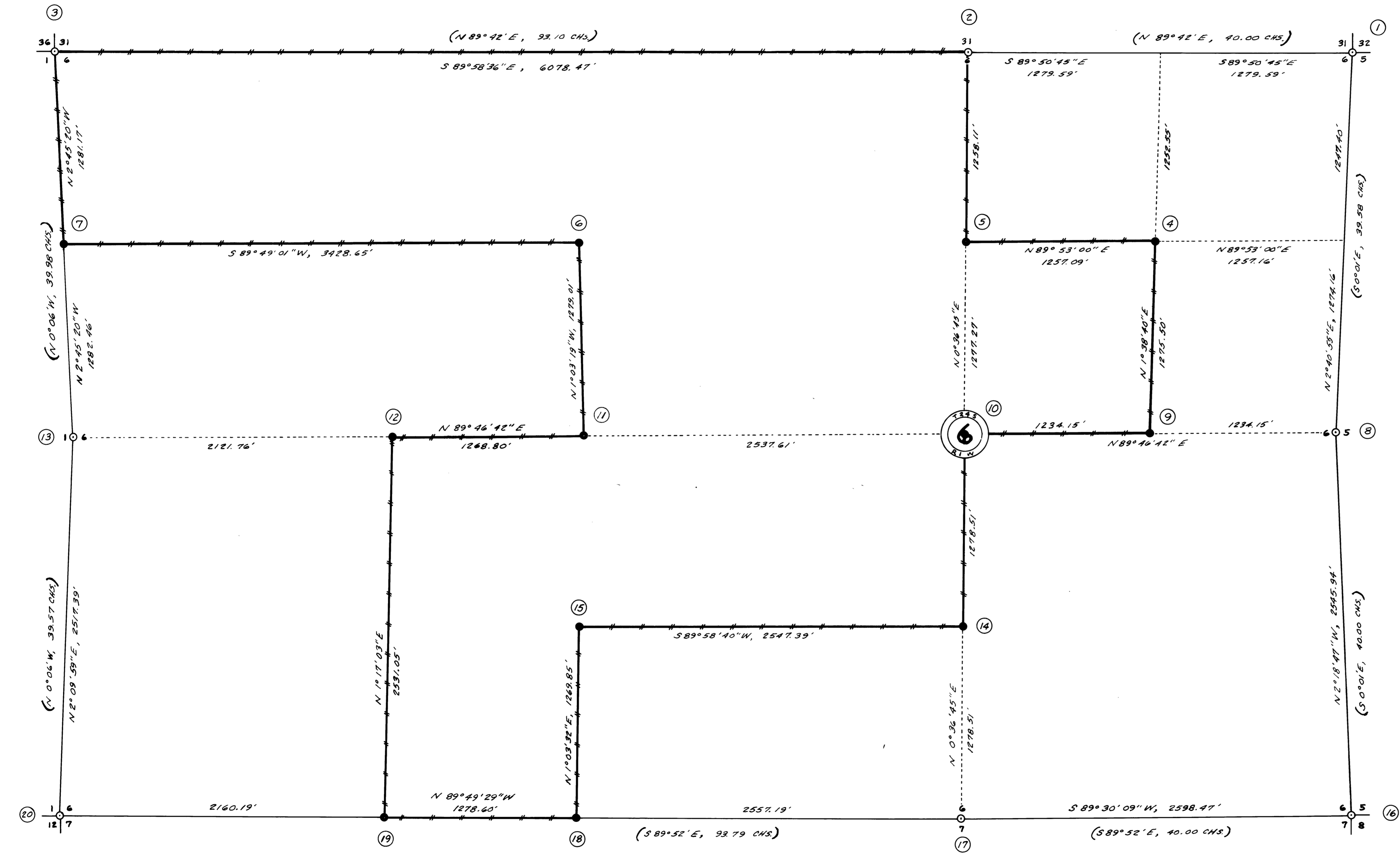
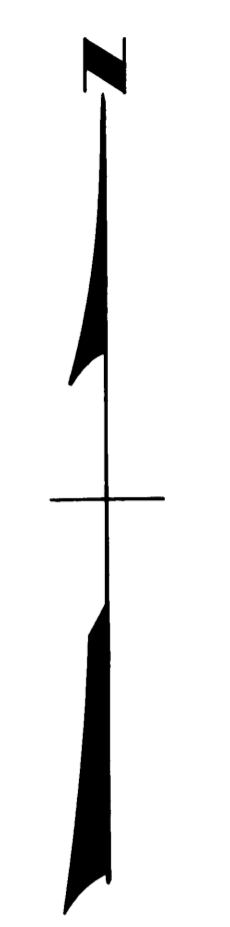


FL. 27  
REF. 27

REGISTERED  
PROFESSIONAL  
LAND SURVEYOR  
Donald L. Paul  
1975



- GOVT. CORNERS FOUND AND USED FOR CONTROL
- CORNERS SET THIS SURVEY
- +— LINES BLAZED
- ( ) RECORD BRG. & DIST.

- ① FOUND STONE - SET 1"X30" I.P.  
22" FIR (CLOSED FACE), S29½E, 29.0'  
40" FIR (CLOSED FACE), S33½W, 27.7'  
20" FIR (CLOSED FACE), N46½W, 13.2'  
16" CEDAR (CLOSED FACE), N21E, 36.3'
- ② FOUND 7" HEM. SNAG (NOT FIR) DOWNED, S35W, 5.3' - OPENED, SCRIBING VISIBLE  
SET 1"X36" REBAR IN MOUND OF STONE AND SCRIBED 2 NEW B.T.  
12" FIR, N28E, 29.1' (¼ 531 BT)  
14" HEM., S17W, 22.1' (¼ 56 BT)
- ③ FOUND 2½" U.S.B.L.M. CADASTRAL SURVEY I.P. WITH B.C. DATED 1964  
18" W. FIR, N36½E, 30.4' - NEW B.T.  
30" HEM., S40W, 19.3'  
32" W. FIR SNAG, N66W, 21.4'
- ④ SET 1"X30" I.P. AND SCRIBED 2 B.T. (NE ¼ 56 BT)  
22" FIR, N5E, 12.5'  
16" FIR, S59W, 3.3'
- ⑤ SET 1"X36" I.P. AND SCRIBED 2 B.T. (CN ¼ 56 BT)  
12" HEM., N21E, 23.8'  
9" HEM., S45E, 2.3'
- ⑥ SET ¾"X¾" REBAR AND SCRIBED 2 B.T. (¼ 56 BT)  
20" HEM., N35E, 3.9'  
42" FIR, S30W, 13.0'
- ⑦ SET 1"X36" REBAR AND SCRIBED 2 B.T.  
14" SILVER FIR (¼ 56 BT), N7E, 13.7'  
18" FIR (¼ 51 BT), N81W, 1.5'
- ⑧ FOUND 10"X10"X12" STONE MKD. ¼"  
SET ¾"X30" I.P.  
20" CEDAR STUB (SCRIBE VISIBLE), S80W, 9.9'  
28" FIR (CLOSED FACE), S30E, 12.5' - BEG. IS NOT S40E AS IN NOTES

- ⑱ SET 1"X36" I.P. AND SCRIBED 2 B.T.  
23" FIR (¼ 57 BT), S28E, 9.0'  
30" FIR (¼ 56 BT), N9W, 13.9'
- ⑲ SET ¾"X¾" REBAR AND SCRIBED 2 B.T.  
19" SILVER FIR (¼ 57 BT), S20E, 7.2'  
11" SILVER FIR (¼ 56 BT), N34W, 40.2'
- ⑳ FOUND 1½" I.P. WITH DOUGLAS CO. B.C. DATED 1969  
28" FIR (CLOSED FACE), N15E, 54.1'  
8" S. PINE (NEW B.T. - SCRIBE VISIBLE), N15E, 5.0'  
14" FIR (NEW B.T. - SCRIBE VISIBLE), S72E, 26.7'  
18" S. PINE SNAG (OPENED - SCRIBE VISIBLE), S42W, 5.0'  
15" FIR (NEW B.T. - SCRIBE VISIBLE), S70W, 24.0'  
17" S. PINE (NEW B.T. - SCRIBE VISIBLE), N27W, 4.0'
- ⑭ SET ¾"X30" REBAR AND SCRIBED 2 B.T. (¼ 56 BT)  
19" FIR, S40E, 30.5'  
10" W. PINE, N75W, 23.2'
- ⑮ SET 1"X30" I.P. AND SCRIBED 2 B.T. (¼ 56 BT)  
48" FIR, N64E, 7.2'  
32" FIR, S19W, 16.2'
- ⑯ FOUND 2½" U.S.B.L.M. CADASTRAL SURVEY I.P. WITH B.C. DATED 1963  
18" FIR (OPENED - SCRIBE VISIBLE), N38E, 2.6'  
8" FIR SNAG (SCRIBE VISIBLE), S10E, 18.3'  
10" FIR (OPENED - SCRIBE VISIBLE), S30W, 15.6'  
10" FIR (NEW B.T. - SCRIBE VISIBLE), S33W, 17.9'  
18" FIR (NEW B.T. - SCRIBE VISIBLE), N62W, 12.9'  
6" FIR SNAG (SCRIBE VISIBLE), N33W, 4.5'
- ⑰ FOUND 1½" I.P. WITH DOUGLAS CO. B.C. DATED 1970  
36" HEM. (SCRIBE VISIBLE), S43E, 9.2'  
15" W. FIR (NEW B.T. - SCRIBE VISIBLE), N27½E, 31.3'  
11" HEM. (NEW B.T. - SCRIBE VISIBLE), S50E, 41.8'
- ⑲ SET ¾"X30" REBAR AND SCRIBED 2 B.T. (CE ¼ 56 BT)  
10" HEM., N19E, 14.0'  
10" W. PINE, S26E, 10.4'
- ⑳ SET 1"X30" I.P. AND SCRIBED 2 B.T. (CN ¼ 56 BT)  
8" FIR, N6E, 5.3'  
34" FIR, S3W, 21.0'
- ㉑ SET ¾"X36" REBAR AND SCRIBED 2 B.T. (¼ 56 BT)  
22" HEM., N19W, 45.0'  
10" SILVER FIR, S40W, 33.5'
- ㉒ SET 1"X30" REBAR AND SCRIBED 2 B.T. (¼ 56 BT)  
14" HEM., N10E, 24.5'  
20" HEM., S40E, 5.0'
- ㉓ FOUND 1½" I.P. WITH DOUGLAS CO. B.C. DATED 1969  
48" FIR (BARK SCRIBED), N25E, 8.6'  
8" W. FIR (NEW B.T.), N54E, 28.2'  
14" W. FIR (NEW B.T.), S41W, 10.0'

**SECTION 6, T24S, R1W, W.M.**  
**DOUGLAS COUNTY, OREGON**  
for  
**WEYERHAEUSER COMPANY**  
by  
**TRIANGLE ENGINEERING CO.**  
NOVEMBER 1975  
BEARINGS BASED ON SOLAR OBSERVATION  
SCALE: 1" = 400'

NOTE: ALL NEW BEARING TREES SET BY THIS SURVEY, THE DISTANCE WAS MEASURED FROM THE CORNER TO A R.R. SPIKE DRIVEN IN THE BASE OF THE B.T.