

NO°41'34.1"W, 2651.47  
(Record, NO°40'W, 2650.56)

NO°41'05.8"W, 2649.44  
(Record, NO°40'W, 2650.56)

S0°28'18.3"E  
2646.14

S0°28'18.3"E  
2642.24

NO°13'49.6"W, 2640.84  
(Record, NO°10'W, 2640.00)

Note: Existing fence is approx. 30 ft. North of E-W line

1308.93      1308.93      2616.97

S89°56'25.5"E      S89°56'25.5"E      S89°56'25.5"E

CW1/16      C1/4      Witness Corner

Fd. brass cap mkd.  
1/4 S17, S16  
T22S, R6W 1976  
From which a:  
10" Douglas fir BT  
Scribes vis.  
Bears N73 1/2°E, 62.0 ft.  
No BT found in Sec. 17.  
The area has been clearcut.

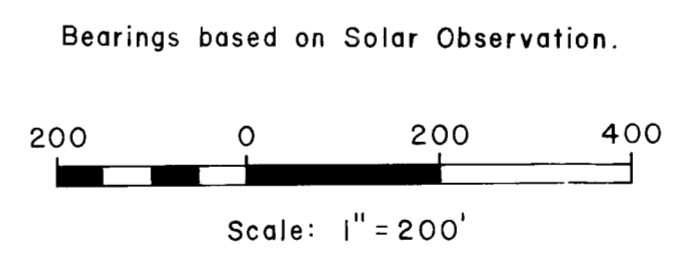
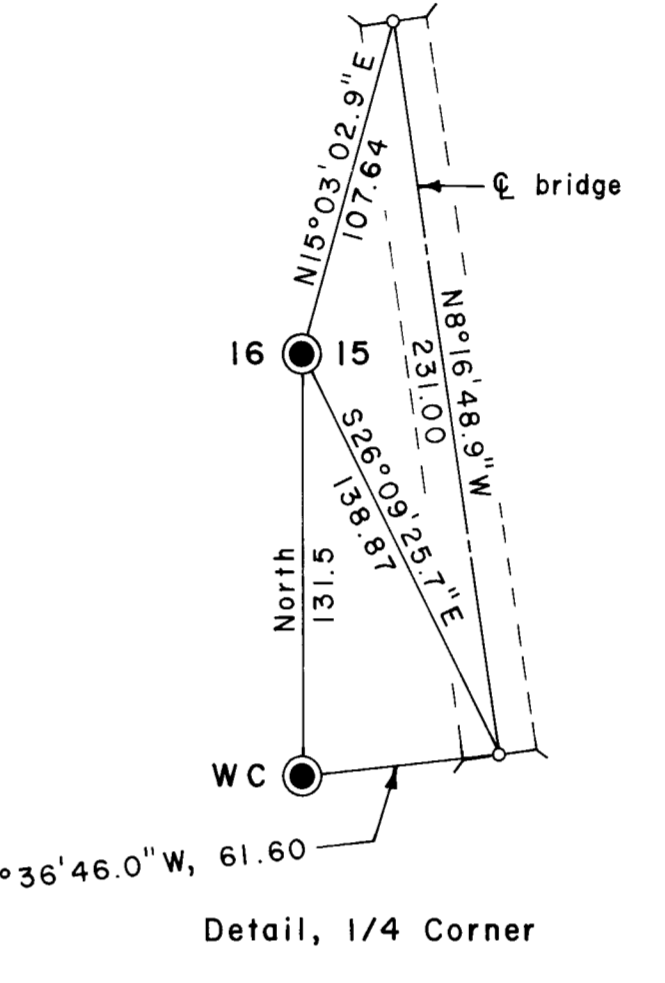
Fd. brass cap mkd.  
T22S, R6W  
S17, S16, S20, S21  
Brass cap bears S45°W,  
2.64 ft. from center of  
30" white fir which stands  
at location for corner.  
From which brass cap a:  
46" Douglas fir BT  
Face chopped out  
Bears S32°E, 47.7 ft.  
(Record, 45.5 ft.)  
32" Douglas fir original BT stump  
Bears N5°E, 16.5 ft.  
9" chinquapin BT stump  
Scribes vis.  
Bears N10°W, 25.8 ft.  
7" Douglas fir BT  
Face vis.  
Bears N50°E, 49.0 ft.  
8" Douglas fir BT  
Face vis.  
Bears S22°E, 20.5 ft.  
10" hemlock BT  
Scribes vis.  
Bears S16°W, 45.2 ft.

Set brass cap mkd.  
CW 1/16 1978  
From which a:  
38" white fir, 1 scribe  
"CW 1/16 BT"  
Bears N18°W, 7.2 ft.  
12" white fir, 1 scribe  
"CW 1/16 BT"  
Bears S41°E, 69.6 ft.

Set brass cap mkd.  
W1/16 S16, S21 1978  
From which a:  
10" cedar, 1 scribe  
"W1/16 S16 BT"  
Bears N32 1/2°E, 39.4 ft.  
16" cedar, 1 scribe  
"W1/16 S21 BT"  
Bears S59°W, 16.5 ft.

Set brass cap mkd.  
C1/4 1978  
From which a:  
28" oak, 1 scribe  
"C 1/4 BT"  
Bears N26°E, 296.3 ft.  
16" oak, 1 scribe  
"C 1/4 BT"  
Bears S85°E, 131.6 ft.  
Set steel fence post  
along side corner which  
falls in field.

Fd. brass cap mkd.  
1/4 S16, S21  
T22S, R6W, 1969  
From which a:  
36" Douglas fir BT stump  
Scribes vis.  
Bears N55 1/2°E, 3.0 ft.  
12" Douglas fir BT  
Scribes vis.  
Bears N29 1/2°W, 95.6 ft.  
(Record, N33°W, 94.6 ft.)  
8" Douglas fir BT snag  
Scribes vis.  
Bears N26 1/2°W, 70.0 ft.  
(Record, N30°W, 69.2 ft.)  
16" Douglas fir BT  
Scribes vis.  
Bears N1 1/2°W, 65.3 ft.  
(Record, N3°W)  
10" Douglas fir BT windfall  
Scribes vis.  
Bears N21°E, 65.2 ft.  
No BT found in Sec. 21.  
The area has been clearcut.



LEGEND

Corner found

Corner set

True line run and blazed

REGISTERED  
PROFESSIONAL  
LAND SURVEYOR  
*B A Shaner*  
OREGON  
OCT 4, 1997  
BRUCE A SHANER  
430

PROPERTY LINE SURVEY OF THE  
W1/2 SW1/4 SEC. 16, T22S, R6W, W. M.  
For: Mazama Timber Products, Inc.  
Creswell, Oregon  
By: Shaner Engineering, Inc.  
Roseburg, Oregon  
June 26, 1978