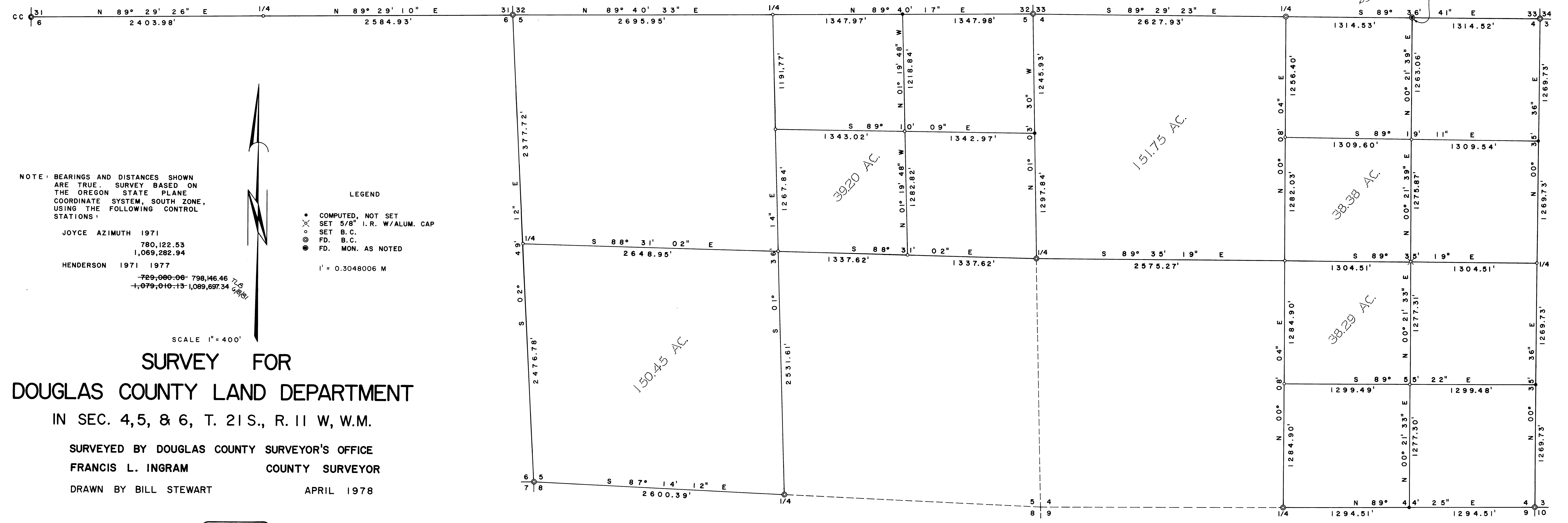


FILED  
RECEIVED *2/8*  
MAY 15 1978  
COUNTY SURVEYOR  
DOUGLAS COUNTY, ORE.  
*BS*

FD. 1" I.P. BEARS  
S 09° 36' 12" E,  
3.56 FEET FROM  
COMPUTED POINT



NOTE: BEARINGS AND DISTANCES SHOWN ARE TRUE SURVEY BASED ON THE OREGON STATE PLANE COORDINATE SYSTEM, SOUTH ZONE, USING THE FOLLOWING CONTROL STATIONS:

JOYCE AZIMUTH 1971  
780,122.53  
1,069,282.94  
HENDERSON 1971 1977  
-729,080.06 798,146.46  
+1,079,010.13 -1,089,697.34

LEGEND  
● COMPUTED, NOT SET  
○ SET 5/8" I. R. W/ALUM. CAP  
○ SET B. C.  
○ FD. B. C.  
○ FD. MON. AS NOTED  
1" = 0.3048006 M

SCALE 1" = 400'

# SURVEY FOR DOUGLAS COUNTY LAND DEPARTMENT

IN SEC. 4, 5, & 6, T. 21 S., R. 11 W, W.M.

SURVEYED BY DOUGLAS COUNTY SURVEYOR'S OFFICE  
FRANCIS L. INGRAM COUNTY SURVEYOR

DRAWN BY BILL STEWART APRIL 1978

REGISTERED PROFESSIONAL LAND SURVEYOR  
*Francis L. Ingram*  
OREGON  
FRANCIS L. INGRAM  
902

C.S. FILE # 40-1-12  
Map File RM 3-13

C.S. FILE # 40-1-12  
Map File 3-13