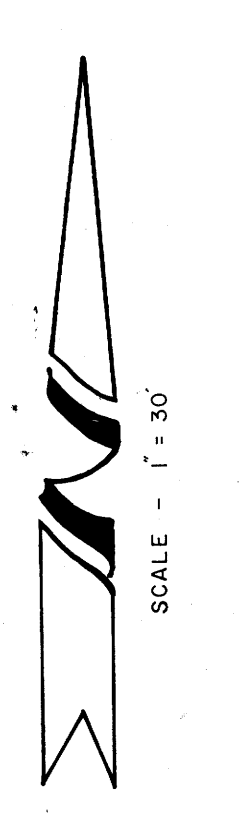
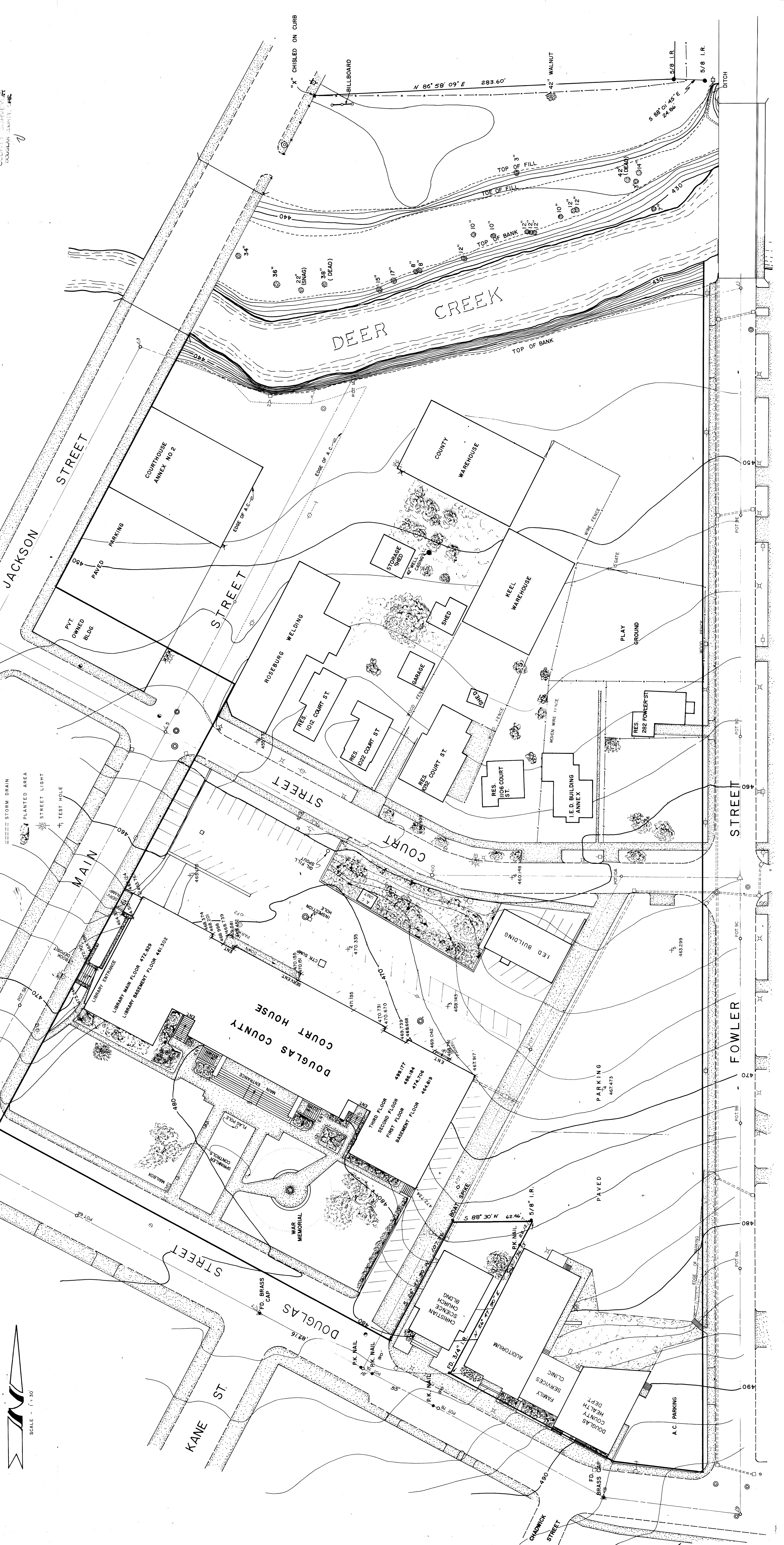


TOPOGRAPHIC MAP
DOUGLAS COUNTY COURTHOUSE VICINITY
 ROSEBURG, OREGON
 JUNE 1974
 PREPARED BY DOUGLAS COUNTY ROAD DEPT.

FILED
 RECEIVED
 MAR 24 1975
 COUNTY SURVEYOR
 DOUGLAS COUNTY, ORE.

- LEGEND**
- MANHOLE
 - POWER POLE
 - TELEPHONE POLE
 - TELEPHONE PEDESTAL
 - ↓ DOWN GUY
 - CONCRETE WALK OR DRIVE
 - CONCRETE CURBING
 - STORM DRAIN
 - PLANTED AREA
 - STREET LIGHT
 - TEST HOLE
 - GAS VALVE
 - CLEANOUT
 - WATER VALVE
 - GAS METER
 - WATER METER
 - CATCH BASIN
 - STREET MONUMENT



CS-44
 RM3-1A