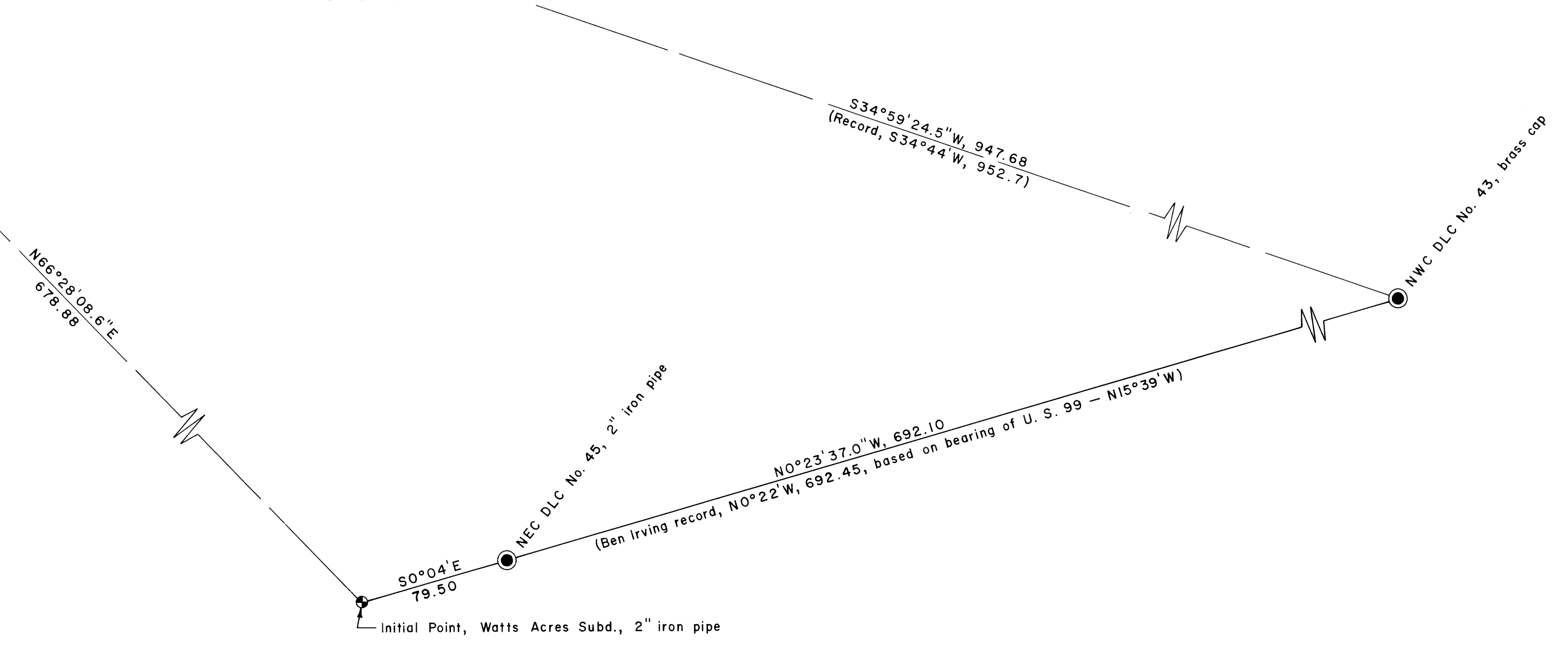
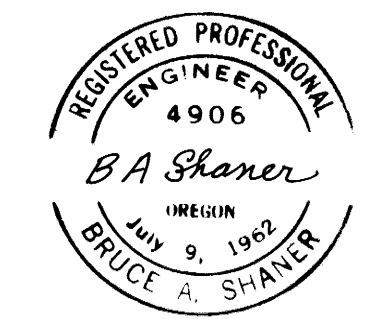


**PROPERTY LINE SURVEY IN WATTS ACRES
AND WATTS ACRES, PLAT 2, SUBDIVISIONS
IN THE NE 1/4 SEC. 11, T. 28 S., R. 6 W.,
W. M., DOUGLAS COUNTY, OREGON**

For: United Parcel Service &
John Bell Logging, Inc.
By: Shaner Engineering, Inc.
September 3, 1976



- LEGEND**
- Corner found (as noted) •
 - Corner set (5/8" iron rod with aluminum cap) ○
 - Corner computed (not set) ◐
 - Power pole ■