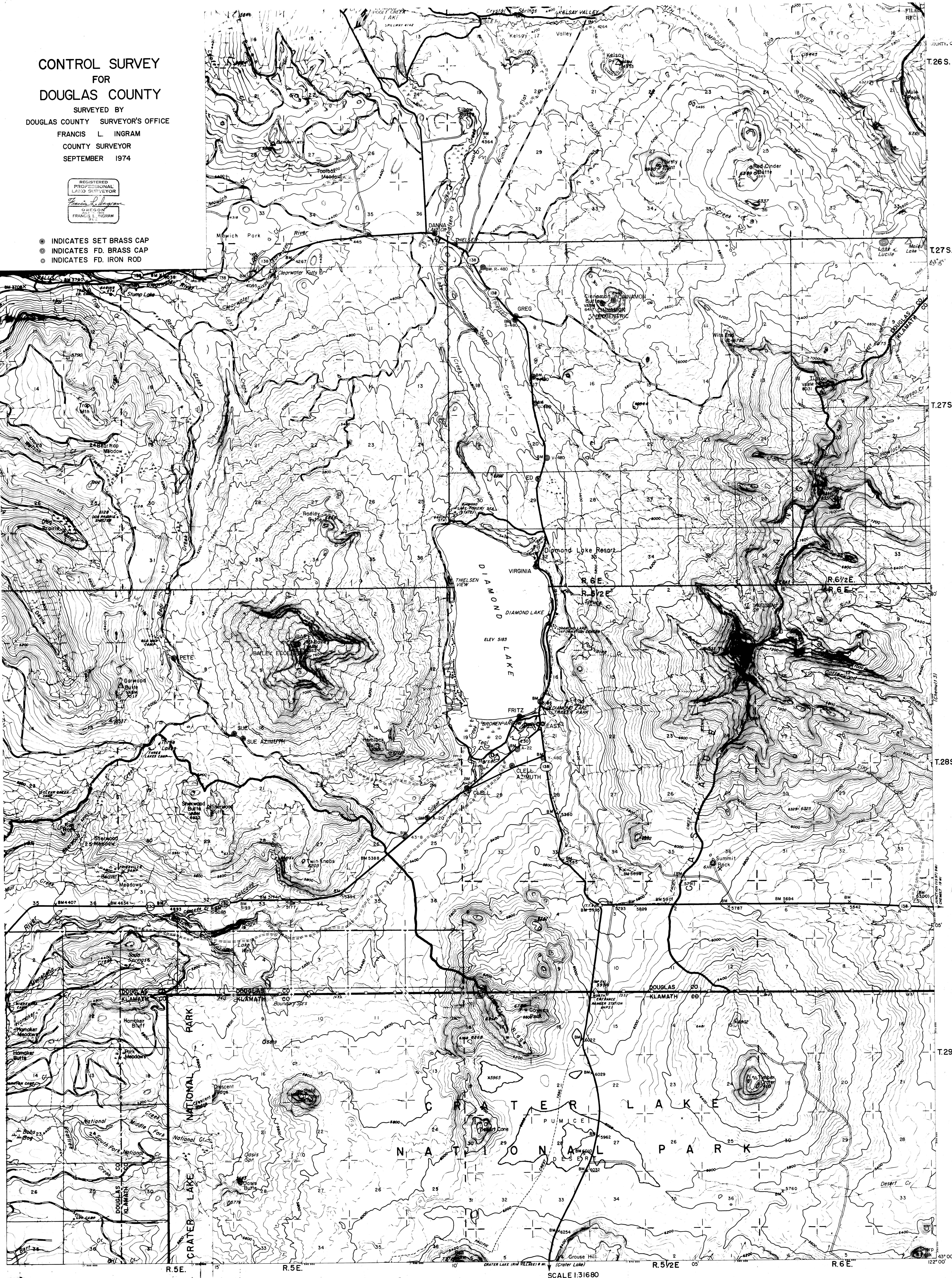


CONTROL SURVEY FOR DOUGLAS COUNTY

SURVEYED BY
DOUGLAS COUNTY SURVEYOR'S OFFICE
FRANCIS L. INGRAM
COUNTY SURVEYOR
SEPTEMBER 1974



- INDICATES SET BRASS CAP
- INDICATES FD. BRASS CAP
- INDICATES FD. IRON ROD



Mapped by U.S. Forest Service, Portland, Oregon
by Stereophotogrammetric methods.
Control by U.S.C. & G.S., U.S.G.S. and Forest Service.

Polyconic Projection, 1927 North American Datum
10,000 - foot grid based on state coordinate system,
Oregon, south zone.

SCALE 1:31680

Map revised from data assembled by:
Winema N.F. 1971
Rogue River N.F., May 1968
Umpqua N.F., May 1969

ROAD CLASSIFICATION	
HEAVY DUTY ALL WEATHER	DRY WEATHER
Paved Road	Dirt Road
Rock Surface Road	Primitive Road
U.S. Route	State Route