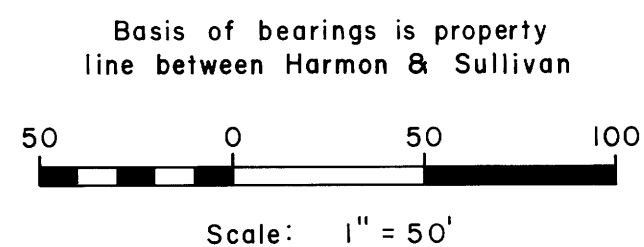


Handwritten notes and signatures in the top right corner.

LEGEND

- Corner found (as noted) •
- Corner set (5/8" iron rod with aluminum cap) ○
- Corner computed, not set □
- Boyer's subd. survey - - - - -



COON'S DILLARD SUBDIVISION

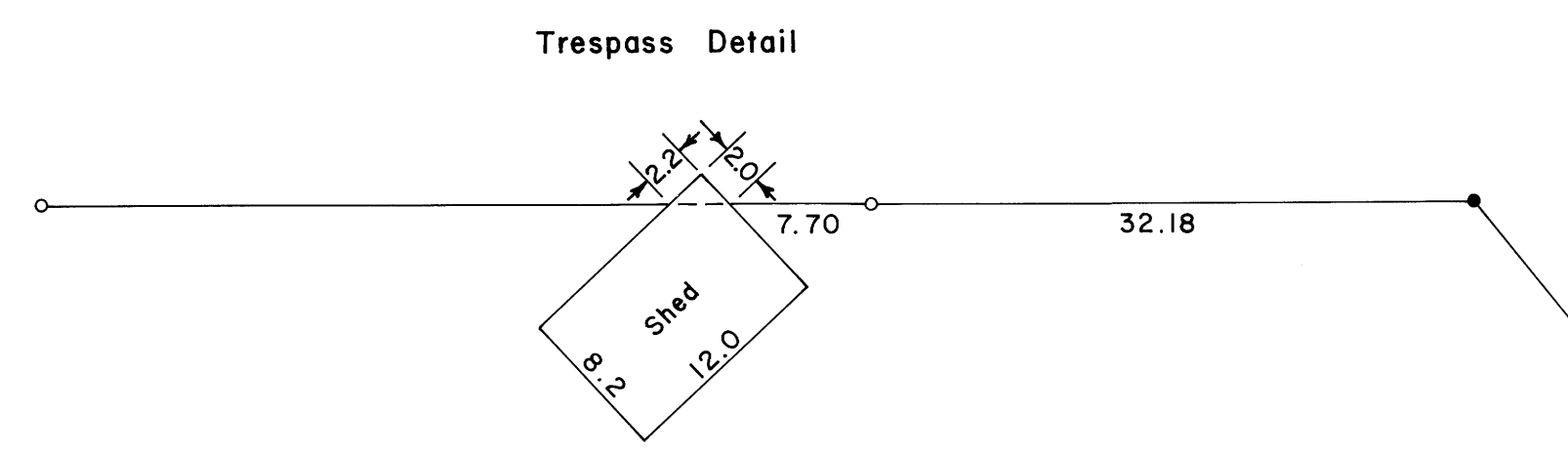
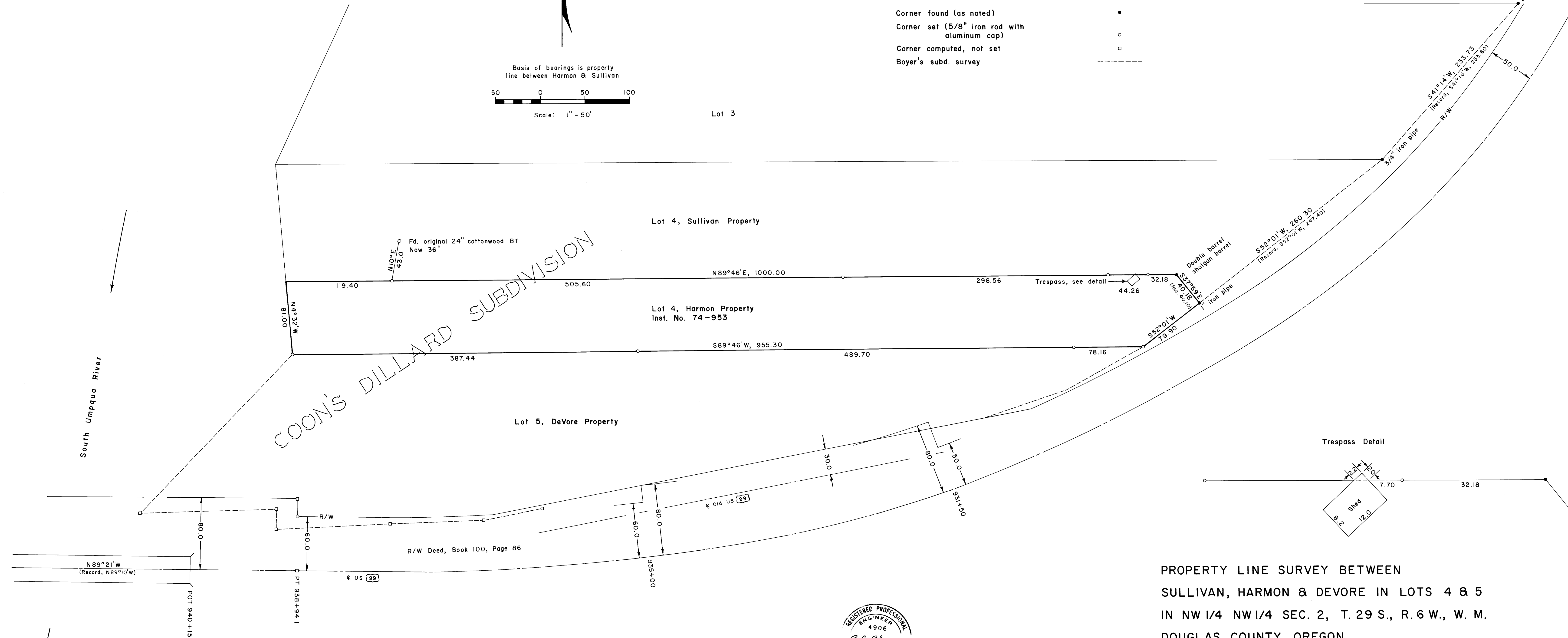
South Umpqua River

Lot 3

Lot 4, Sullivan Property

Lot 4, Harmon Property  
Inst. No. 74-953

Lot 5, DeVore Property



PROPERTY LINE SURVEY BETWEEN  
 SULLIVAN, HARMON & DEVORE IN LOTS 4 & 5  
 IN NW 1/4 NW 1/4 SEC. 2, T. 29 S., R. 6 W., W. M.  
 DOUGLAS COUNTY, OREGON

For: Eugene A. Sullivan, Charles J. Harmon & Marvin DeVore  
 By: Shaner Engineering, Inc.  
 March 8, 1975

