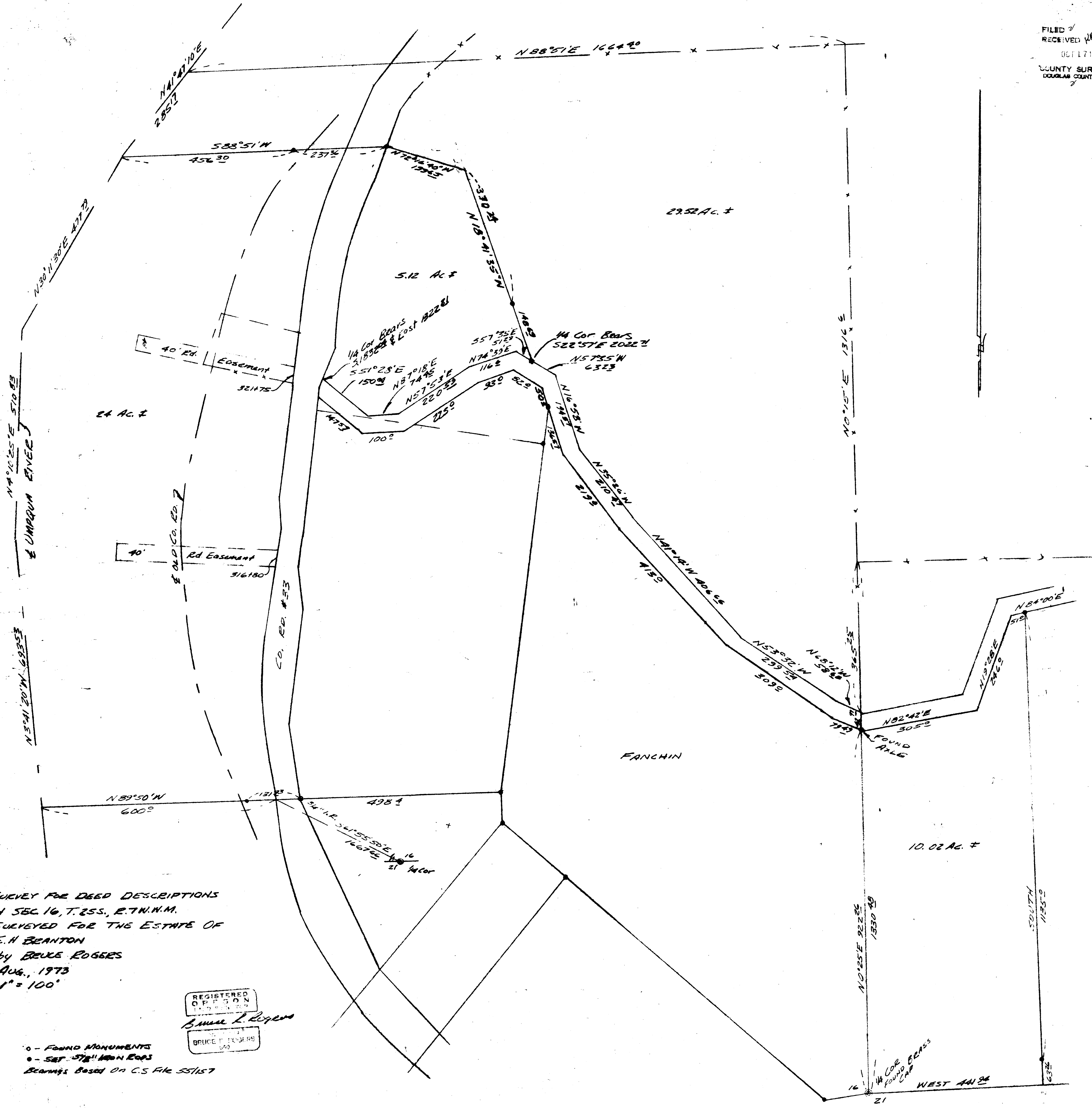


FILED &
RECEIVED
08/17/73
COUNTY SURVEYOR
DOUGLAS COUNTY, ORE

MAP FILE # 222



SURVEY FOR DEED DESCRIPTIONS
IN SEC 16, T. 25S., R. 7W., N.M.
SURVEYED FOR THE ESTATE OF
E.H. BEANTON
BY BRUCE ROGERS
AUG., 1973
1" = 100'

REGISTERED
O.P. # 1000
BRUCE L. ROGERS
BRUCE ROGERS
S.D.

o - FOUND MONUMENTS
- SET STATION MONUMENTS
Bearings Based on C.S. File 551157

MAP FILE # 222