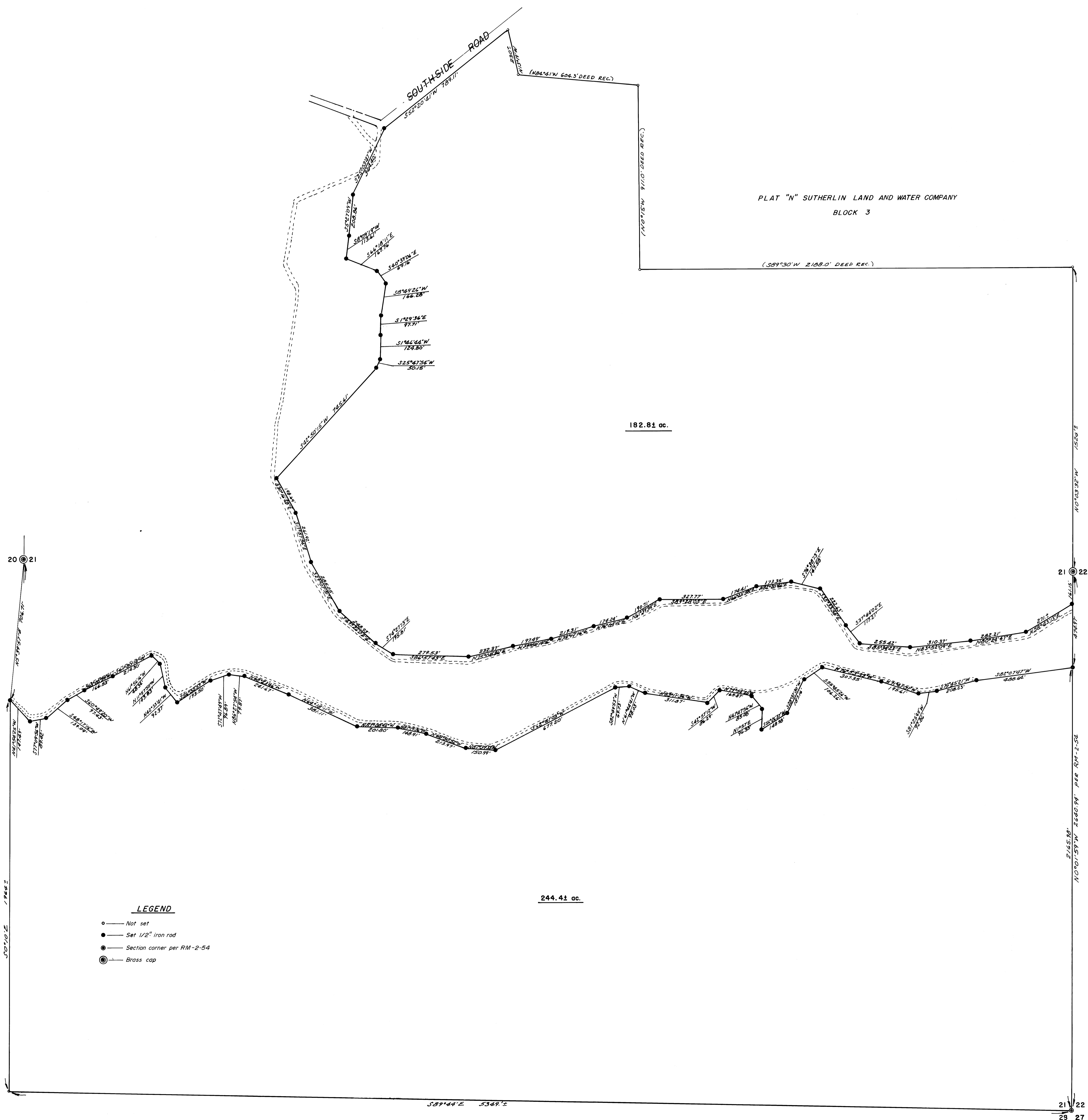


SURVEY TO SET PROPERTY CORNERS IN SECTION 21, T.25S. R.5W.W.M.

FOR: FRED HARRINGTON
BY: BAUGHMAN SURVEYING SERVICE
JULY 1974 SCALE: 1"=200'

FILED /
RECEIVED
JUL 1 1974
COUNTY SURVEYOR
COOS COUNTY, OREGON



LEGEND
 ○ — Not set
 ● — Set 1/2" iron rod
 ● — Section corner per RM-2-54
 ⊙ — Brass cap

Based on Solar Observation 7/15/74

REGISTERED PROFESSIONAL LAND SURVEYOR
Glenn S. Baughman
 OREGON
 GLENN S. BAUGHMAN
 536