

FILED
RECEIVED 24
JUN 25 1974

COUNTY SURVEYOR
DOUGLAS COUNTY, ORE.
MJK

Fd. brass cap mkd.
County Surveyor's Office
T265, R8W
S27, S34 1970
From which a:
74" original Douglas fir BT
Snag, scribings vis.
Bears S24°W, 30.4 ft.
15" Douglas fir BT
Scribings vis.
Bears S7°E, 20.3 ft.
(Record, 7.3 ft.)
15" Douglas fir BT
Scribings vis.
Bears N67°E, 11.4 ft.

Fd. brass cap mkd.
T265, R8W, WM
E1/16 S27, S34 1973
From which a:
14" Douglas fir BT
Scribings vis.
Bears North, 22.4 ft.
12" Douglas fir BT
Scribings vis.
Bears S32°E, 117.4 ft.

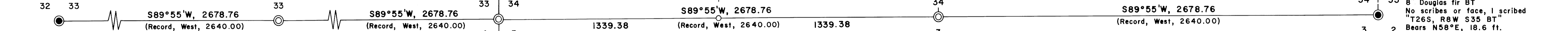
Fd. brass cap mkd.
T265, R8W, WM
S27, S26, S34, S35 1973
From which a:
12" Douglas fir BT
Scribings vis.
Bears N84°W, 27.4 ft.
10" Douglas fir BT
Scribings vis.
Bears N43°E, 32.1 ft.
10" Douglas fir BT
Scribings vis.
Bears S61°W, 40.9 ft.
10" Douglas fir BT
Scribings vis.
Bears S67 1/2°E, 10.3 ft.

Fd. 2" iron pipe
With brass weather attached
Mkd. "RS 404"
From which a:
36" original Douglas fir BT
Now rotted snag
Bears N42°E, 37.6 ft.
36" original Douglas fir BT
Now rotted snag
Bears S63°E, 39.6 ft.
40" original Douglas fir BT
Now rotted snag
Bears S14°W, 88.4 ft. 28
42" original Douglas fir BT
Now rotted snag
Bears N31°W, 38.3 ft. 33
20" Douglas fir BT
Face grown over
Bears N8°W, 42.1 ft.
16" Douglas fir BT
Face grown over
Bears N12°E, 29.0 ft.
18" Douglas fir BT
Face grown over
Bears S72°E, 31.4 ft.
14" Douglas fir BT
Opened and found scribes
Bears S62°W, 6.4 ft.

Set brass cap mkd.
T265, R8W, WM
1/4 S33, S34 1974
From which a:
16" Douglas fir, 1 scribed
"1/4 S BT"
Bears N56°W, 11.6 ft.
16" Douglas fir, 1 scribed
"1/4 S BT"
Bears N28°E, 4.7 ft.
No original evidence found.

Set PK nail on the face of a
15 ft. high rock cliff
From which a:
Brass cap, 1 mkd.
Witness corner, South 3 ft. to
T265, R8W S33, S34
T275, R8W S4, S3 1974
Bears North, 3.0 ft.
14" cedar, 1 scribed
"T265, R8W S34 BT"
Bears N13°E, 17.9 ft.
30" Douglas fir, 1 scribed
"T265, R8W S33 BT"
Bears N50°W, 108.0 ft.
18" Douglas fir, 1 scribed
"T275, R8W S3 BT"
Bears S8°E, 26.0 ft.
16" Douglas fir, 1 scribed
"T275, R8W S4 BT"
Bears S18°W, 33.2 ft.
No original evidence found.*
Panther Cr. lies 20 ft. North.

* Area has been badly
burned and corner area
may have been badly
eroded by Panther Cr.



Fd. brass cap mkd.
US Dept. of the Interior
T265, R8W S32, S33
T275, R8W S5, S4
Bureau of Land Management
From which a:
30" Douglas fir BT stump
Badly rotted
Bears N20°E, 31.7 ft.
(Record, N2°E)
45" Douglas fir BT snag
Bears S38°E, 141.9 ft.
50" Douglas fir BT snag
Bears S61°W, 207.9 ft.
60" Douglas fir BT
Bark scribes vis.
Bears N10°E, 148.5 ft.
52" Douglas fir BT
Bark scribes vis.
Bears S84°W, 192.1 ft.
12" Douglas fir BT
Scribes vis.
Bears N38°E, 13.9 ft.
13" Douglas fir BT
Scribes vis.
Bears S23°E, 13.9 ft.
15" Douglas fir BT
Scribes vis.
Bears S76°W, 15.8 ft.
18" Douglas fir BT
Scribes vis.
Bears N38°W, 7.9 ft.

Set brass cap mkd.
T265, R8W, WM 1/4 S33
T275, R8W, WM 1/4 S4 1974
From which a:
24" Douglas fir, 1 scribed
"1/4 S BT"
Bears N13°W, 22.0 ft.
24" Douglas fir, 1 scribed
"1/4 S BT"
Bears S35°W, 26.9 ft.
No original evidence found.

Set brass cap mkd.
T275, R8W, WM
1/4 S4, S3 1974
From which a:
74" Douglas fir original BT
Now fire scarred stump
Bears S9°E, 184.0 ft.
50" cedar original BT
Badly burned stump with probable face
Bears S55°W, 214.0 ft.
(Record, 150.5 ft.)
84" Douglas fir original line tree
Now badly burned stump
Bears South, 278.0 ft.
(Record, 334.0 ft.)
48" Douglas fir original line tree
Now badly burned stump
Bears North, 214.0 ft.
(Record, 194.0 ft.)
Stream, 4 lks. wide, course NW
Bears South, 625.0 ft.
(Record, 594.0 ft.)
14" Douglas fir, 1 scribed
"S3 1/4 S BT"
Bears S4°E, 11.9 ft.
18" Douglas fir, 1 scribed
"S4 1/4 S BT"
Bears N31°W, 19.1 ft.

Set brass cap mkd.
T265, R8W, WM 1/4 S34
T275, R8W, WM 1/4 S3 1974
From which a:
26" Douglas fir, 1 scribed
"1/4 S BT"
Bears N27°E, 5.7 ft.
22" Douglas fir, 1 scribed
"1/4 S BT"
Bears S8 1/2°E, 16.0 ft.
No original evidence found.

Set brass cap mkd.
T265, R8W, WM
CS 1/16 S34 1974
From which a:
14" Douglas fir, 1 scribed
"CS 1/16 BT"
Bears N4°W, 24.5 ft.
10" Douglas fir, 1 scribed
"CS 1/16 BT"
Bears S74°E, 24.9 ft.

Set brass cap mkd.
T265, R8W, WM
SW 1/16 S34 1974
From which a:
8" Douglas fir, 1 scribed
"SW 1/16 BT"
Bears S59°W, 17.6 ft.
14" Douglas fir, 1 scribed
"SW 1/16 BT"
Bears S82°E, 21.7 ft.
Corner on steep hillside
200 ft. s. below high
rock bluff.

Set brass cap mkd.
T265, R8W, WM
CN 1/16 S34 1974
From which a:
10" Douglas fir, 1 scribed
"CN 1/16 BT"
Bears N18°W, 15.6 ft.
18" Douglas fir, 1 scribed
"CN 1/16 BT"
Bears N83°W, 14.2 ft.

Set brass cap mkd.
T265, R8W, WM
NW 1/16 S34 1974
From which a:
12" Douglas fir, 1 scribed
"NW 1/16 BT"
Bears N5°E, 5.4 ft.
20" Douglas fir, 1 scribed
"NW 1/16 BT"
Bears S2°W, 27.7 ft.

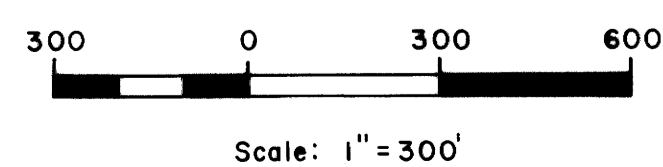
Fd. brass cap mkd.
T265, R8W, WM
1/4 S34, S35 1973
From which a:
52" original Douglas fir BT
Scribes vis.
Bears N55°W, 158.4 ft.
12" Douglas fir BT
Scribes vis.
Bears N44°E, 15.0 ft.
10" Douglas fir BT
Scribes vis.
Bears S53°W, 5.9 ft.

Fd. 1 1/2" iron pipe and
Set brass cap alongside mkd.
T265, R8W, WM
S34, S35
T275, R8W, WM
S3, S2 1974
From which a:
60" original Douglas fir BT
Stump with partial face
Bears S25°E, 42.2 ft.
6" yew, possible BT
Down and rotting
Bears S10°W, 29.0 ft.
36" Douglas fir stump
Scribes vis.
Bears S81°E, 36.5 ft.
10" Douglas fir BT
No scribes or face, 1 scribed
"T265, R8W S35 BT"
Bears N58°E, 18.6 ft.

10" Douglas fir BT
Faced but no scribes vis., 1 scribed
"T265, R8W S34 BT"
Bears N68°W, 13.1 ft.
8" madrone BT
Bark scribes vis.
Bears S87°W, 17.6 ft.
8" hemlock BT
Faced but no scribes, 1 scribed
"T275, R8W S2 BT"
Bears S77°E, 10.7 ft.
Badly burned post with
scribes vis. wired to pipe.
Last 4 trees have "Wayco" tags
and "W" nails in root collars.

PROPERTY LINE SURVEY IN
SECTION 34, T.26 S., R.8 W., W. M.
For: Hub Lumber Co.
Roseburg, Oregon

By: Shaner Engineering, Roseburg, Oregon
June 24, 1974



Bearings based on
solar observation.
Mean magnetic declination 20°E.

