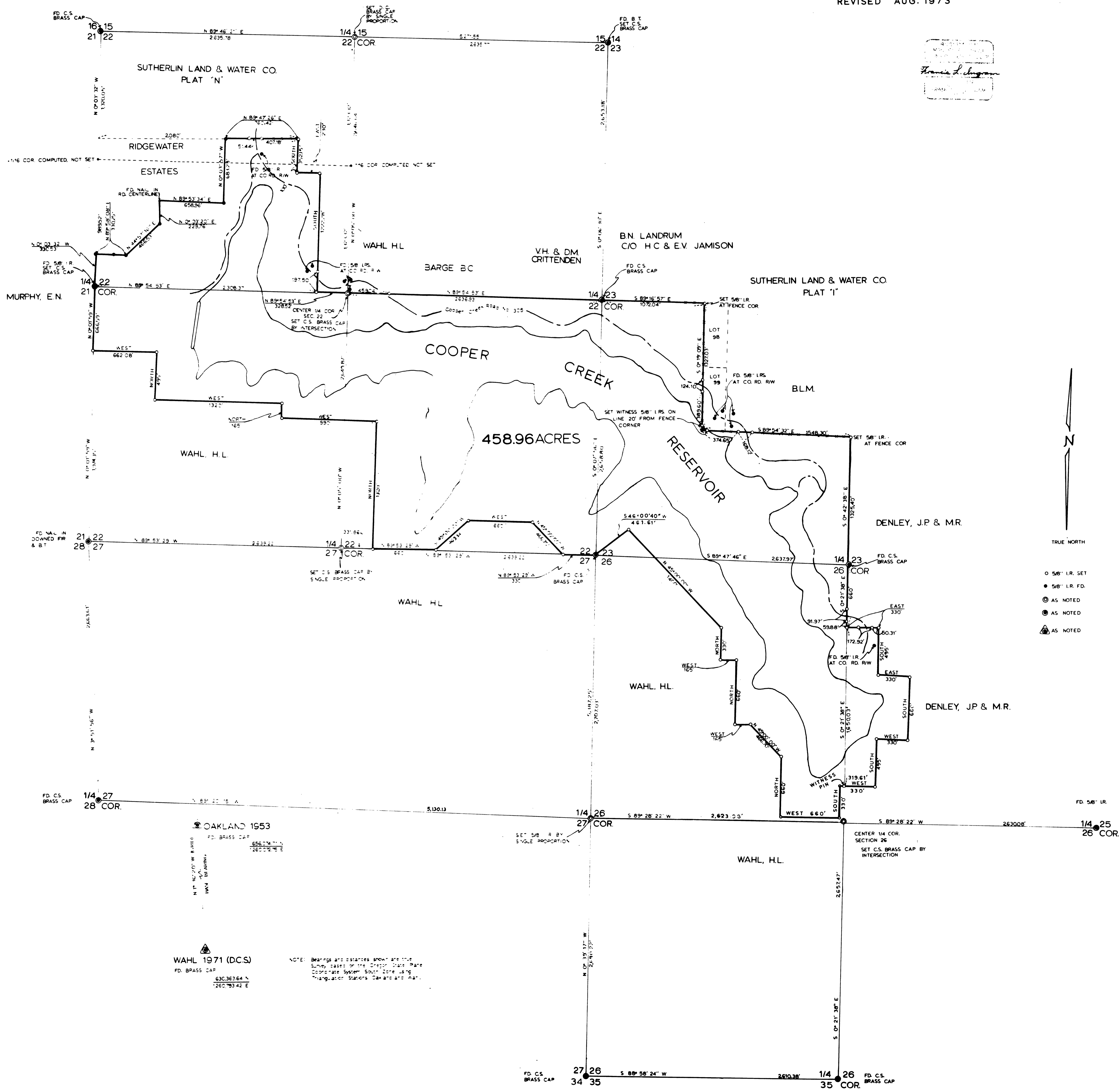


# COOPER CREEK RESERVOIR BOUNDARY SURVEY T. 25 S., R. 5 W, SECS. 22, 23, 26 & 27, W.M.

Surveyed for Douglas County  
Surveyed by Douglas County Surveyor's Office  
Francis L. Ingram  
Scale: 1" = 400'  
March, 1973

REVISED AUG. 1973

Francis L. Ingram  
Surveyor



TRUE NORTH

- 56" LR. SET
- 56" LR. FD.
- ⊙ AS NOTED
- ⊙ AS NOTED
- ⊙ AS NOTED

NOTE: Bearings and distances shown are true bearings and distances of the Cooper Creek Reservoir boundary survey. The survey was conducted using a traverse system with a single station. The survey was conducted on March 1973.