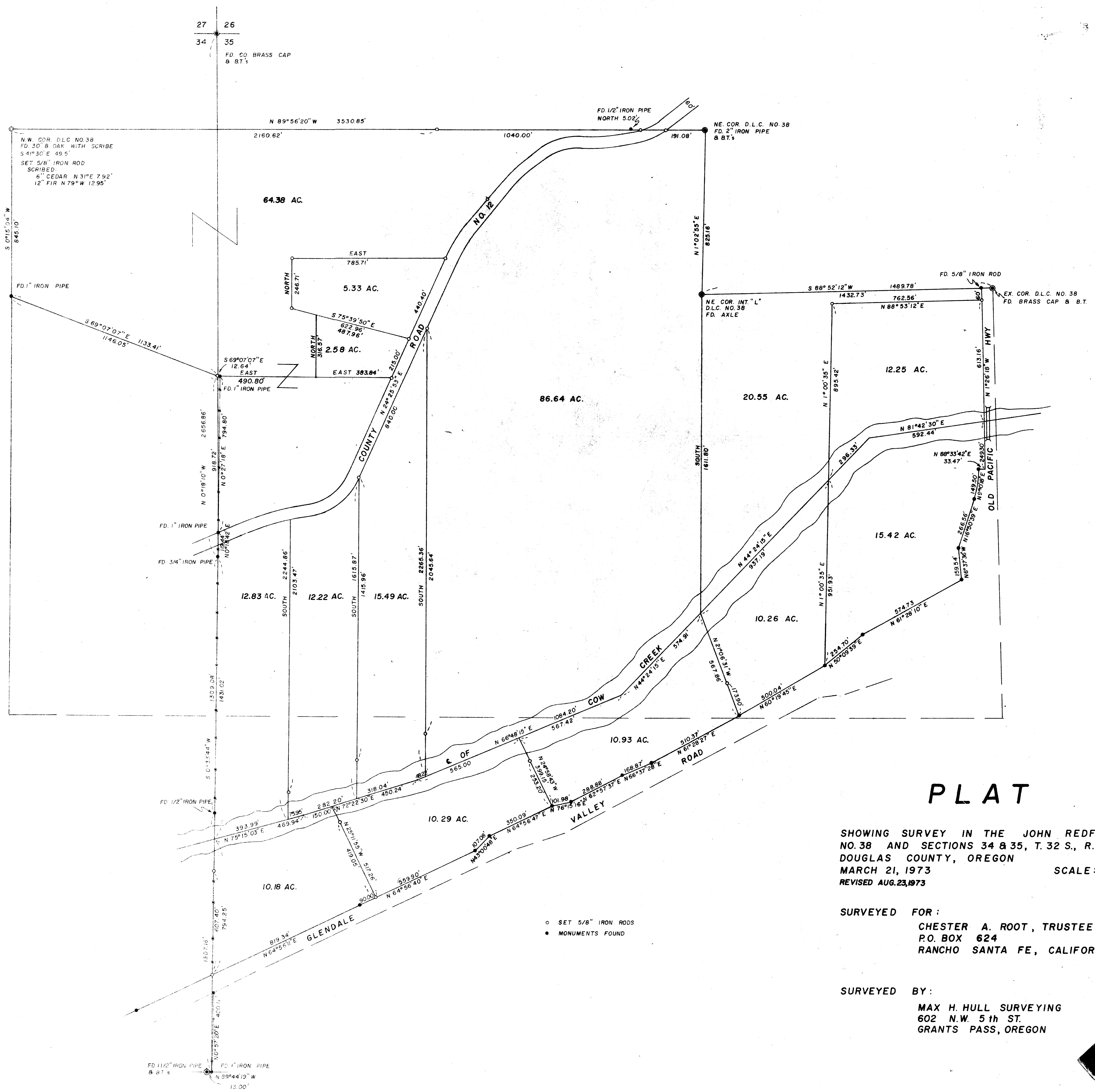


FILED
RECEIVED
AUG 30 1973
COUNTY SURVEYOR
DOUGLAS COUNTY, ORE.



PLAT

SHOWING SURVEY IN THE JOHN REDFIELD D.L.C. NO. 38 AND SECTIONS 34 & 35, T. 32 S., R. 6 W., W.M., DOUGLAS COUNTY, OREGON
 MARCH 21, 1973 SCALE: 1" = 200'
 REVISED AUG. 23, 1973

SURVEYED FOR:
 CHESTER A. ROOT, TRUSTEE
 P.O. BOX 624
 RANCHO SANTA FE, CALIFORNIA

SURVEYED BY:
 MAX H. HULL SURVEYING
 602 N.W. 5th ST.
 GRANTS PASS, OREGON

- SET 5/8" IRON RODS
- MONUMENTS FOUND