

26

25

FILED 77
AUGUST 14
1973
CLARENCE G. GARDNER
COUNTY CLERK

35

36

R6W
R5W

T27S R6W WM
T28S R6W "

R6W
R5W

TRACTS

ORCHARD

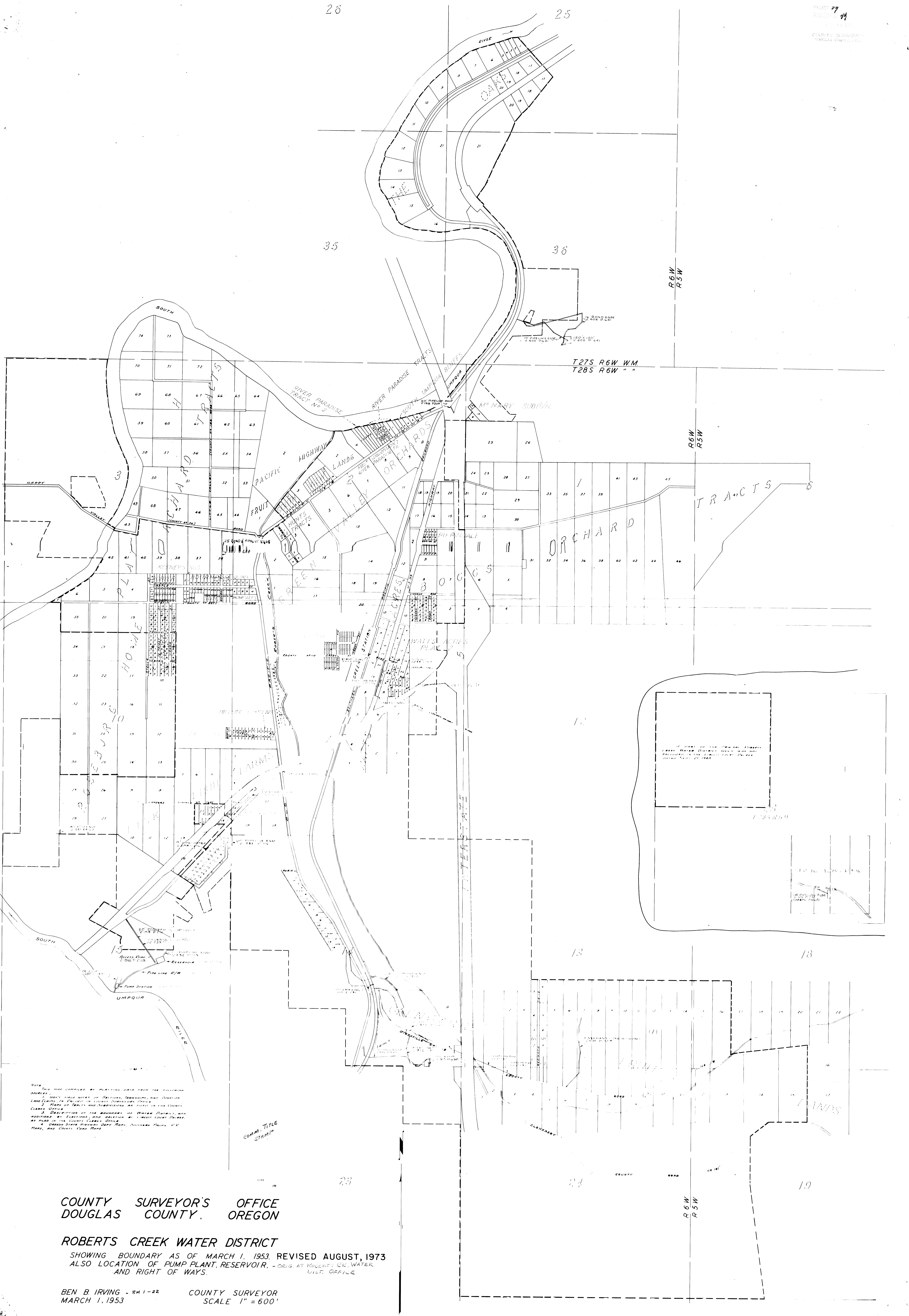
RESERVOIR

13

18

19

R6W
R5W



NOTE:
 This map compiled by platting data from the following sources:
 1. 1891 field notes of Sections, Townships, and Range Land Claims in the State of Oregon.
 2. Maps of Townships and Sections as filed in the County Clerk's Office.
 3. Description of the boundaries of Water Districts, with additions by Elections, and location of County Court House, as made in the County Clerk's Office.
 4. Oregon State Highway Data Maps, including Plans, A, B, and C, and County Road Maps.

COMM. TITLE STAMPS

COUNTY SURVEYOR'S OFFICE
DOUGLAS COUNTY, OREGON

ROBERTS CREEK WATER DISTRICT
SHOWING BOUNDARY AS OF MARCH 1, 1953, REVISED AUGUST, 1973
ALSO LOCATION OF PUMP PLANT, RESERVOIR, - ORIG. AT ROBERTS CR. WATER DIST. OFFICE
AND RIGHT OF WAYS.

BEN B. IRVING - RM 1-22 COUNTY SURVEYOR
MARCH 1, 1953 SCALE 1" = 600'

CM 2-51

WV 5-1