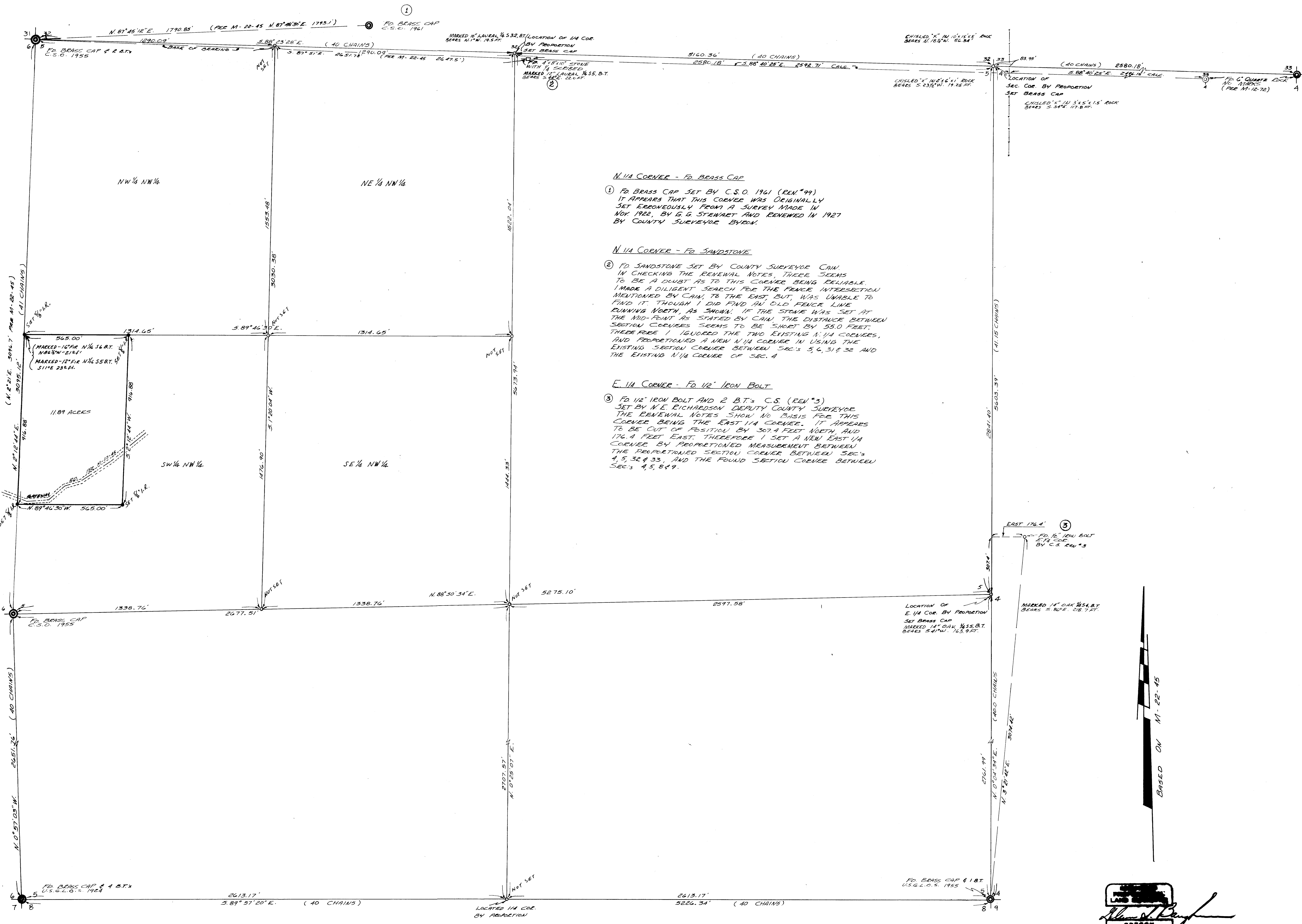


SURVEY FOR PROPERTY CORNERS
 IN SEC. 5, T.29S., R.7W., W.M.
 FOR MR. PAUL SLAMA
 BY BAUGHMAN SURVEYING SERVICE

MAY 1973

SCALE 1" = 200'

FILED
 RECEIVED
 JUN 1 1973
 COUNTY SURVEYOR
 DOUGLAS COUNTY, ORE.



N 1/4 CORNER - FD BRASS CAP
 ① FD BRASS CAP SET BY C.S.O. 1961 (REN #99)
 IT APPEARS THAT THIS CORNER WAS ORIGINALLY
 SET ERRONEOUSLY FROM A SURVEY MADE IN
 NOV. 1922, BY G.G. STEWART AND RENEWED IN 1927
 BY COUNTY SURVEYOR BYRON.

N 1/4 CORNER - FD SANDSTONE
 ② FD SANDSTONE SET BY COUNTY SURVEYOR CAM.
 IN CHECKING THE RENEWAL NOTES, THERE SEEMS
 TO BE A DOUBT AS TO THIS CORNER BEING RELIABLE.
 I MADE A DILIGENT SEARCH FOR THE FENCE INTERSECTION
 MENTIONED BY CAM, TO THE EAST, BUT, WAS UNABLE TO
 FIND IT. THOUGH I DID FIND AN OLD FENCE LINE
 RUNNING NORTH, AS SHOWN. IF THE STONE WAS SET AT
 THE MID-POINT AS STATED BY CAM, THE DISTANCE BETWEEN
 SECTION CORNERS SEEMS TO BE SHORT BY 55.0 FEET.
 THEREFORE I IGNORED THE TWO EXISTING N 1/4 CORNERS,
 AND PROPORTIONED A NEW N 1/4 CORNER IN USING THE
 EXISTING SECTION CORNER BETWEEN SEC'S 5, 6, 31 & 32 AND
 THE EXISTING N 1/4 CORNER OF SEC. 4

E 1/4 CORNER - FD 1/2" IRON BOLT
 ③ FD 1/2" IRON BOLT AND 2 B.T.'s C.S. (REN #3)
 SET BY N.E. RICHARDSON DEPUTY COUNTY SURVEYOR.
 THE RENEWAL NOTES SHOW NO BASIS FOR THIS
 CORNER BEING THE EAST 1/4 CORNER. IT APPEARS
 TO BE OUT OF POSITION BY 307.4 FEET NORTH, AND
 176.4 FEET EAST. THEREFORE I SET A NEW EAST 1/4
 CORNER BY PROPORTIONED MEASUREMENT BETWEEN
 THE PROPORTIONED SECTION CORNER BETWEEN SEC'S
 4, 5, 32 & 33, AND THE FOUND SECTION CORNER BETWEEN
 SEC'S 4, 5, 8 & 9.

BAUGHMAN SURVEYING SERVICE
 M. J. Baughman