

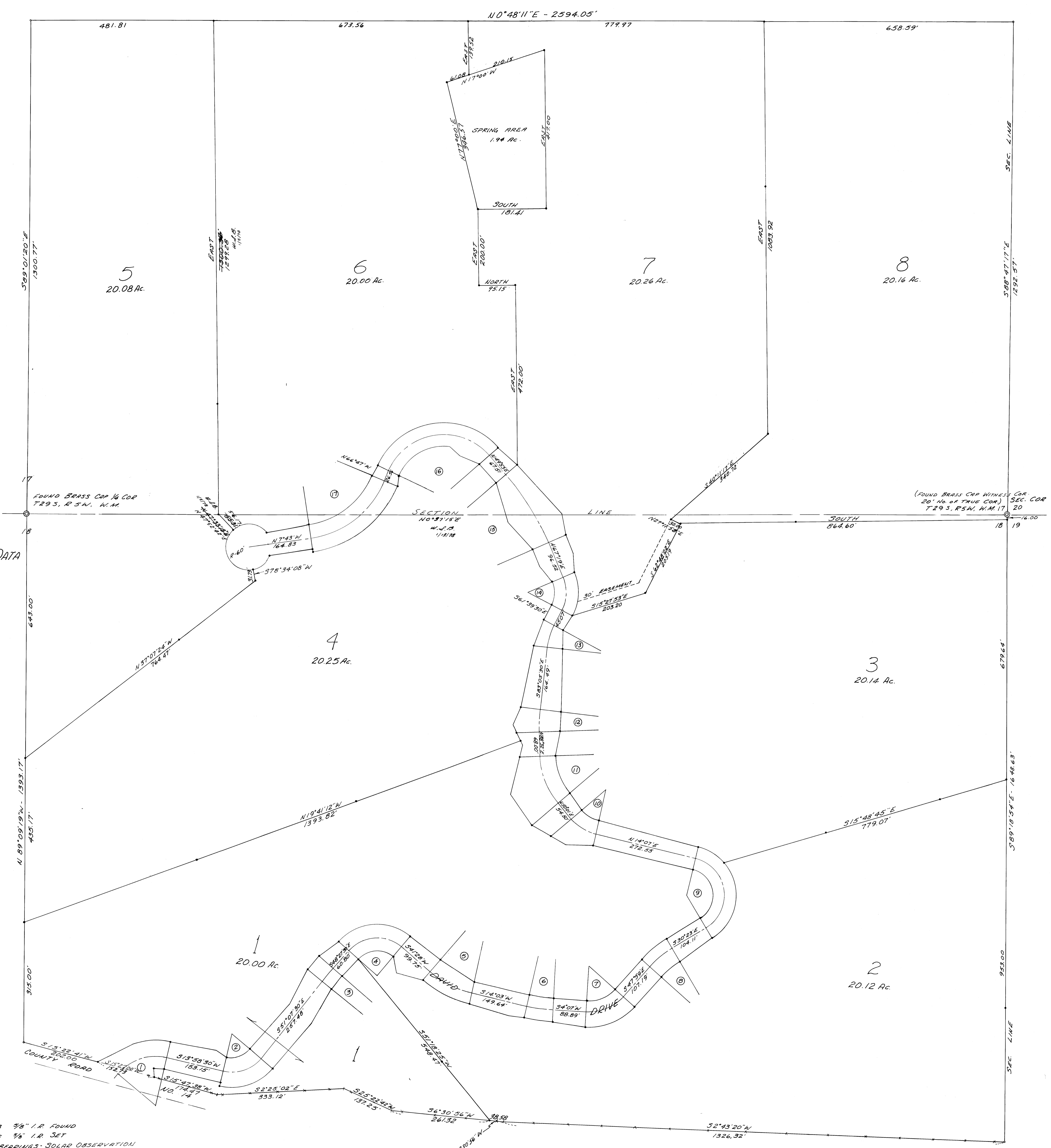
KNOB HILL ESTATES

SECS 17 & 18, T29S, R5W, W.M.

DOUGLAS COUNTY, OREGON

SUBDIVIDER - WARREN DICK
ENGINEER - W. S. BARNES
DECEMBER 1972

ALL RIGHTS RESERVED
NO PART OF THIS MAP
SHALL BE REPRODUCED
WITHOUT THE WRITTEN
CONSENT OF THE ENGINEER



CURVE DATA

- ① $\Delta = 63^{\circ}24'$
 $R = 130.0'$
 $T = 80.29'$
- ② $\Delta = 65^{\circ}06'$
 $R = 700.0'$
 $T = 63.83'$
- ③ $\Delta = 2^{\circ}40'$
 $R = 7000.0'$
 $T = 23.27'$
- ④ $\Delta = 89^{\circ}53'30''$
 $R = 100.0'$
 $T = 99.86'$
- ⑤ $\Delta = 27^{\circ}25'$
 $R = 239.11'$
 $T = 63.21'$
- ⑥ $\Delta = 9^{\circ}56'$
 $R = 400.0'$
 $T = 34.76'$
- ⑦ $\Delta = 52^{\circ}06'$
 $R = 120.0'$
 $T = 58.66'$
- ⑧ $\Delta = 17^{\circ}36'$
 $R = 250.0'$
 $T = 38.70'$
- ⑨ $\Delta = 135^{\circ}30'$
 $R = 100.0'$
 $T = 244.43'$
- ⑩ $\Delta = 35^{\circ}54'$
 $R = 120.0'$
 $T = 38.87'$
- ⑪ $\Delta = 38^{\circ}31'$
 $R = 200.0'$
 $T = 69.87'$
- ⑫ $\Delta = 8^{\circ}22'30''$
 $R = 400.0'$
 $T = 29.29'$
- ⑬ $\Delta = 21^{\circ}26'$
 $R = 160.0'$
 $T = 30.28'$
- ⑭ $\Delta = 37^{\circ}10'30''$
 $R = 100.0'$
 $T = 47.72'$
- ⑮ $\Delta = 17^{\circ}26'$
 $R = 700.0'$
 $T = 107.32'$
- ⑯ $\Delta = 116^{\circ}40'$
 $R = 160.0'$
 $T = 259.40'$
- ⑰ $\Delta = 39^{\circ}04'$
 $R = 248.7'$
 $T = 140.89'$

• DENOTES 3/8" I.R. FOUND
• DENOTES 3/4" I.R. SET
BASE OF BEARINGS - SOLAR OBSERVATION



SCALE: 1" = 100'