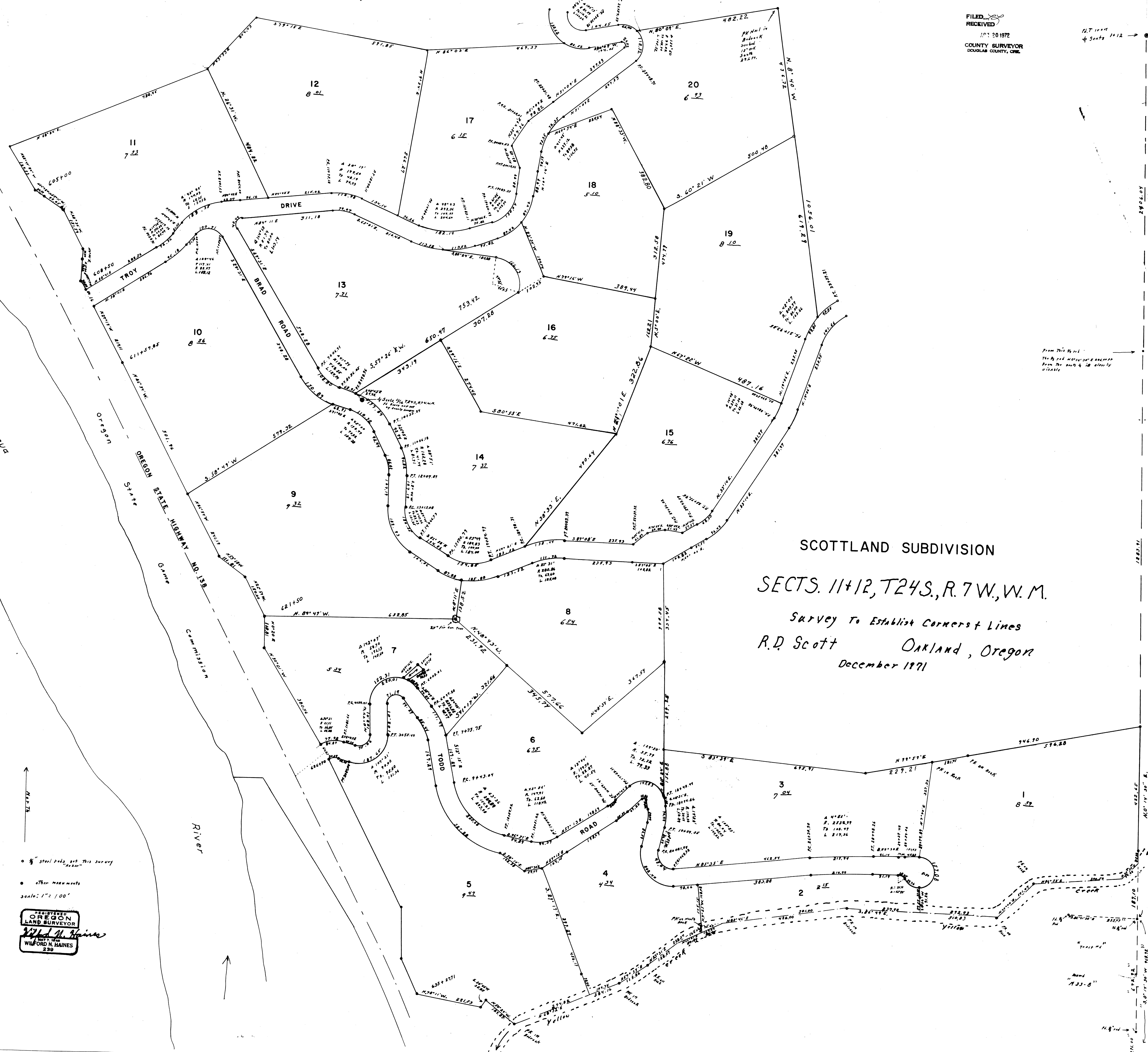


FILED
RECEIVED
NOV 20 1972
COUNTY SURVEYOR
DOUGLAS COUNTY, ORE.

1/2" = 100'
Scale

From this point
the road intersects
from the south & is clearly
visible



SCOTLAND SUBDIVISION
 SECTS. 11+12, T24S., R. 7W., W. M.
 Survey To Establish Corner & Lines
 R.D. Scott Oakland, Oregon
 December 1971

• 1/2" steel pins set this survey
 • other measurements
 scale: 1" = 100'

REGISTERED
 OREGON
 LAND SURVEYOR
 W. H. Haines
 WILFORD HAINES
 230