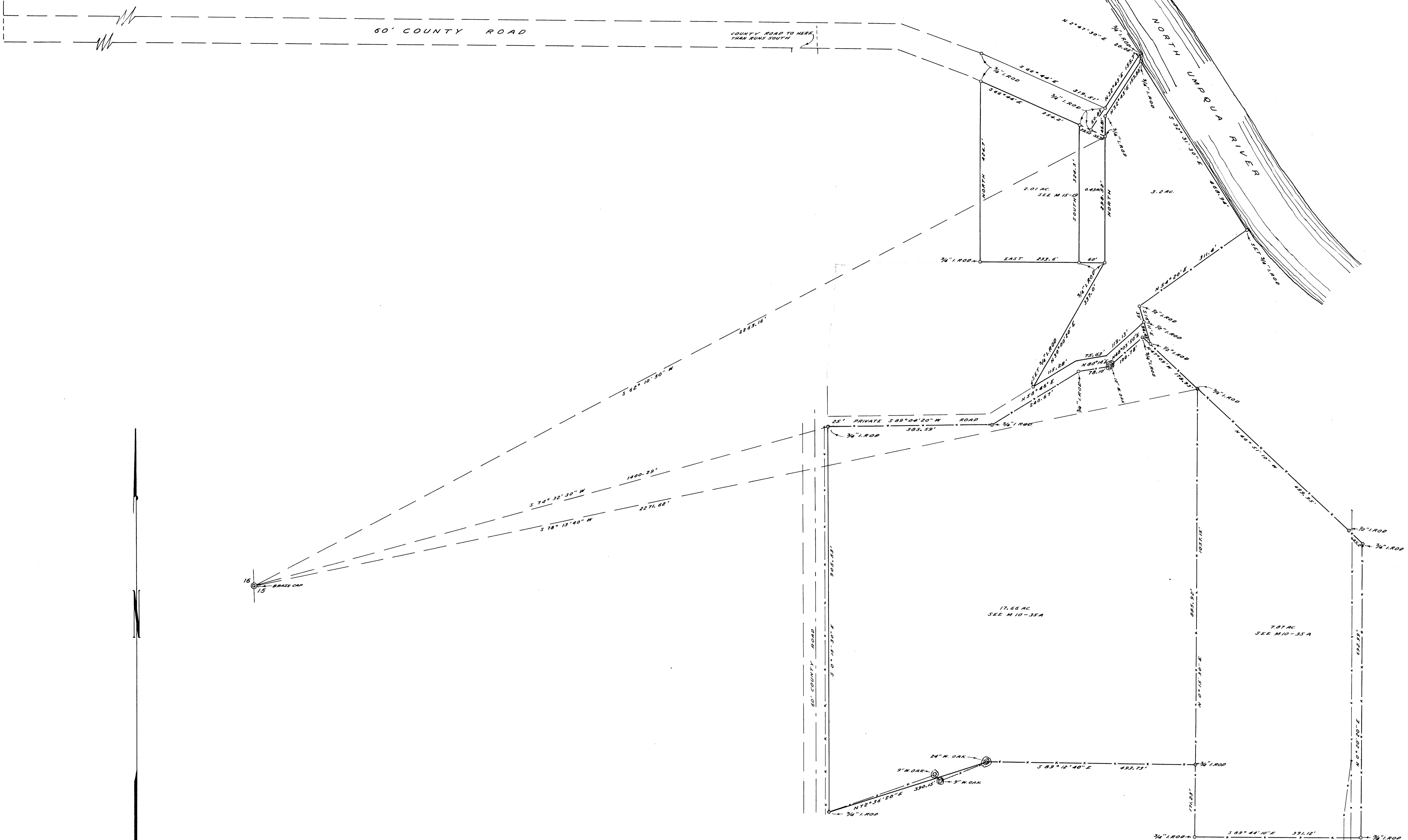


UNRECORDED SUBDIVISION M9-45

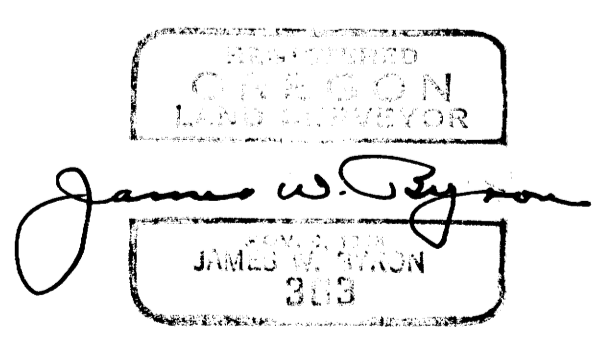


NOTE: ALL BEARINGS ARE TRUE, BASED ON "MINUTELY HOMES PLAT A"

COUNTY SURVEYOR'S OFFICE
DOUGLAS COUNTY, OREGON

SURVEY FOR DEED DESCRIPTION
SECTION 15, T26S., R.4W., W.M.

FRED M. DARBY COUNTY SURVEYOR
SURVEYED SEPT. 11, 1959 BY
JAMES W. BYRON - DEPUTY SCALE 1" = 100'
SURVEYED FOR W. R. MAGNESS



BRASS CAP 15
22