

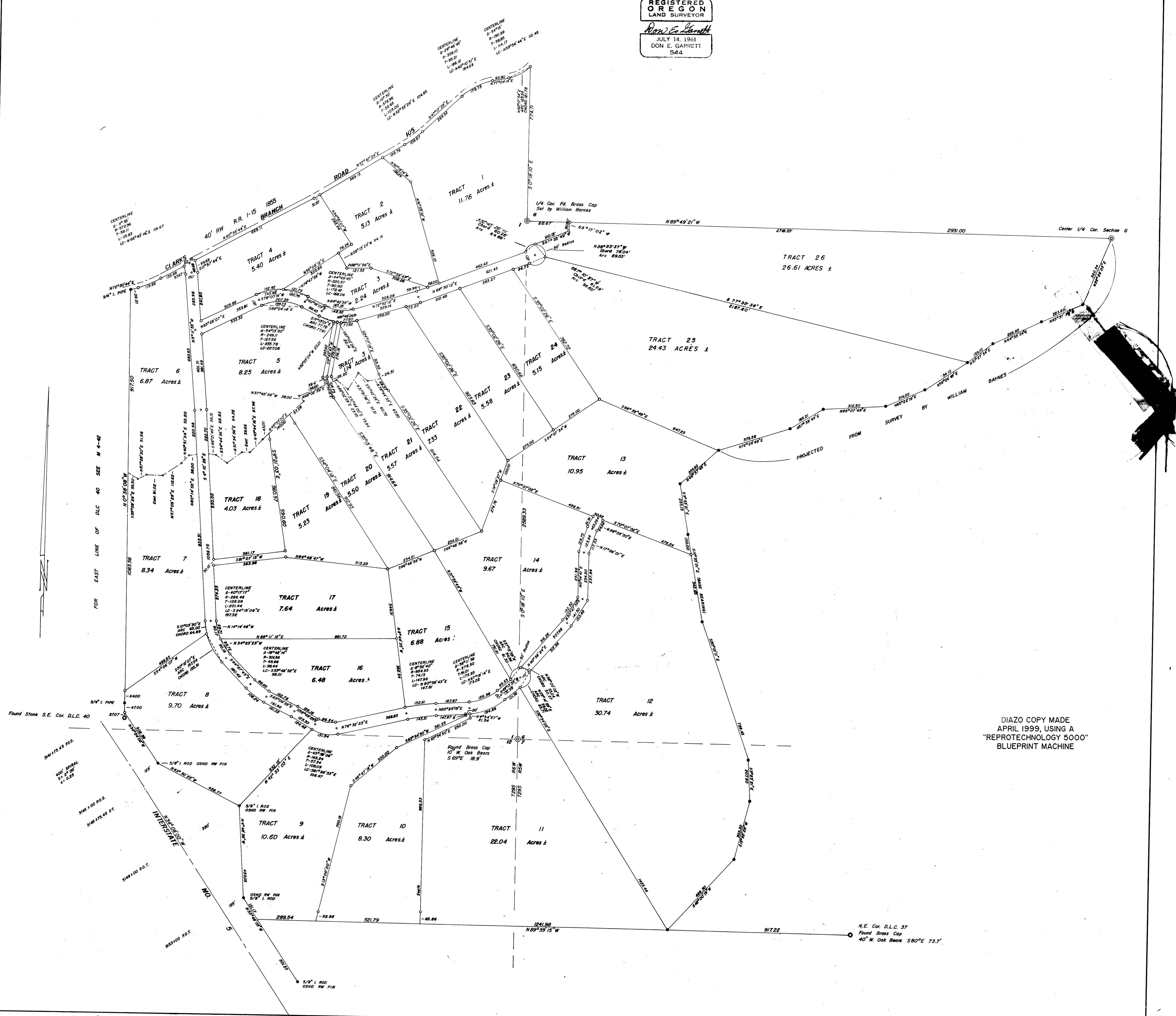
SURVEY IN SECTS. 1 & 12, T29S, R6W & SECTS. 6 & 7, T29S, R5W, W.M.
SURVEYED FOR ERNEST W. WEEKS BY DON E. GARRETT
FEBRUARY 1970

○ - SET 3/4" I. PIPE
● - FOUND 3/4" I. ROD

SCALE 1" = 200'

FILED
RECEIVED
APR 9 1970
C.A. [unclear]
D.L. [unclear]

REGISTERED
OREGON
LAND SURVEYOR
Don E. Garrett
JULY 14, 1961
DON E. GARRETT
544



DIAZO COPY MADE
APRIL 1999, USING A
"REPROTECHNOLOGY 5000"
BLUEPRINT MACHINE