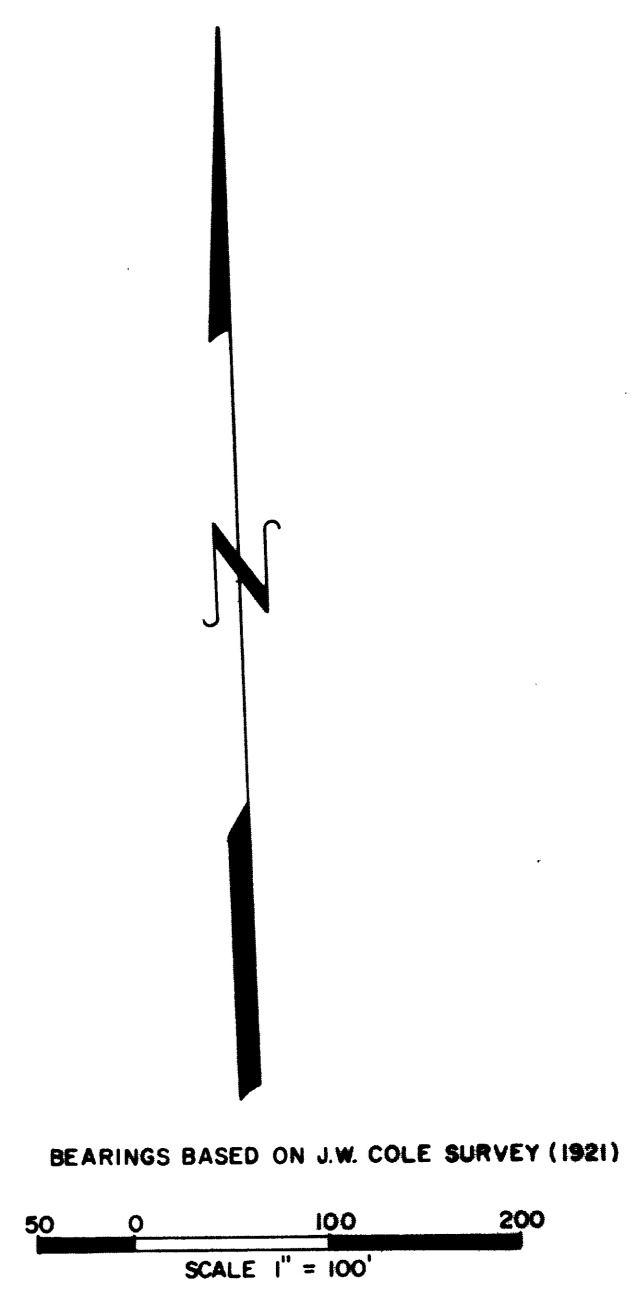
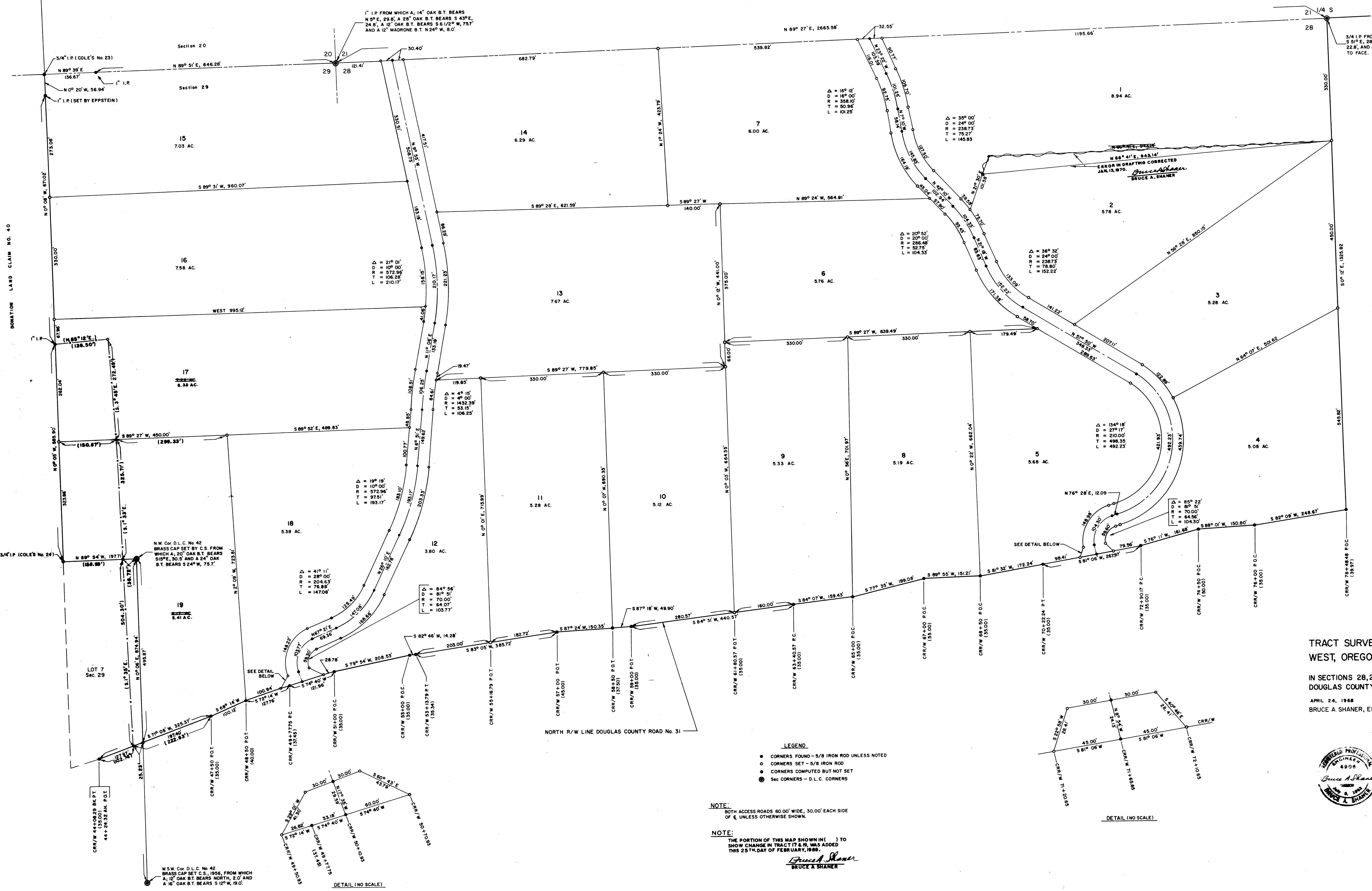


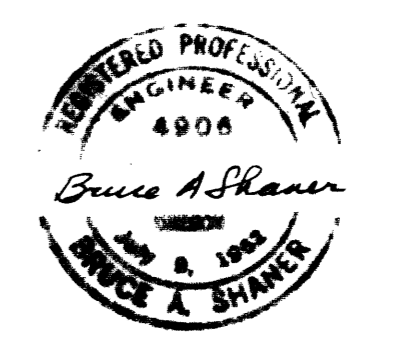
N.E. Cor. D.L.C. No. 40
 1" I.P. FROM WHICH AN 18" OAK B.T. (FACE ROTTED
 OUT), BEARS N 69° W, 28.0', AN 8" OAK B.T. BEARS
 S 8° E, 26.0', AND AN 18" OAK B.T. BEARS S 36° W, 49.0'.

1" I.P. FROM WHICH A 14" OAK B.T. BEARS
 N 5° E, 29.8', A 28" OAK B.T. BEARS S 43° E,
 24.3', A 12" OAK B.T. BEARS S 61° 23' W, 75.7',
 AND A 12" MADRONE B.T. N 24° W, 8.0'.

3/4" I.P. FROM WHICH AN 18" OAK B.T. BEARS
 S 8° E, 28.5', A 24" OAK B.T. BEARS N 40° 22' W,
 22.8', AND A 30" OAK B.T. BEARS SOUTH, 68.5'
 TO FACE.



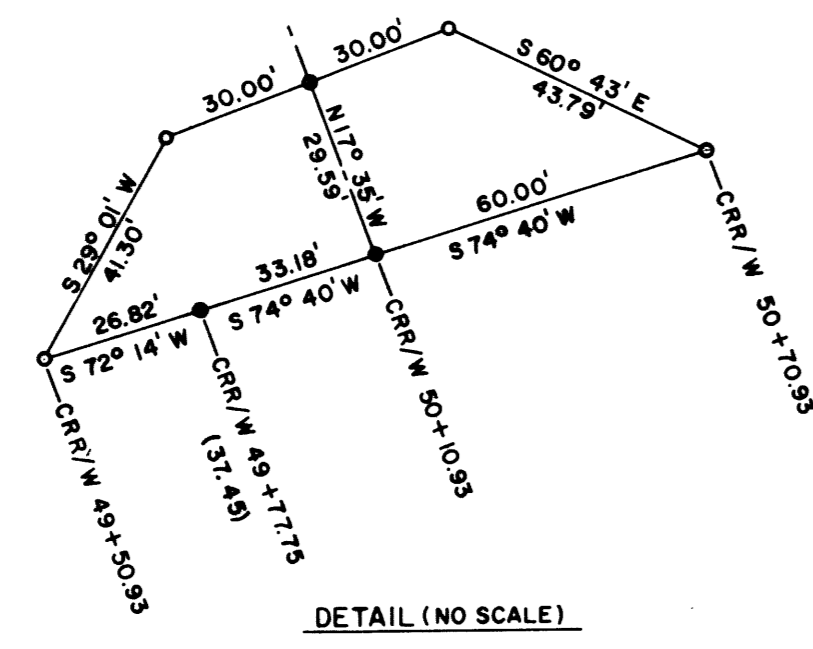
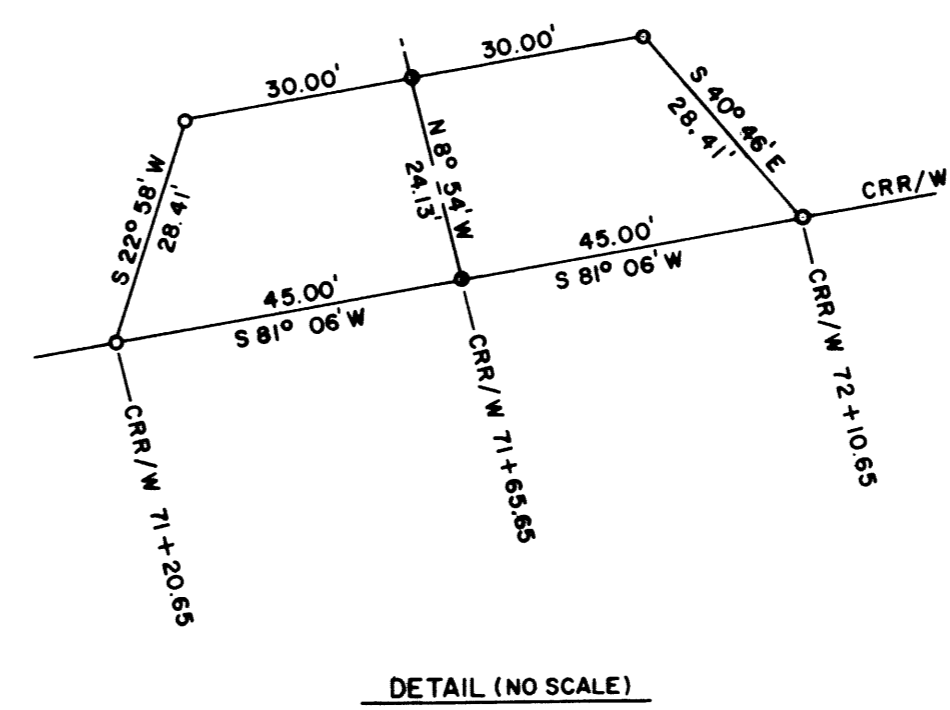
**TRACT SURVEY FOR GARDEN VALLEY
 WEST, OREGON LTD. PROPERTY**
 IN SECTIONS 28, 29 T 26 S, R 6 W, W.M.
 DOUGLAS COUNTY, OREGON
 APRIL 24, 1968
 BRUCE A. SHANER, ENGINEER



- LEGEND**
- CORNERS FOUND - 5/8 IRON ROD UNLESS NOTED
 - CORNERS SET - 5/8 IRON ROD
 - CORNERS COMPUTED BUT NOT SET
 - Sec CORNERS - D.L.C. CORNERS

NOTE:
 BOTH ACCESS ROADS 60.00' WIDE, 30.00' EACH SIDE
 OF E UNLESS OTHERWISE SHOWN.

NOTE:
 THE PORTION OF THIS MAP SHOWN IN () TO
 SHOW CHANGE IN TRACT 17 & 19, WAS ADDED
 THIS 25TH DAY OF FEBRUARY, 1969.
 Bruce A. Shaner
 BRUCE A. SHANER



WSW Cor. D.L.C. No. 40
 BRASS CAP SET C.S. 1956, FROM WHICH
 A 12" OAK B.T. BEARS NORTH, 2.0' AND
 A 16" OAK B.T. BEARS S 0° W, 19.0'.

1-1-68