

D. L.C. No 61

1" I.P. (COLE'S No. 11) FROM WHICH A 20" OAK B.T. W/SCRIBES VISIBLE BEARS S 45° E, 21.5' (RECORD 20.0') AND AN 18" OAK B.T. NOW DOWN AND ROTTEN, BEARS N 20° E, 16.0' TO STUMP HOLE.

1" I.P. (SET BY ROYER) FROM WHICH A 24" OAK B.T. W/SCRIBES VISIBLE BEARS S 10° E, 14.4' AND AN 18" OAK B.T. NOW DOWN AND DECAYED, BEARS N 18° W, 18.2'. (THESE ARE THE SAME B.T.'S MARKED BY COLE FOR HIS No. 11 Cor.).

DETAIL (NO SCALE)

(COLE'S RECORD S 88° 06' W, 2598.2')

S 88° 10' W, 2578.52' (R.H.O.T. RECORD WEST 2599.74')

S.W. Cor. D.L.C. 61
BRASS CAP SET BY C.S., 1961, FROM WHICH A 24" OAK B.T. BEARS S 74° E, 37.5' AND A 17" DOUGLAS FIR B.T. BEARS N 86° W, 45.0'. (RECORD WAS 46.0')

3/4" I.P. (COLE'S No. 17)

N 1° 27' E 70.04'

1 1/4" BUGGY AXLE

1 1/4" BUGGY AXLE

1 1/4" BUGGY AXLE

N 0° 02' E, 598.05'

N 0° 02' E, 598.05'

N 0° 02' E, 598.05'

N 0° 02' E, 598.05'

N 0° 02' E, 598.05'

N 0° 02' E, 598.05'

N 0° 02' E, 598.05'

N 0° 02' E, 598.05'

N 0° 02' E, 598.05'

N 0° 02' E, 598.05'

N 0° 02' E, 598.05'

N 0° 02' E, 598.05'

N 0° 02' E, 598.05'

N 0° 02' E, 598.05'

N 0° 02' E, 598.05'

N 0° 02' E, 598.05'

N 0° 02' E, 598.05'

N 0° 02' E, 598.05'

N 0° 02' E, 598.05'

N 0° 02' E, 598.05'

N 0° 02' E, 598.05'

N 0° 02' E, 598.05'

N 0° 02' E, 598.05'

N 0° 02' E, 598.05'

N 0° 02' E, 598.05'

N 0° 02' E, 598.05'

N 0° 02' E, 598.05'

N 0° 02' E, 598.05'

N 0° 02' E, 598.05'

N 0° 02' E, 598.05'

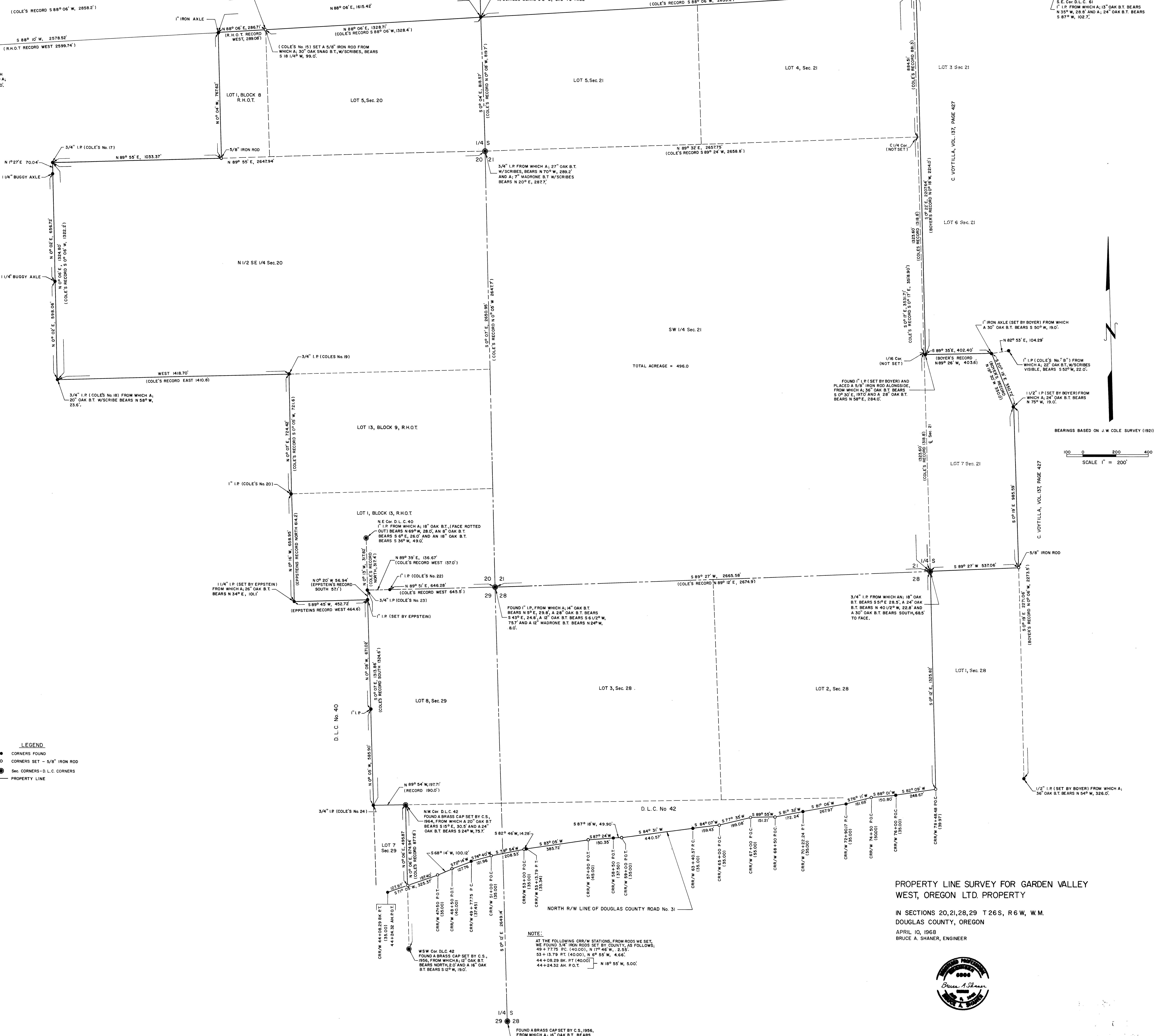
N 0° 02' E, 598.05'

N 0° 02' E, 598.05'

N 0° 02' E, 598.05'

LEGEND

- CORNERS FOUND
- CORNERS SET - 5/8" IRON ROD
- Sec. CORNERS - D.L.C. CORNERS
- PROPERTY LINE



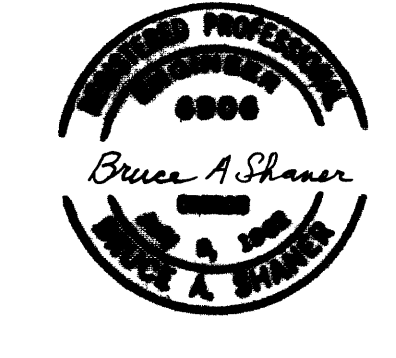
TOTAL ACREAGE = 496.0

BEARINGS BASED ON J.W. COLE SURVEY (1921)

SCALE 1" = 200'

PROPERTY LINE SURVEY FOR GARDEN VALLEY WEST, OREGON LTD. PROPERTY

IN SECTIONS 20, 21, 28, 29 T 26 S, R 6 W, W.M.
DOUGLAS COUNTY, OREGON
APRIL 10, 1968
BRUCE A. SHANER, ENGINEER



NOTE:
AT THE FOLLOWING CRW STATIONS, FROM RODS WE SET, WE FOUND 3/4" IRON RODS SET BY COUNTY, AS FOLLOWS:
49+77.75 P.C. (40.00) N 77° 46' W, 2.55'
53+13.79 P.C. (40.00) N 6° 55' W, 4.66'
44+08.29 B.K. P.T. (40.00) N 18° 55' W, 5.00'
44+24.32 A.H. P.T. N 18° 55' W, 5.00'

FOUND A BRASS CAP SET BY C.S., 1956, FROM WHICH A 16" OAK B.T. BEARS S 42° W, 24.0' AND A 12" OAK B.T. BEARS S 57° E, 34.0'.