

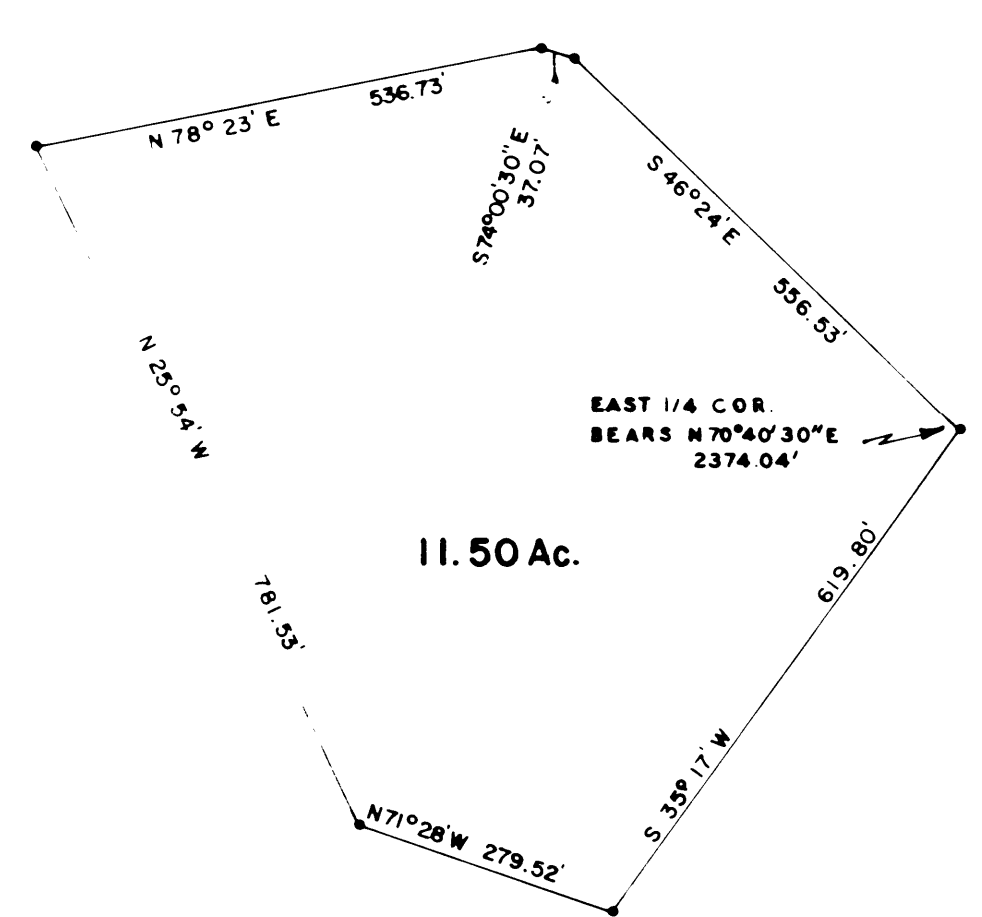
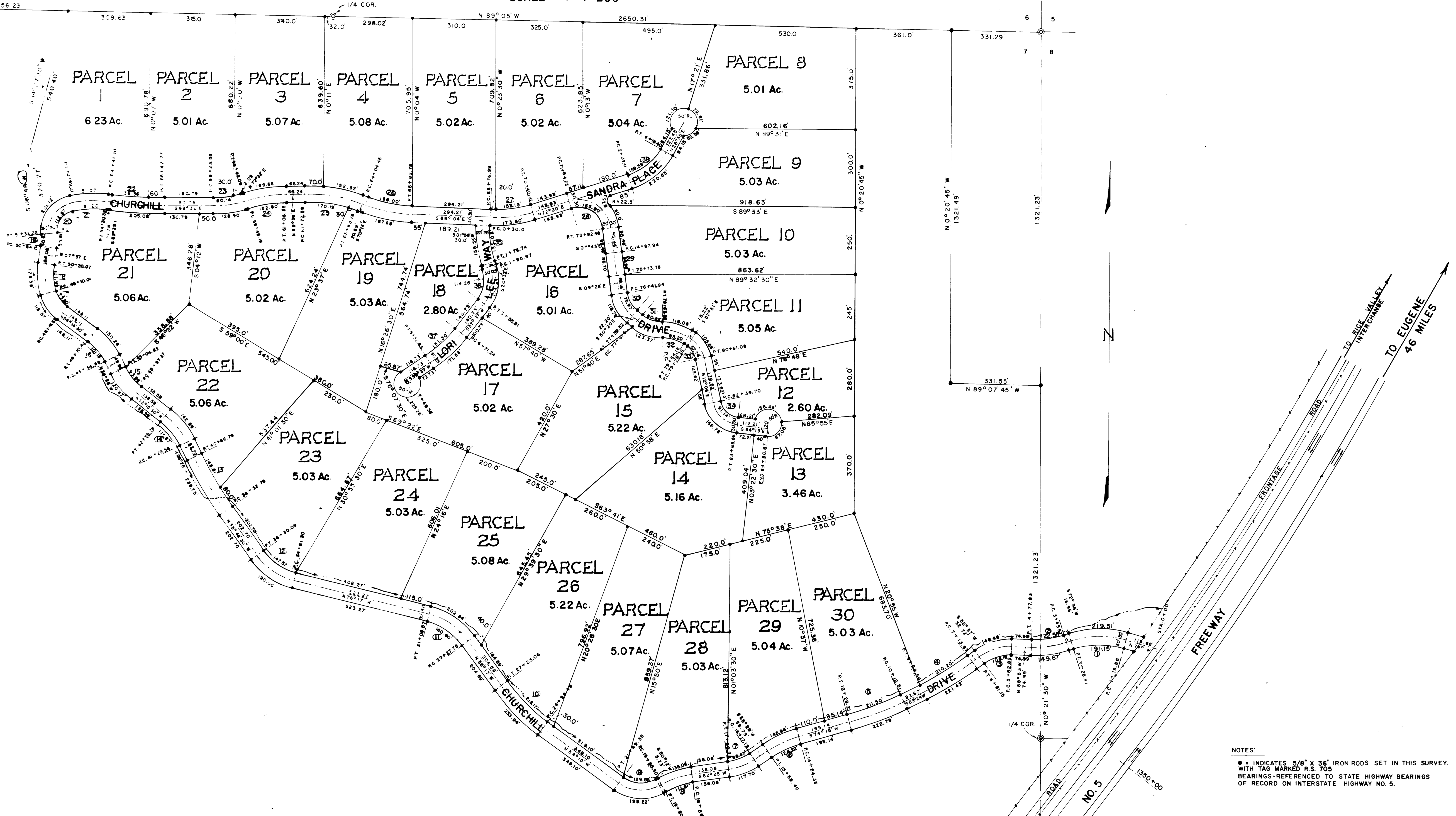
RICE HILL ESTATES

PART OF A 1600 ACRE PLANNED DEVELOPMENT

OWNERS AND DEVELOPERS:
D.M. WEBB AND JAMES R. De BAUN

SITUATE IN SECTION 7, TOWNSHIP 24 SOUTH, RANGE 5 WEST, WILLAMETTE MERIDIAN, DOUGLAS COUNTY, OREGON

DATE: MARCH 2, 1968
SCALE = 1" = 200'



NOTES:
• INDICATES 5/8" x 3/8" IRON RODS SET IN THIS SURVEY.
WITH TAG MARKED R.S. 705
BEARINGS REFERENCED TO STATE HIGHWAY BEARINGS
OF RECORD ON INTERSTATE HIGHWAY NO. 5.

CURVE DATA					
① Δ = 33°24'	② Δ = 18°31'	③ Δ = 38°30'	④ Δ = 10°47'	⑤ Δ = 10°51'	⑥ Δ = 18°46'
D = 185'	D = 145'	D = 145'	D = 85'	D = 85'	D = 145'
R = 358.10'	R = 409.26'	R = 190.99'	R = 1145.92'	R = 1145.92'	R = 409.26'
T = 107.43'	T = 66.71'	T = 66.70'	T = 108.15'	T = 108.85'	T = 67.43'
L = 208.75'	L = 132.24'	L = 128.33'	L = 215.67'	L = 217.0'	L = 134.05'
⑦ Δ = 26°56'	⑧ Δ = 22°13'	⑨ Δ = 65°33'	⑩ Δ = 17°58'	⑪ Δ = 40°00'	⑫ Δ = 40°30'30"
D = 26°	D = 18°	D = 40°	D = 8°	D = 22°	D = 24°
R = 220.37'	R = 318.31'	R = 143.24'	R = 716.20'	R = 260.44'	R = 238.73'
T = 82.77'	T = 62.20'	T = 92.22'	T = 113.22'	T = 94.79'	T = 88.09'
L = 103.59'	L = 123.43'	L = 163.88'	L = 224.58'	L = 181.82'	L = 168.79'
⑬ Δ = 09°21'30"	⑭ Δ = 25°50'30"	⑮ Δ = 25°47'30"	⑯ Δ = 27°46'30"	⑰ Δ = 37°23'30"	⑱ Δ = 24°28'
D = 49'	D = 20°	D = 24°	D = 24°	D = 40°	D = 22.18°
R = 1432.40'	R = 286.43'	R = 238.73'	R = 238.73'	R = 143.24'	R = 258.88'
T = 117.24'	T = 54.66'	T = 54.66'	T = 59.03'	T = 48.47'	T = 56.13'
L = 234.0'	L = 129.20'	L = 107.46'	L = 115.73'	L = 93.48'	L = 110.08'
⑲ Δ = 14°25'	⑳ Δ = 84°16'	㉑ Δ = 19°03'	㉒ Δ = 08°03'	㉓ Δ = 17°56'	㉔ Δ = 16°07'
D = 39°	D = 53.68°	D = 13.6°	D = 3°	D = 15°	D = 10°
R = 190.99'	R = 106.74'	R = 424.52'	R = 1908.86'	R = 381.91'	R = 572.96'
T = 24.16'	T = 96.59'	T = 71.23'	T = 100.94'	T = 60.27'	T = 81.12'
L = 48.07'	L = 156.99'	L = 141.11'	L = 201.67'	L = 119.53'	L = 161.17'
㉕ Δ = 21°50'7"	㉖ Δ = 17°50'	㉗ Δ = 19°36'	㉘ Δ = 99°57'	㉙ Δ = 1°43'	㉚ Δ = 40°54'
D = 10°	D = 10°	D = 12°	D = 48°	D = 2°	D = 42°
R = 572.96'	R = 572.96'	R = 477.47'	R = 119.37'	R = 2864.79'	R = 136.42'
T = 108.79'	T = 89.89'	T = 82.47'	T = 142.15'	T = 42.94'	T = 50.87'
L = 211.17'	L = 178.33'	L = 163.33'	L = 208.23'	L = 85.84'	L = 97.38'
㉛ Δ = 40°48'	㉜ Δ = 33°17'	㉝ Δ = 45°45'	㉞ Δ = 72°13'	㉟ Δ = 22°28'	㊱ Δ = 57°49'
D = 40°	D = 33.07°	D = 56°	D = 15.31°	D = 15.31°	D = 40°
R = 143.24'	R = 173.24'	R = 102.31'	R = 102.31'	R = 574.30'	R = 143.24'
T = 53.27'	T = 51.78'	T = 43.16'	T = 74.63'	T = 74.34'	T = 79.10'
L = 102.0'	L = 100.64'	L = 81.70'	L = 128.96'	L = 146.74'	L = 144.54'
㊲ Δ = 19°22'	㊳ Δ = 43°45'	㊴ Δ = 12°	㊵ Δ = 24°	㊶ Δ = 47°47'	㊷ Δ = 81°47'
D = 12°	D = 24°	D = 12°	D = 24°	D = 258.73'	D = 95.85'
R = 477.47'	R = 258.73'	R = 81.47'	R = 182.29'		
L = 161.39'	L = 182.29'				

GERALD D. RILEY
SURVEYOR

SURVEYED BY: GERALD D. RILEY, R.S. 705,
1890 REGINA WAY,
GRANTS PASS, OREGON.

RM 1-65

MAP FILE RM 1-65

MAP FILE RM 1-65

RM 1-65 11/100