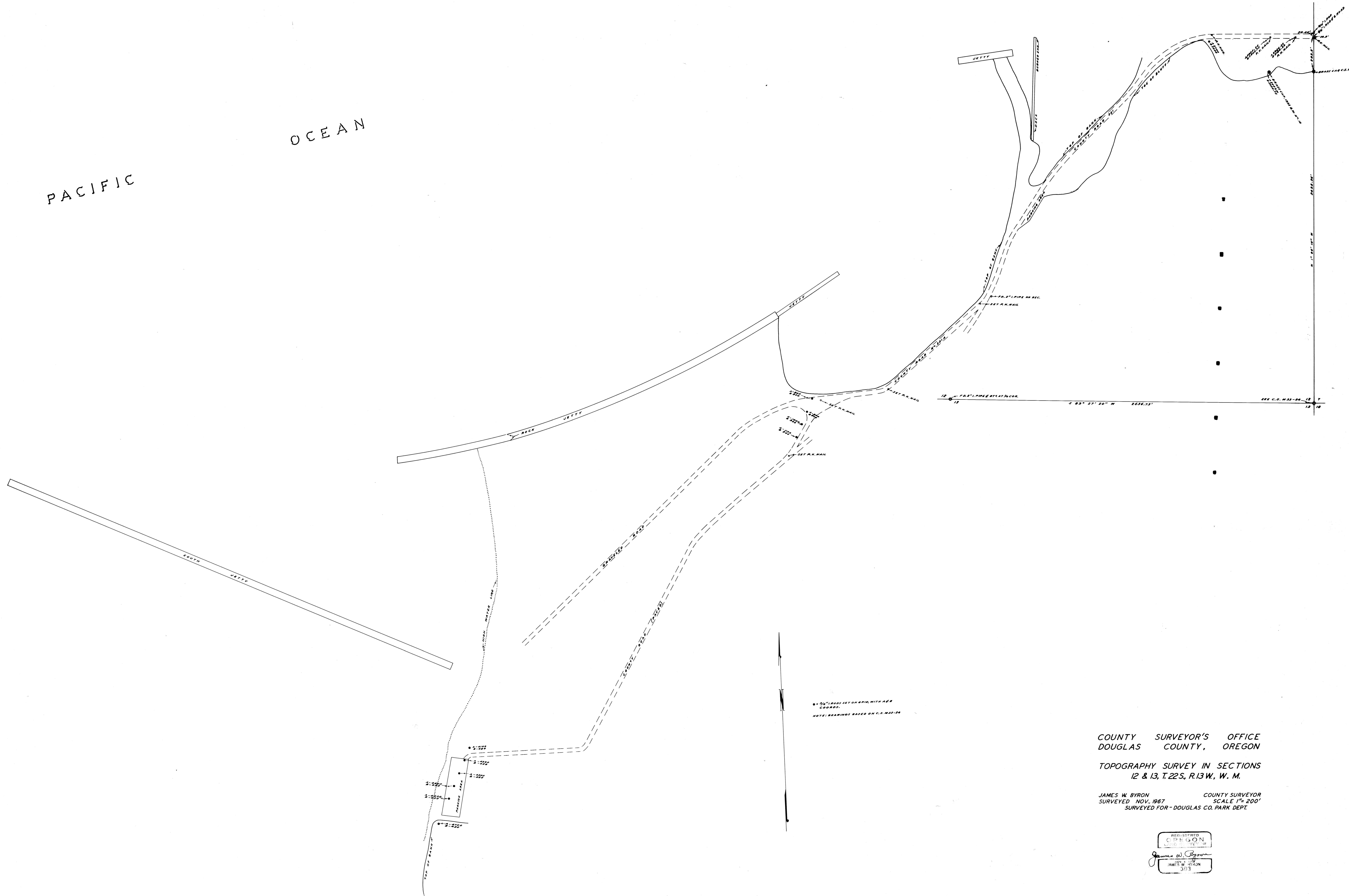


PACIFIC

OCEAN



• 30' IRON SET ON SPIG, WITH A&B
 COORDS.
 NOTE: BEARINGS BASED ON C.S. 103-24

COUNTY SURVEYOR'S OFFICE
 DOUGLAS COUNTY, OREGON

TOPOGRAPHY SURVEY IN SECTIONS
 12 & 13, T.22S., R.13W., W. M.

JAMES W. BYRON COUNTY SURVEYOR
 SURVEYED NOV., 1967 SCALE 1"=200'
 SURVEYED FOR - DOUGLAS CO. PARK DEPT.

REGISTERED
 CIPHEON
 BYRON
 JAMES W. BYRON
 3013