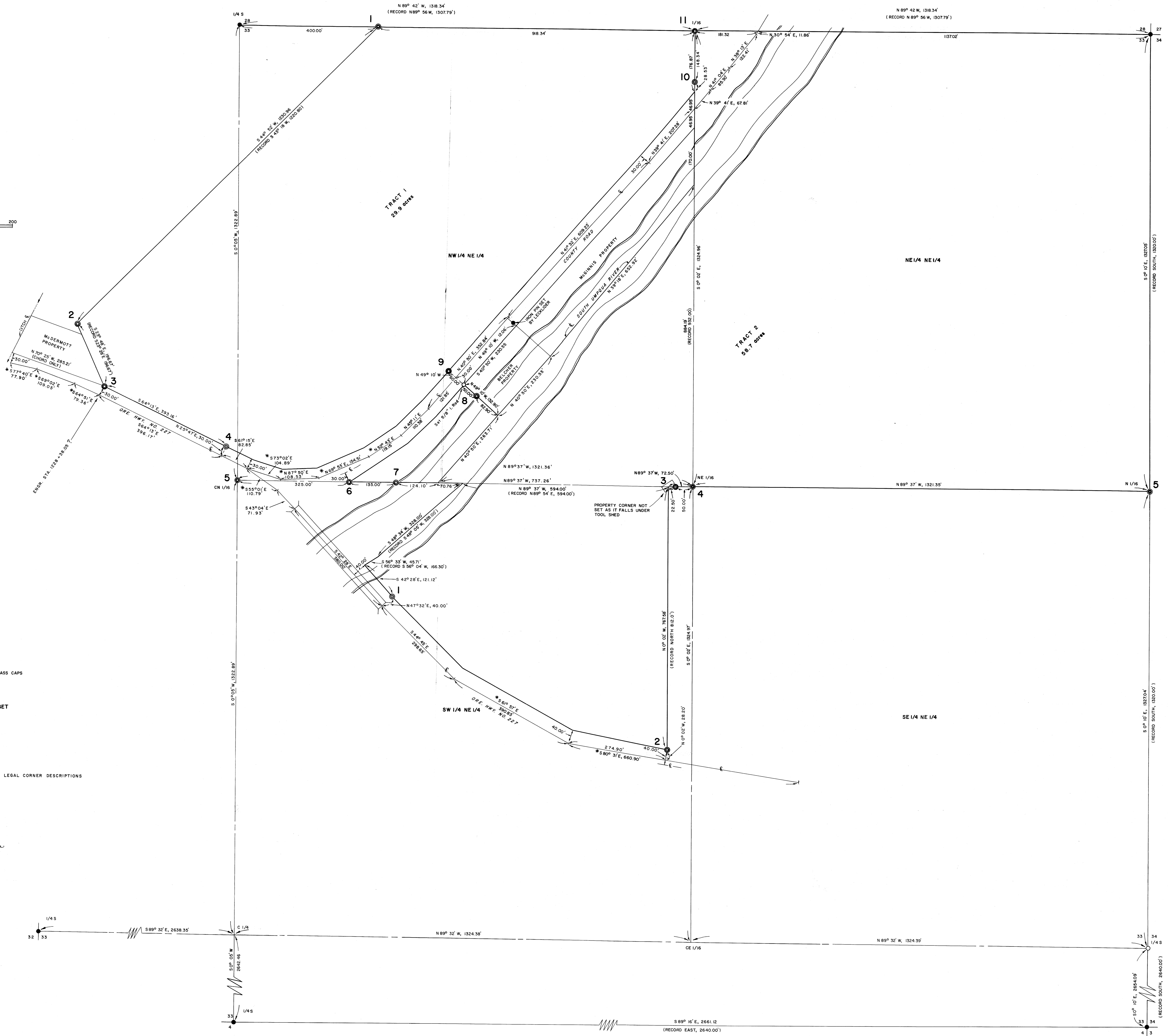
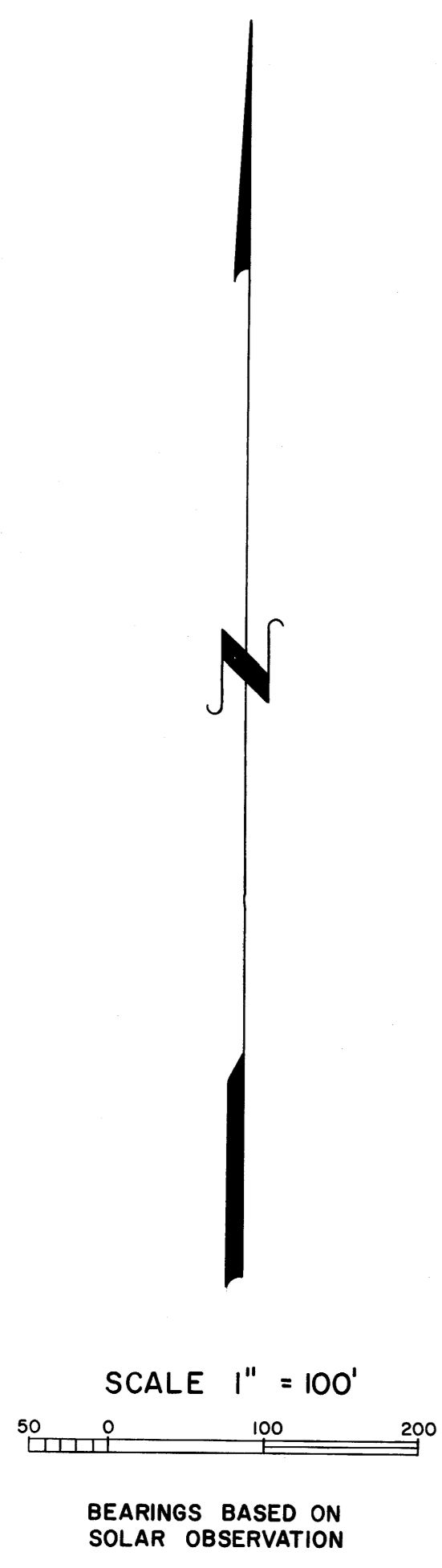


# TILLER ADMINISTRATIVE SITE PROPERTY SURVEY FOR UMPQUA NATIONAL FOREST

IN Sec 33, T 30S, R 2W, W.M., DOUGLAS COUNTY, OREGON



- LEGEND**
- CORNERS FOUND
  - ⊙ CORNER MONUMENTS SET  
(MONUMENTS SET ARE 2 1/2" BRASS CAPS SET IN 6" CONCRETE POSTS)
  - OTHER CORNERS SET  
(AS DESCRIBED)
  - ⊥ CORNER COMPUTED, NOT SET

- NOTES:**
1. \* IRREGULAR CURVE
  2. SEE ADDENDUM SHEET FOR LEGAL CORNER DESCRIPTIONS

*Bruce A. Shafer*

OCTOBER 20, 1967

33-1-44  
 33-1-45  
 33-1-46

33-1-43  
 33-1-44  
 33-1-45  
 33-1-46