

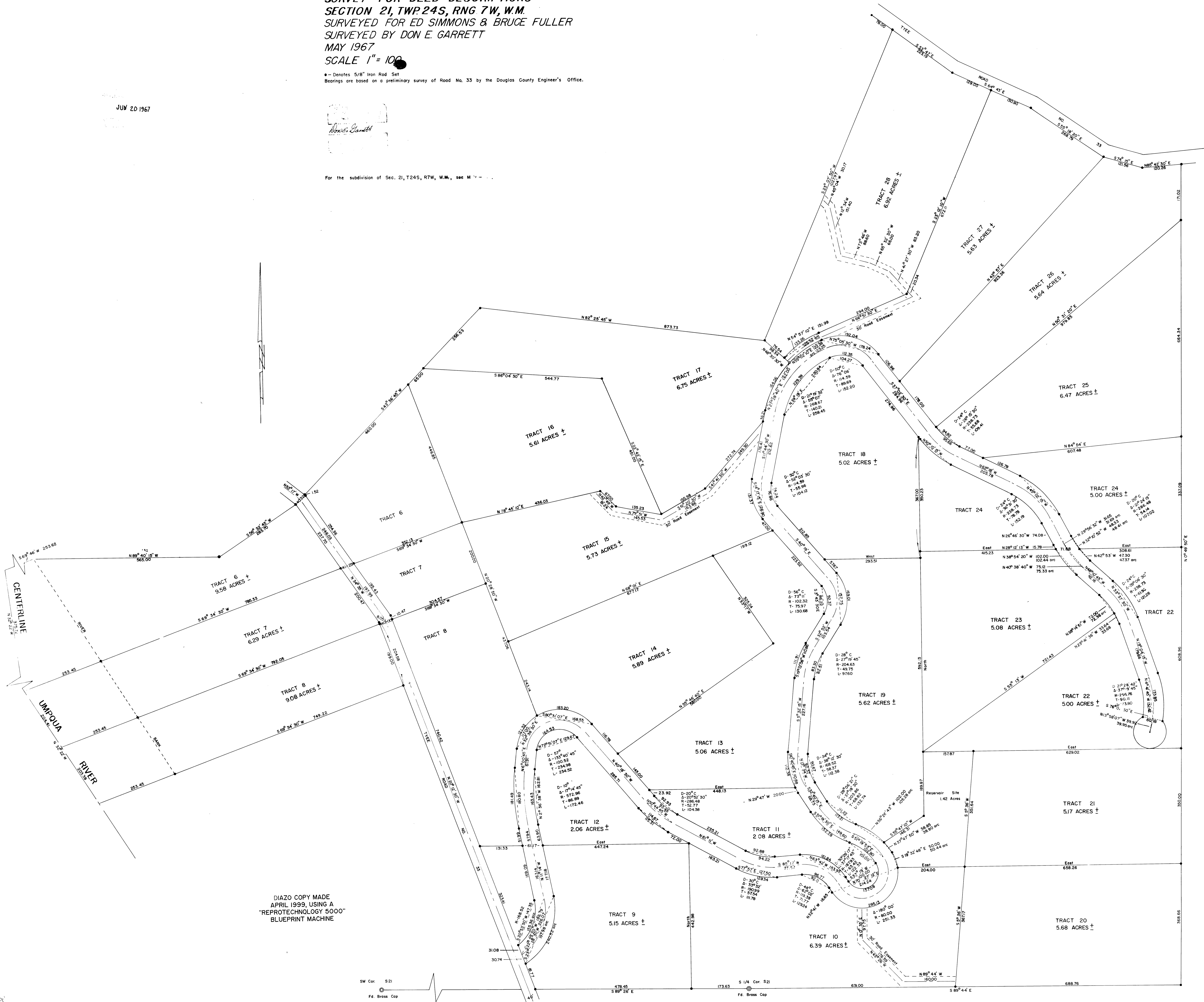
SURVEY FOR DEED DESCRIPTIONS
SECTION 21, TWP. 24S, RNG 7W, W.M.
SURVEYED FOR ED SIMMONS & BRUCE FULLER
SURVEYED BY DON E. GARRETT
MAY 1967
SCALE 1" = 100'

• - Denotes 5/8" Iron Rod Set
 Bearings are based on a preliminary survey of Road No. 33 by the Douglas County Engineer's Office.

JUN 20 1967

Don E. Garrett

For the subdivision of Sec. 21, T24S, R7W, W.M., sec M -



DIAZO COPY MADE
 APRIL 1999, USING A
 "REPROTECHNOLOGY 5000"
 BLUEPRINT MACHINE

SW Cor. S21
 Fd. Brass Cop

S 1/4 Cor. S21
 Fd. Brass Cop

S 89° 44' E

18-1 MS

18-1 MS