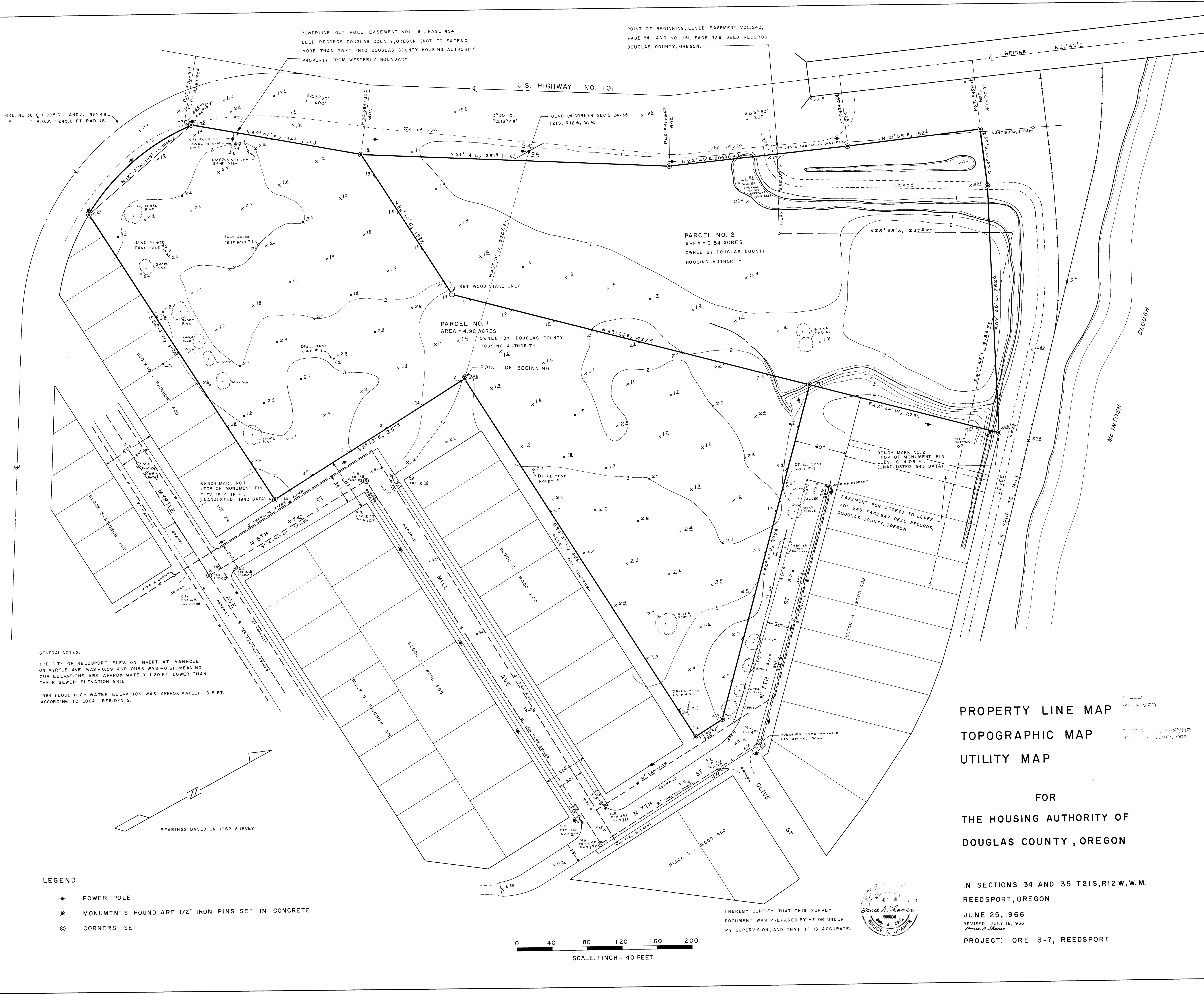


POWERLINE GUY POLE EASEMENT VOL. 181, PAGE 494  
 DEED RECORDS DOUGLAS COUNTY, OREGON. (NOT TO EXTEND  
 MORE THAN 25 FT. INTO DOUGLAS COUNTY HOUSING AUTHORITY  
 PROPERTY FROM WESTERLY BOUNDARY.

POINT OF BEGINNING, LEVEE EASEMENT VOL. 243,  
 PAGE 841 AND VOL. 151, PAGE 438 DEED RECORDS,  
 DOUGLAS COUNTY, OREGON.



GENERAL NOTES:  
 THE CITY OF REEDSPORT ELEV. ON INVERT AT MANHOLE  
 ON MYRTLE AVE. WAS +0.59 AND OURS WAS -0.61, MEANING  
 OUR ELEVATIONS ARE APPROXIMATELY 1.20 FT. LOWER THAN  
 THEIR SEWER ELEVATION GRID.  
 1964 FLOOD HIGH WATER ELEVATION WAS APPROXIMATELY 10.8 FT.  
 ACCORDING TO LOCAL RESIDENTS.

- LEGEND
- ➔ POWER POLE
  - ⊙ MONUMENTS FOUND ARE 1/2" IRON PINS SET IN CONCRETE
  - ⊙ CORNERS SET

0 40 80 120 160 200  
 SCALE: 1 INCH = 40 FEET

PROPERTY LINE MAP  
 TOPOGRAPHIC MAP  
 UTILITY MAP  
 FOR  
 THE HOUSING AUTHORITY OF  
 DOUGLAS COUNTY, OREGON

IN SECTIONS 34 AND 35 T21S, R12W, W.M.  
 REEDSPORT, OREGON  
 JUNE 25, 1966  
 REVISED JULY 18, 1966  
 PROJECT: ORE 3-7, REEDSPORT

I HEREBY CERTIFY THAT THIS SURVEY  
 DOCUMENT WAS PREPARED BY ME OR UNDER  
 MY SUPERVISION, AND THAT IT IS ACCURATE.



FILED  
 RECEIVED  
 COUNTY SURVEYOR  
 DOUGLAS COUNTY, ORE.