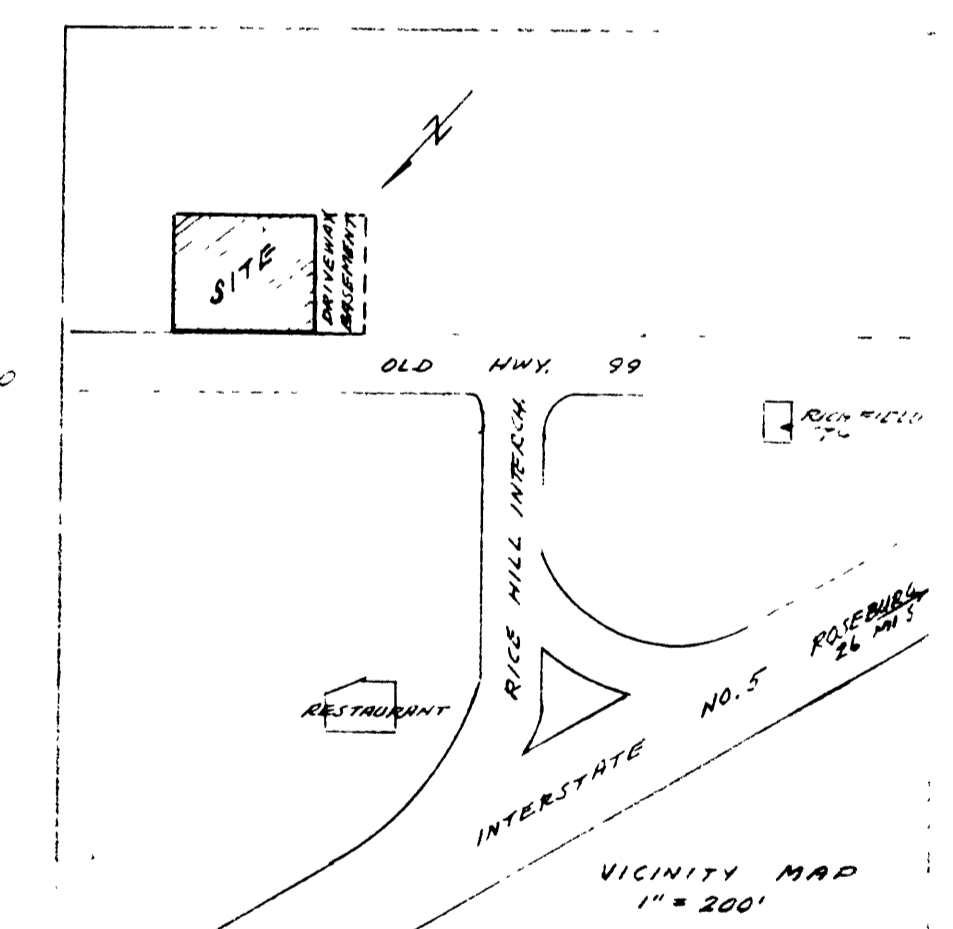
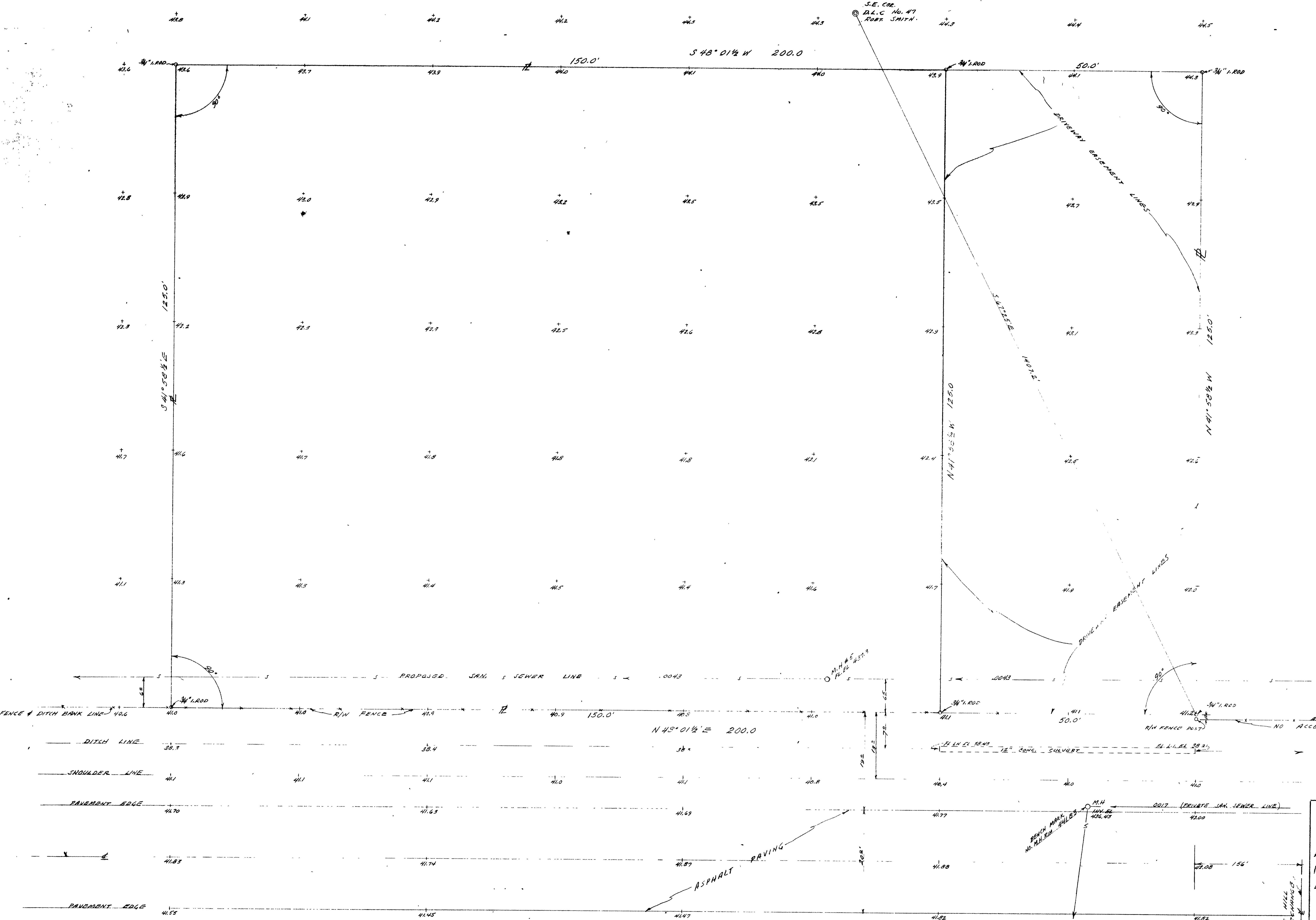


S.E. COR.
D.L.C. No. 47
ROBT. SMITH.



**SHELL OIL COMPANY
STATION SITE
AT RICE HILL INTERCHANGE
IN SECTION 28, T23S, R5 W. W.M.**

ENGINEER - W.S. BARNES
MAY 1965
SCALE 1/8" = 1'

COUNTY ENGINEER
COUNTY CLERK