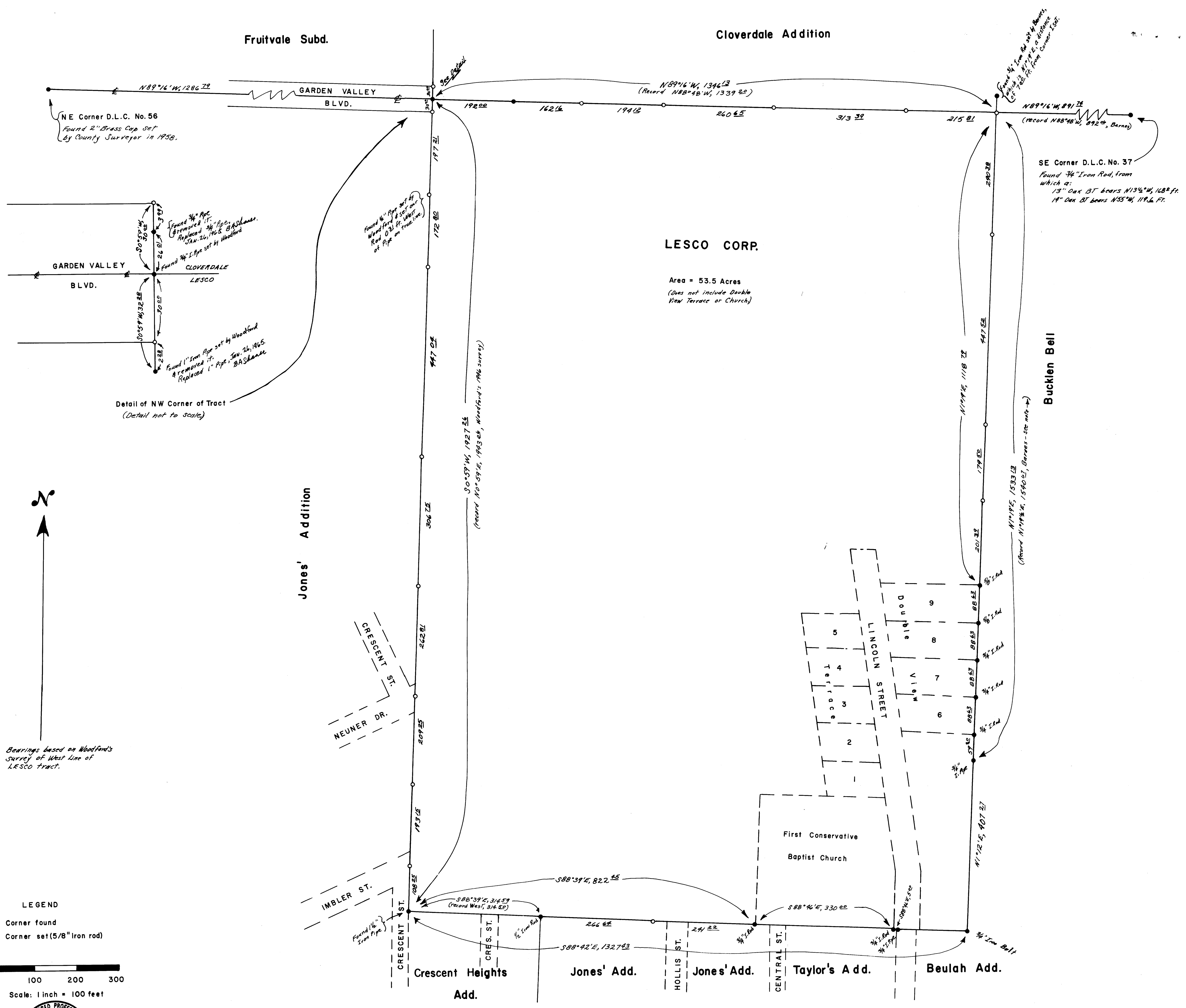


BOUNDARY SURVEY OF LESCO CORP. TRACT IN NW 1/4, SEC. 18, T27S, R5W, W.M.

ROSEBURG, OREGON



LESCO CORP.

Area = 53.5 Acres
(Does not include Double View Terrace or Church)

Detail of NW Corner of Tract
(Detail not to scale)

Bearings based on Woodford's Survey of West Line of LESCO Tract.

LEGEND

- Corner found
- Corner set (5/8" Iron rod)

Scale: 1 inch = 100 feet



FILED
RECEIVED
JAN 18 1964
COUNTY SURVEYOR
DOUGLAS COUNTY, ORE.

Surveyed January, 1965