

COUNTY SURVEYOR'S OFFICE
DOUGLAS COUNTY, OREGON

SURVEY TO MONUMENT PROPERTY CORNERS
SECTION 1, T.20S., R.12W., W.M.

FRED M. DARBY COUNTY SURVEYOR
SURVEYED SEPT. 3, 1964 BY
MILO E. GODFREY - DEPUTY SCALE 1" = 200'
SURVEYED FOR M. M. BEERY

REGISTERED
OREGON
LAND SURVEYOR
Milo E. Godfrey
MAY 13, 1960
MILO E. GODFREY
496

NOTE: BEARINGS BASED ON N27°23' PER GOK NOTES.

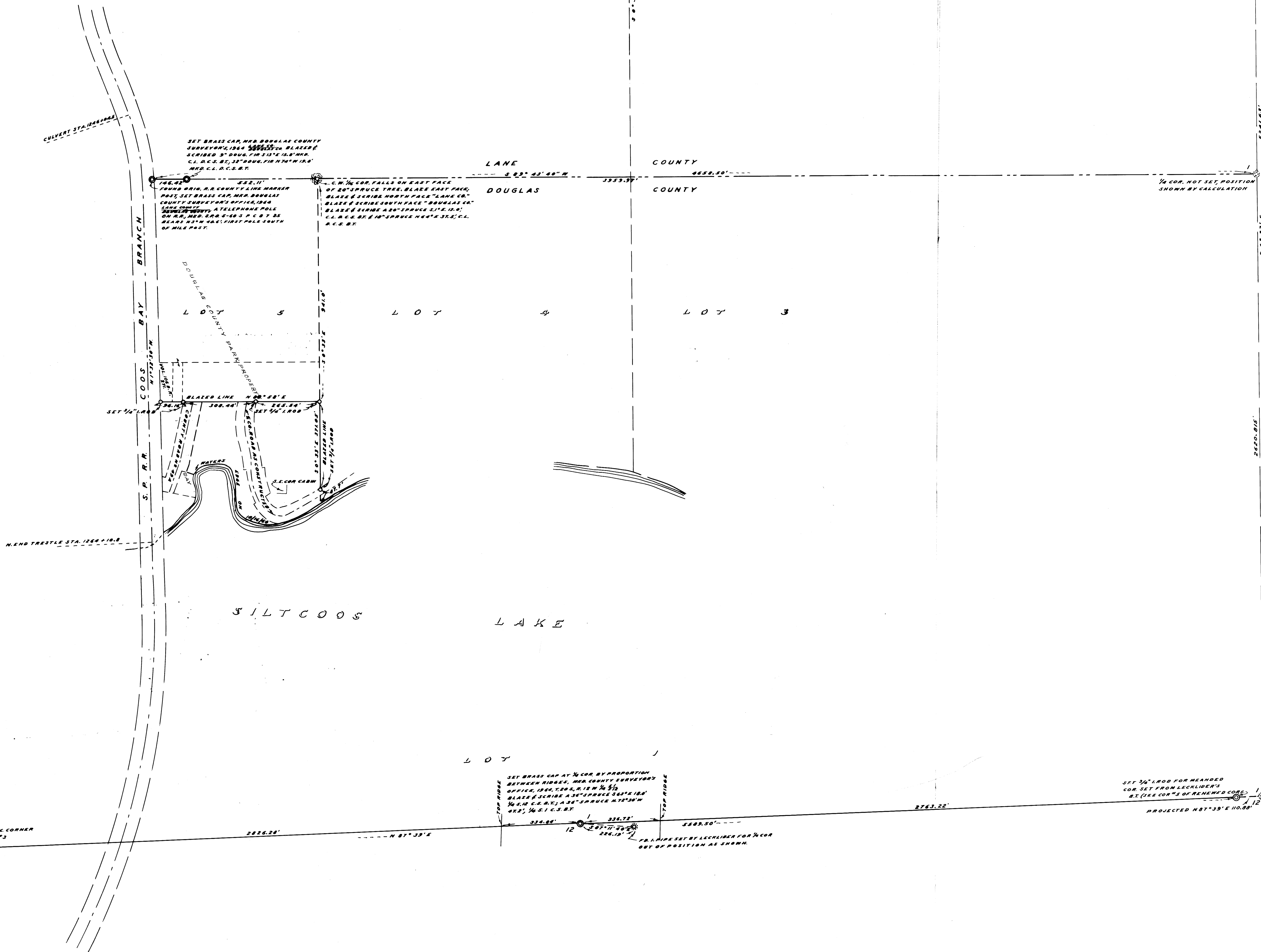
NOTE: THIS SECTION HAS NEVER BEEN COMPLETELY SURVEYED BY THE BOP, THEREFORE THE RULE FOR SUBDIVISION OF FRACTIONAL SECTIONS AS FOUND IN "CLASSIFICATION OF SURVEYING BOUNDARIES" WAS USED TO DETERMINE THE LOT LINE BETWEEN LOTS 4 & 5.

36
1/4 COR. NOT SET
PROJECTED IN FROM
GOK NOTES.

WEST 2640.0' PER GOK NOTES

RENEW SEC. COR. FROM S. D. R. L. SET
BRASS CAP. M.D. DOUGLAS COUNTY
SURVEYOR'S OFFICE 1964. SET
BRASS AND SCREW. 1 1/2" DIA.
36" DOUG. FIR N 87° 30' E 131' 11" H.A. TIDE
10" W. S. I. C. S. 1/2" DOUG. FIR S. 80° 10' W
M.D. T. 20S. R. 12W. S. E. C. 1. 36" DOUG. FIR
3.5" W. I. C. S. M.D. T. 20S. R. 12W. S. E. C. 1. 36"
NO TREE AVAILABLE TO M. T. COR. 11
ON NOSE OF SMALL VERY STEEP SLOPE
SLOPING N.E.

36
1 1/2
0



1/4 COR. NOT SET, POSITION
SHOWN BY CALCULATION

SET BRASS CAP AT 1/4 COR. BY PROPORTION
BETWEEN RIDGES. M.D. COUNTY SURVEYOR'S
OFFICE, 1964. COR. 12, R. 12W. S. 20S.
BLADE & SCREW 1 1/2" DIA. 36" DOUG. FIR
10" W. S. I. C. S. 1/2" DOUG. FIR S. 80° 10' W
M.D. T. 20S. R. 12W. S. E. C. 1. 36" DOUG. FIR
3.5" W. I. C. S. M.D. T. 20S. R. 12W. S. E. C. 1. 36"

SET 36" IRON FOR BEARDED
COR. SET FROM LOCKWOOD'S
ST. (SEE COR. 5 OF RENEWED COR.)
PROJECTED N 87° 30' E 110.00'

FB 1 1/2" IRON PIPE AT SEC CORNER
SEE RENEWED COR. 3

FB 1 1/2" IRON PIPE SET BY LOCKWOOD FOR 1/4 COR
OUT OF POSITION AS SHOWN