

BULK SALES STATION-TEXACO

ROSEBURG, OREGON

20 FT. ELEV. GRID.

ENGINEER- W. S. BARNES

AUG. 1964

SCALE 1" = 10'

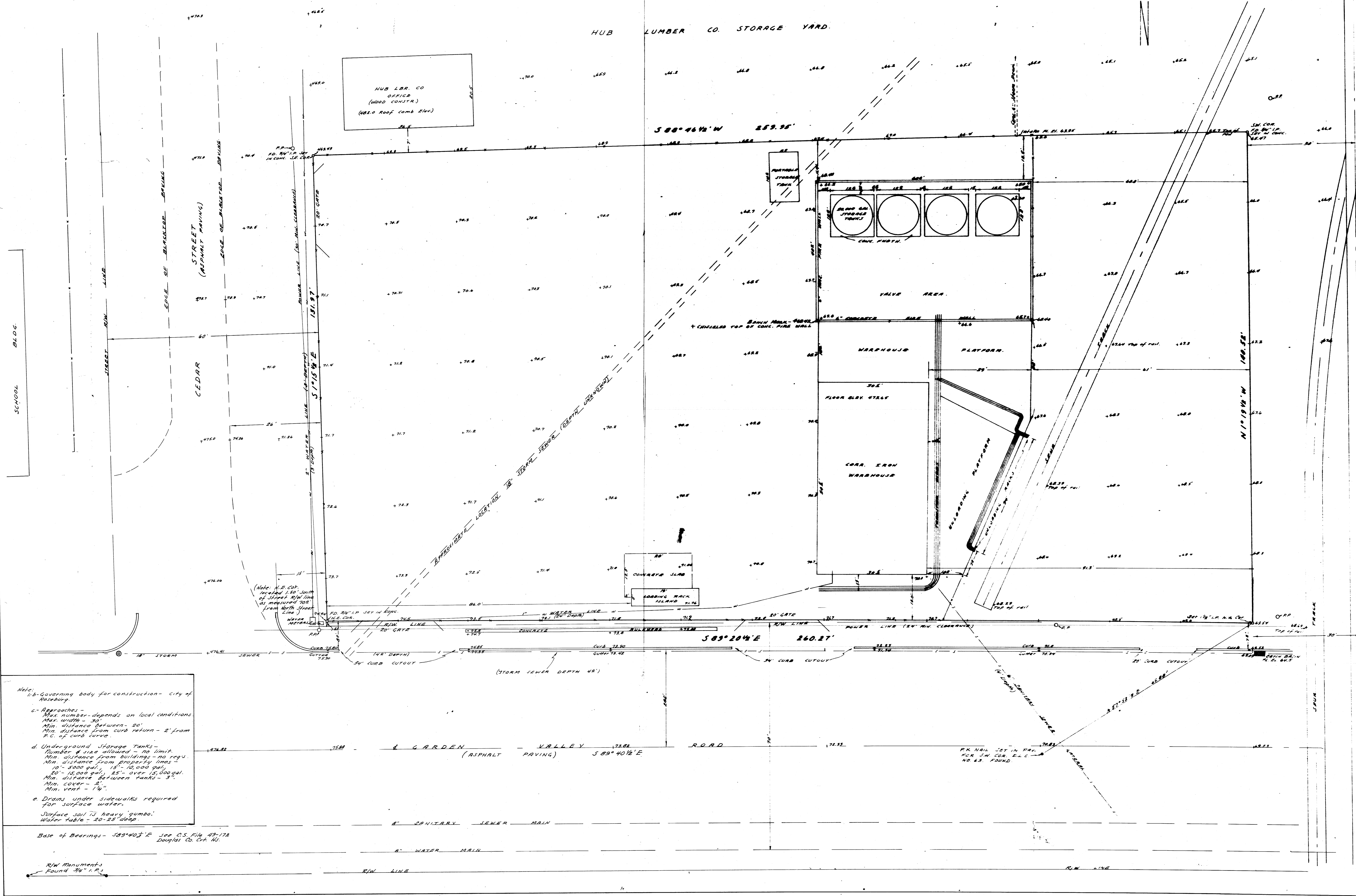
HUB LUMBER CO. STORAGE YARD.

HUB LUMBER CO. OFFICE
(WOOD CONSTR.)
(WOOD ROOF CORR. ELEV.)

$S 88^{\circ} 46' 14'' N$ 253.98'

$S 89^{\circ} 20' 44'' E$ 260.27'

$S 89^{\circ} 40' 12'' E$



Note:
 1. Governing body for construction - city of Roseburg.
 2. Approaches -
 Max. number - depends on local conditions
 Max. width - 30'
 Min. distance between - 20'
 Min. distance from curb return - 2' from P.C. of curb curve.
 3. Underground Storage Tanks -
 Number & size allowed - no limit.
 Min. distance from buildings - no req.
 Min. distance from property lines -
 10' - 5,000 gal., 15' - 10,000 gal.,
 20' - 15,000 gal., 25' - over 15,000 gal.
 Min. distance to sewer main - 3'.
 Min. cover - 3".
 Min. vent - 1 1/2".
 4. Drains under sidewalks required for surface water.
 Surface soil is heavy 'gumbo'.
 Water table - 20-25' deep.

Base of Bearings - $S 89^{\circ} 40' 12'' E$ See O.S. 214, 25-112 Douglas Co. Plat. No.

R/W Monuments Found 3/4" 1/2"

FILED
 RECEIVED
 SEP 2 1964
 COUNTY SURVEYOR
 DOUGLAS COUNTY, ORE.

