

# SURVEY for K.W.FORD

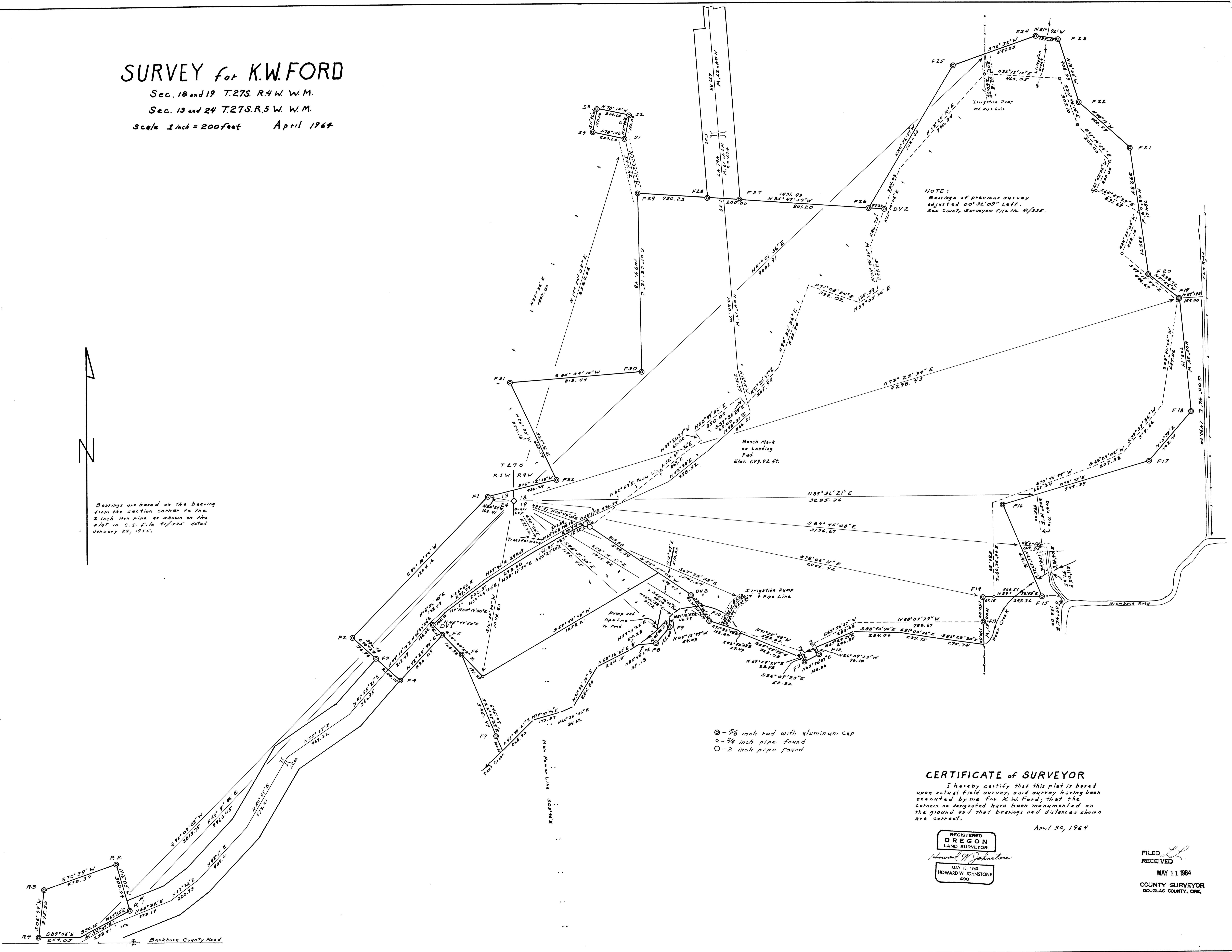
Sec. 18 and 19 T.27S. R.4W. W.M.

Sec. 13 and 24 T.27S. R.5W. W.M.

Scale 1 inch = 200 feet April 1964



Bearings are based on the bearing from the section corner to the 2 inch iron pipe as shown on the plat in C.S. file 41/335 dated January 29, 1955.



NOTE:  
Bearings of previous survey adjusted 00°32'09" Left.  
See County Surveyor file No. 41/335.

- ⊙ - 3/8 inch rod with aluminum cap
- - 3/4 inch pipe found
- - 2 inch pipe found

### CERTIFICATE of SURVEYOR

I hereby certify that this plat is based upon actual field survey, said survey having been executed by me for K.W. Ford; that the corners so designated have been monumented on the ground and that bearings and distances shown are correct.

April 30, 1964

REGISTERED  
OREGON  
LAND SURVEYOR  
*Howard W. Johnstone*  
MAY 13, 1960  
HOWARD W. JOHNSTONE  
498

FILED  
RECEIVED  
MAY 11 1964  
COUNTY SURVEYOR  
DOUGLAS COUNTY, ORE.