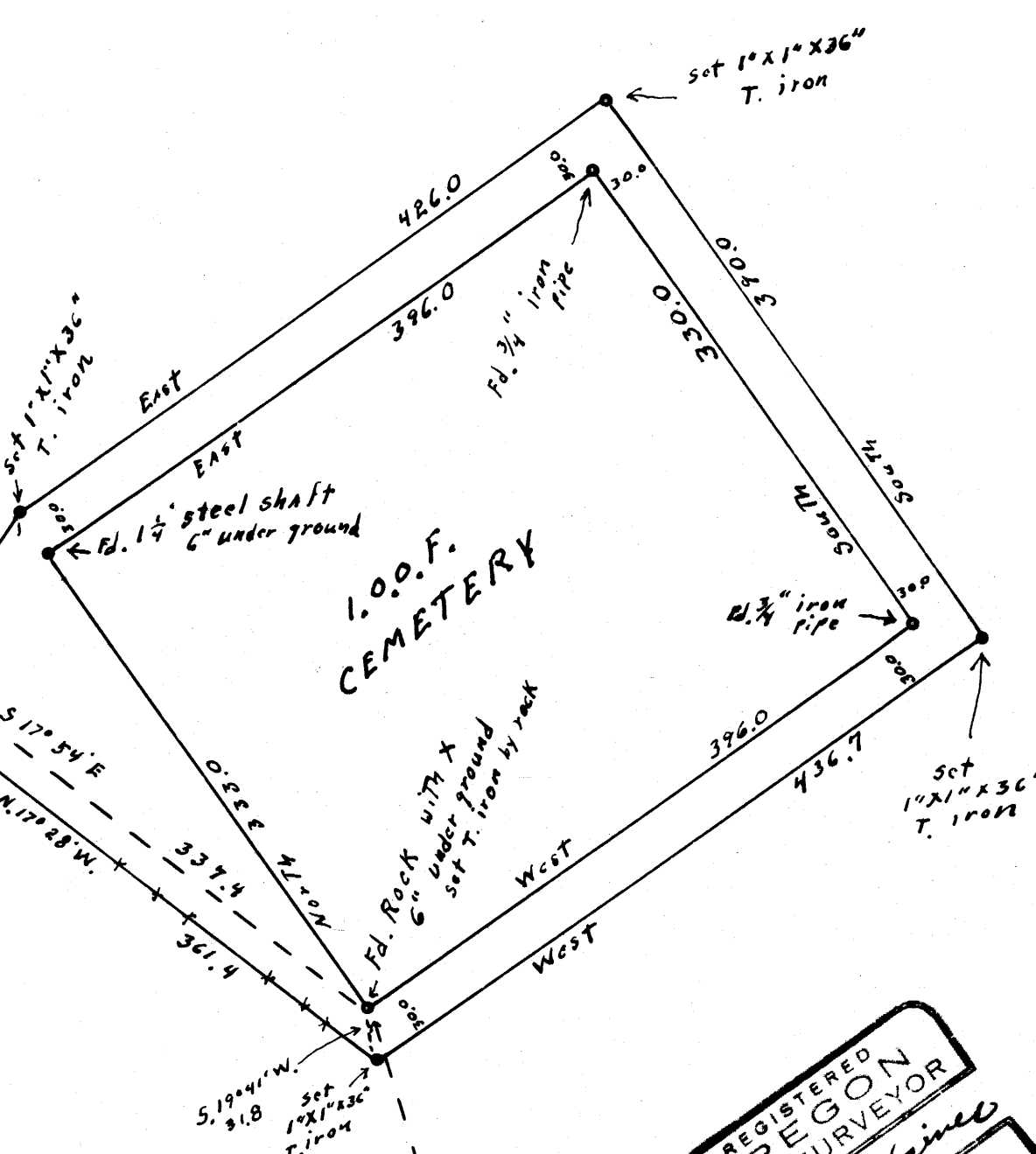
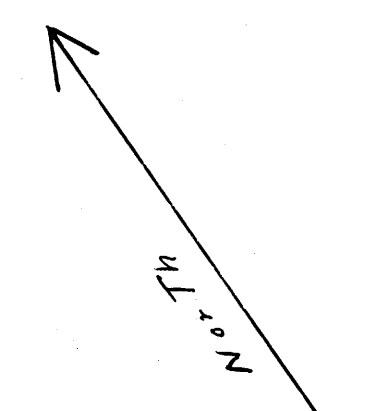


**SURVEY FOR DEED DESCRIPTION**  
 SECTS. 16+17 T.22S., R.5W.  
 for  
 city of DRAIN  
 APRIL 1964

Scale: 1" = 100'



REGISTERED  
 OREGON  
 LAND SURVEYOR  
 Wilford N. Haines  
 MAY 7 1964  
 WILFORD N. HAINES  
 239

FILED  
 RECEIVED  
 MAY 1 1964  
 COUNTY SURVEYOR  
 DOUGLAS COUNTY, ORE.

To 1/2 S 21  
 518°15'W - 1625.6 - "Record not checked"