

I, FRED M. DARBY, COUNTY SURVEYOR OF DOUGLAS COUNTY OREGON, DO HEREBY CERTIFY THAT THE WITHIN COPY OF A PORTION OF T. 22 S., R. 5 W. IS A TRUE AND CORRECT PHOTO COPY OF A MAP FURNISHED BY "WHIPPLE LUMBER COMPANY", IN MARCH, 1954.

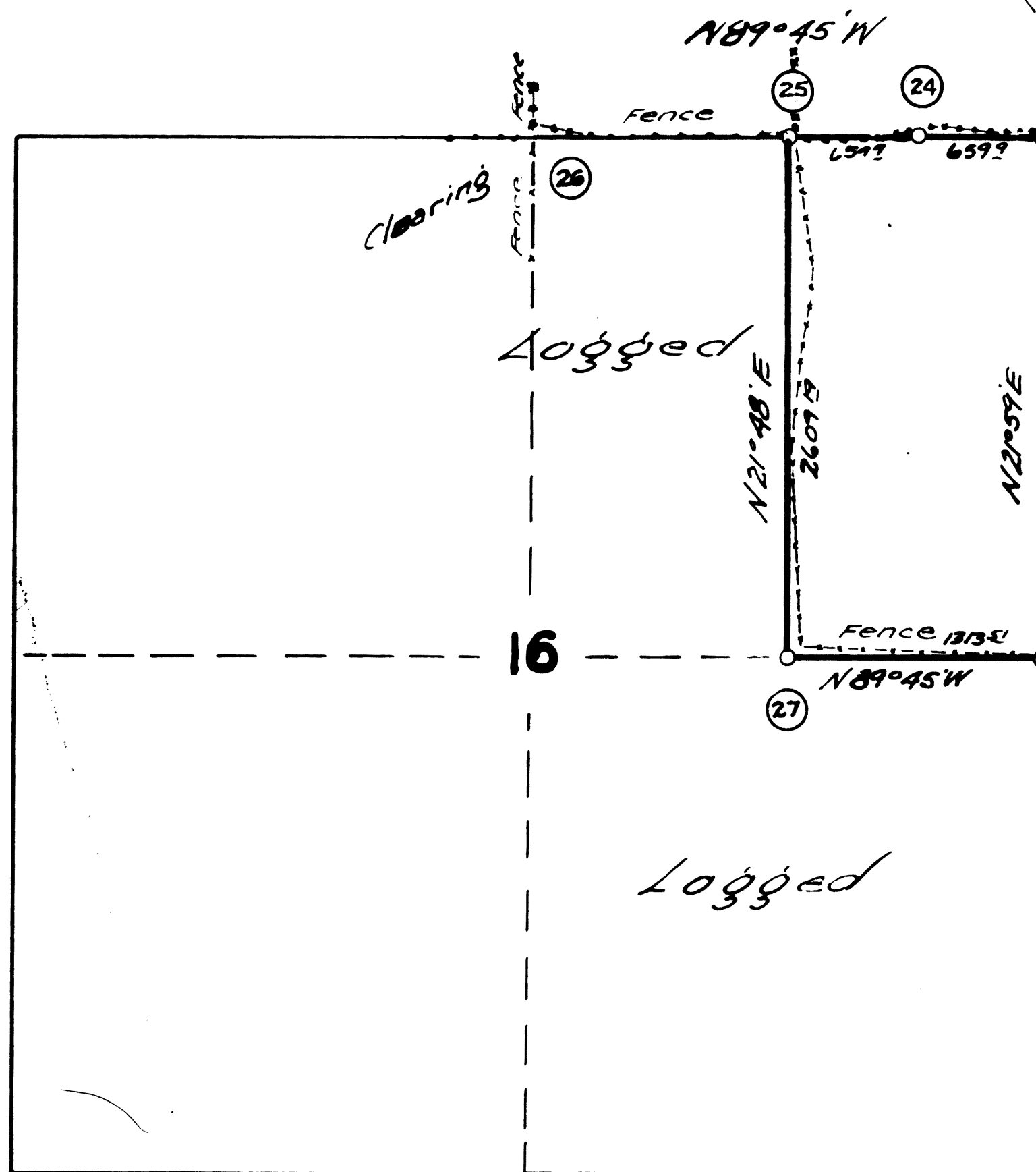
Fred M. Darby
FRED M. DARBY
COUNTY SURVEYOR

TWP. 22 S.R.5 W.
DOUGLAS COUNTY, OREGON
APRIL 1952 BH MCGILICUDDY

SCALE 8 INCHES = 1 MILE

LEGEND
⊙ Govt. corners found or re-set
○ Corners established by this survey

Var. N20°15'E
Whipple Lumber Company
Drain, Oregon



Survey Notes & Corner Data

- 21 Post and iron pin Original B.T.S. -
Fir 6" N 56° W 25 lks. Now 30"
L 3" S 42° E 15 lks (stump)
- 22 Post 1/16 Corner
Bearing trees -
Fir 10" N 41° E 178 Feet Mkd 1/16 S BT
Fir 18" S 60° W 78 Feet Mkd 1/16 S BT
- 23 Post & Iron pipe
L 12" N 70° W 53 lks. Original
All others destroyed
New bearing trees -
Cedar 16" S 37° E 132 Feet dist
Mkd T 22 S R SW S 15 RPBT
Fir 24" N 42° E 20 Feet dist
Mkd T 22 S R SW S 10 RPBT
Fir 32" S 7° W 78 Feet dist
Mkd T 22 S R SW S 16 RPBT
- 24 Post, Single proportion
No bearing trees
- 25 Post 1/16 Corner
Fir 20" S 60 1/2° W 167 Feet dist
Mkd 1/16 S BT
Fir 20" 4° W 428 Feet dist
Mkd 1/16 S BT
- 26 Fence corner 3 Fences
Found Black Oak stumps of original
- 27 Oak post 4" x 4" x 30" long
No bearing trees
- 28 Post Iron pipe Original
Fir 10" S 48° E 33 lks Now stump 34"
Fir 36" S 48° W 57 lks Now 50" tree

Survey Notes & Corner Data

- 15 Stone at fence corner Original
Bearing trees -
Black Oak 40" N 9° E 21 lks dist
Black Oak 18" S 32° W 59 lks (dead)
Black Oak 12" S 32° E 75 lks (destroyed)
Fir 20" N 27° W 131 lks (down and rotten)
- 14 Post & Iron pipe
Black Oak 20" N 53° E 56 lks (destroyed)
Fir 40" N 15° W 50 lks (stump - rescribed)
- 15 Original B.T.S. destroyed
Post & 1" x 5" - 0" Iron pipe
Fir 30" N 10° W 28 Feet dist
Mkd T 22 S R SW S 10 RPBT
Fir 30" S 26° W 413 Feet Mkd T 22 S R SW S 15 RPBT
Fir 32" S 31° E 478 Feet Mkd T 22 S R SW S 14 RPBT
Fir 26" N 25° E 25 Feet Mkd T 22 S R SW S 11 RPBT
- 16 New post & 1" x 5" - 0" pipe for corner
Original B.T.S. -
Fir 24" S 65° W 32 lks (Scribed on bark)
Now 36"
Fir 24" N 50° E 34 lks (Scribed burned)
Now 40"
- 17 New post & Iron pipe - 5" feet W of fence corner
Original B.T.S. -
Cedar 48" N 76° E 26 lks (Now stump)
All other bearing trees destroyed
- 18 Post in fence post line - Set by single proportion
No bearing trees
- 19 Post & Rocks in original position
Original B.T.S. destroyed
- 24 Post & Iron pipe
Set by single proportion
Original B.T.S. destroyed
New bearing trees -
10" Fir N 32 1/2° E 235 Feet dist Mkd 1/4 S RPBT
24" Fir S 12° W 405 Feet dist Mkd 1/4 S RPBT

Survey Notes & Corner Data

- 6 Post original B.T.S. still standing
F 36" N 73° E 221 lks Now 16"
F 34" N 27° E 256 lks Now 50"
Trees were scribed on bark and
burned off.
- 7 Post at junction of two fences
Original bearing trees -
Fir 30" N 55° W 16 lks (defaced stump)
Fir 30" N 12° E 134 lks (burned windfall)
Fir 50" S 70° E 45 lks (burned stump)
Fir 15" S 28° W 82 lks (destroyed)
Some old and new scribing on a Fir in SW app 100'
but not original. No B.T.S. added
- 8 Post - found one bearing tree
Fir 8" N 41° W 200 lks (Now 40" Fir)
No scribe visible
Fir 8" N 40° E 104 lks (destroyed)
- 9 New post & Iron bearing
Original bearing trees
Cedar 24" N 46° E 62 lks (windfall-scribed)
Cedar 24" N 9° W 61 lks (stump - rescribed)
Maple 24" S 10° E 10 lks (destroyed)
Cedar 8" S 32° W 57 lks (stump in creek)
White Fir 30" S 76° W 75 Feet dist
Not an original but an old B.T.
- 10 Post Original B.T.S.
Fir 40" N 7° E 109 lks dist (Now 52")
Fir 8" S 76° W 110 lks dist (Now 34")
- 11 Fence post corner
Fir 60" N 64° E 37 lks (snag stump)
Fir 34" S 32° W 140 lks (stump)
Scribed on bark
- 12 Post 1/16 Corner
No bearing trees

Survey Notes & Corner Data

- 1 Post 4 bearing trees
Original corner
- 2 Post 2 bearing trees Original corner
Fir 35" N 47° E 57 lks dist. Stump
Fir 40" N 75° W 79 lks dist. burned windfall
- 3 Old post found. Placed new post 5" x 5" x 5" - 0" and
Iron pin 1/8" x 16" long
Original B.T. -
Fir 20" S 18° E 68 lks dist. Windfall-scribed
All other bearing trees destroyed
New bearing trees -
14" Chinquapin S 30° E 148 Feet dist
Mkd T 22 S R SW S 7 BT
42" Fir S 70° W 40 Feet dist
Mkd T 22 S R SW S 12 BT
38" Fir N 74° W 57 Feet dist
Mkd T 22 S R SW S 1 BT
18" Cedar N 15° 30' E 46 Feet dist
Mkd T 22 S R SW S 6 BT
- 4 Original bearing trees destroyed
Corner estab. by single proportion between
3 & 5 Scribed B.T.S. -
Fir 22" S 62° E 438 Feet dist
Mkd S 1/2 RPBT
Fir 34" N 33° W 818 Feet dist
Mkd S 1/4 RPBT
- 5 Original bearing trees destroyed
Corner estab. by original blaze intersection
and found rock
New post in pile of rocks
Scribed B.T.S. -
Cedar 24" S 37° E 284 Feet dist
Mkd T 22 S R SW S 12 RPBT
13" Fir S 85° W 248 Feet dist
Mkd T 22 S R SW S 11 RPBT
54" Fir N 46° W 498 Feet dist
Mkd T 22 S R SW S 2 RPBT
30" Fir N 16° E 194 Feet dist
Mkd T 22 S R SW S 1 RPBT

