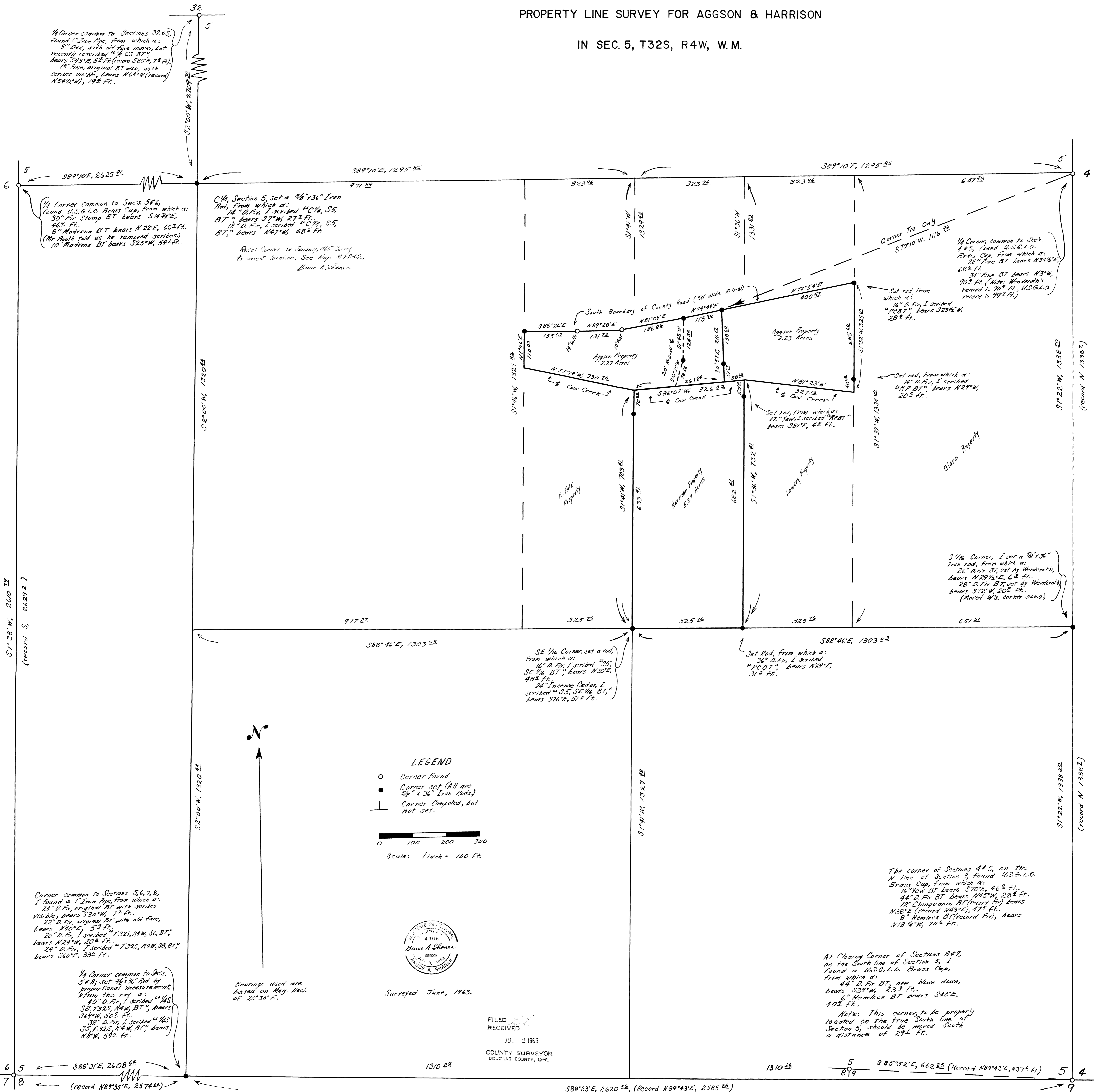


PROPERTY LINE SURVEY FOR AGGSON & HARRISON

IN SEC. 5, T32S, R4W, W.M.



1/4 Corner common to Sections 32 & 5, found 1" Iron Pipe, from which a: 8" Oak, with old face marks, but recently rescribed "4 CS BT", bears S33°25' E, 85 ft. (record S30°25' 7 1/2 ft.); 18" Pine, original BT also, with scribes visible, bears N64°W (record N54°2'W), 17 1/2 ft.

1/4 Corner common to Secs 5 & 6, found U.S.G.L.O. Brass Cap, from which a: 30" Fir Stump BT bears S14°34'E, 46 1/2 ft.; 8" Madrone BT bears N22°E, 66 1/2 ft. (Mr. Booth told us he removed scribes); 10" Madrone BT bears S25°W, 54 1/2 ft.

C1/4, Section 5, set a 5/8" x 3/16" Iron Rod, from which a: 14" D. Fir, I scribed "C1/4, S5", BT, bears S7°W, 27 1/2 ft.; 18" D. Fir, I scribed "C1/4, S5", BT, bears N47°W, 68 1/2 ft. Reset Corner in January, 1963 Survey to correct location. See Map N22-62. Bruce A. Shanan

1/4 Corner, common to Secs. 4 & 5, found U.S.G.L.O. Brass Cap, from which a: 28" Pine BT bears N34°2'E, 68 1/2 ft.; 34" Pine BT bears N3°W, 90 1/2 ft. (Note: Wenderoth's record is 90° ft.; U.S.G.L.O. record is 99 1/2 ft.)

Set rod, from which a: 16" D. Fir, I scribed "PCBT", bears S23 1/2°W, 28 1/2 ft.

S 1/2 Corner, I set a 5/8" x 3/16" Iron Rod, from which a: 26" D. Fir, set by Wenderoth, bears N29 1/2°E, 6 1/2 ft.; 28" D. Fir, set by Wenderoth, bears S72°W, 20 1/2 ft. (Moved W's. corner some.)

SE 1/4 Corner, set a rod, from which a: 16" D. Fir, I scribed "S5, SE 1/4, BT", bears N30°E, 48 1/2 ft.; 24" Incense Cedar, I scribed "S5, SE 1/4, BT", bears S76°E, 57 1/2 ft.

Set Rod, from which a: 36" D. Fir, I scribed "490 BT", bears N69°E, 31 1/2 ft.

LEGEND

- Corner Found
- Corner set (All are 5/8" x 3/16" Iron Rods)
- ⊥ Corner Computed, but not set.

0 100 200 300
Scale: 1 inch = 100 ft.



Surveyed June, 1963.

FILED
RECEIVED
JUL 2 1963
COUNTY SURVEYOR
DELLAS COUNTY, ORE

Corner common to Sections 5, 6, 7, 8, I found a 1" Iron Pipe, from which a: 24" D. Fir, original BT with scribes visible, bears S30°W, 7 1/2 ft.; 22" D. Fir, original BT with old face, bears N40°E, 5 1/2 ft.; 20" D. Fir, I scribed "T32S, R4W, S6, BT", bears N24°W, 20 1/2 ft.; 24" D. Fir, I scribed "T32S, R4W, S8, BT", bears S60°E, 33 1/2 ft.

1/4 Corner common to Secs. 5 & 8, set 5/8" x 3/16" Rod by proportional measurements, from this rod a: 40" D. Fir, I scribed "1/4 S, S8, T32S, R4W, BT", bears S64°W, 50 1/2 ft.; 38" D. Fir, I scribed "1/4 S, S5, T32S, R4W, BT", bears N8°W, 59 1/2 ft.

Bearings used are based on Mag. Decl. of 20°30'E.

The corner of Sections 4 & 5, on the N line of Section 5, found U.S.G.L.O. Brass Cap, from which a: 16" New BT bears S70°E, 46 1/2 ft.; 44" D. Fir BT bears N45°W, 28 1/2 ft.; 12" Chinquapin BT (record Fir) bears N38°E (record N43°E), 47 1/2 ft.; 8" Hemlock BT (record Fir), bears N18 1/4°W, 70 1/2 ft.

At Closing Corner of Sections 4 & 5, on the South line of Section 5, I found a U.S.G.L.O. Brass Cap, from which a: 44" D. Fir BT, new blow down, bears S39°W, 23 1/2 ft.; 6" Hemlock BT bears S40°E, 40 1/2 ft.

Note: This corner, to be properly located on the true South line of Section 5, should be moved South a distance of 24 1/2 ft.

85°52'E, 662 1/2 (Record N89°43'E, 637 1/2 ft.)

S80°23'E, 2620 1/2 (Record N89°43'E, 2585 1/2 ft.)