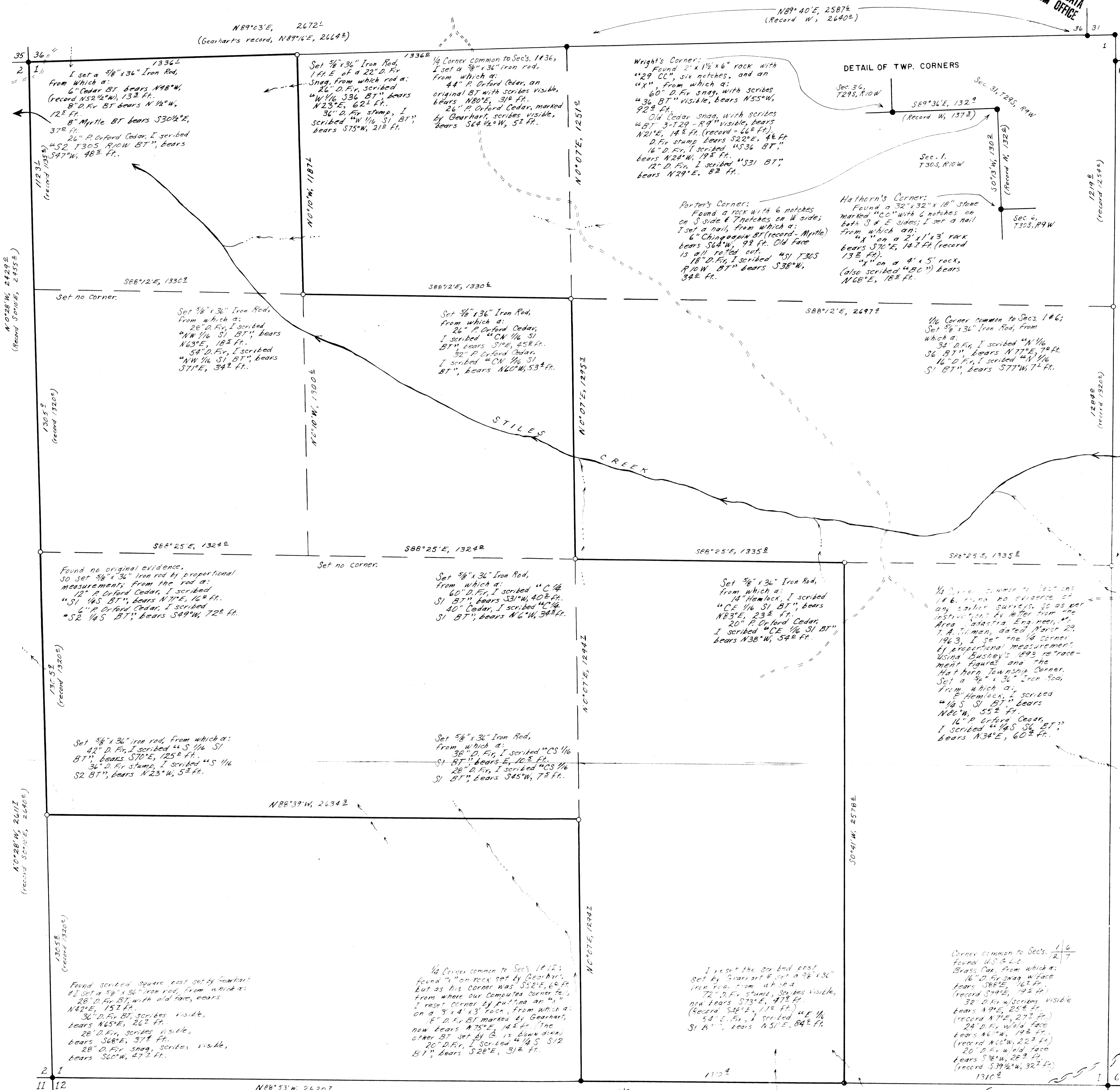


SUBDIVISION OF SECTION 1, T30S, R10W, W.M., COOS COUNTY, OREGON

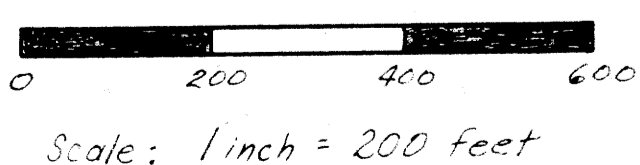
FOR
EVANS PRODUCTS COMPANY

COUNTY SURVEYORS FILE DATA
DO NOT REMOVE FROM OFFICE

COUNTY SURVEYORS FILE DATA
DO NOT REMOVE FROM OFFICE



- LEGEND
- Corner found
 - Corner set
 - Evans' Property Line, Blazed & painted rod.
 - ~ Stream
 - ~ Ridge top



COUNTY SURVEYORS FILE DATA
DO NOT REMOVE FROM OFFICE

COUNTY SURVEYORS FILE DATA
DO NOT REMOVE FROM OFFICE

Bruce A. Shanon
Surveyed Jan.-Apr., 1963

Bearings based on
Gearhart's survey on
Southern Section line.