

26

25

35

36

R6W
R5W

T27S R6W W.M.
T28S R6W " "

R6W
R5W

12

T28S R5W

13

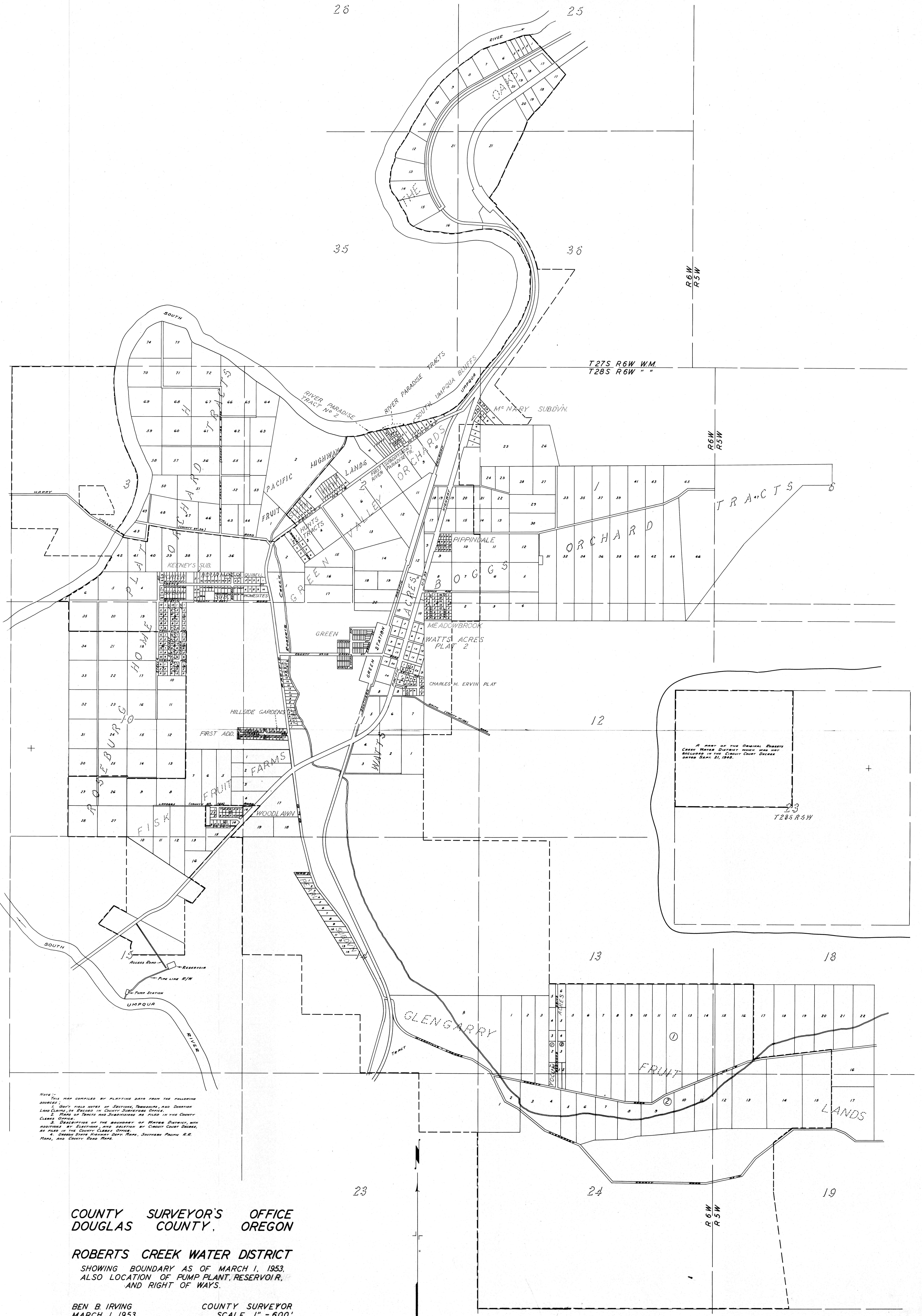
18

R6W
R5W

23

24

19



NOTE: THIS MAP COMPILED BY PLYING DATA FROM THE FOLLOWING SOURCES:
 1. GUY'S FIELD NOTES OF SECTIONS, TOWNSHIPS, AND DONATION LAND CLAIMS, ON RECORD IN COUNTY SURVEYORS OFFICE.
 2. MAPS OF TRACTS AND SUBDIVISIONS AS FILED IN THE COUNTY CLERKS OFFICE.
 3. DESCRIPTION OF THE BOUNDARY OF WATER DISTRICTS WITH ADDITIONS BY ELECTIONS, AND DELETION BY CIRCUIT COURT DECREE, AS FILED IN THE COUNTY CLERKS OFFICE.
 4. OREGON STATE HISTORICAL DATA MAPS, SOUTHERN PACIFIC R.R. MAPS, AND COUNTY ROAD MAPS.

**COUNTY SURVEYOR'S OFFICE
 DOUGLAS COUNTY, OREGON**

ROBERTS CREEK WATER DISTRICT
 SHOWING BOUNDARY AS OF MARCH 1, 1953.
 ALSO LOCATION OF PUMP PLANT, RESERVOIR,
 AND RIGHT OF WAYS.

BEN B. IRVING COUNTY SURVEYOR
 MARCH 1, 1953 SCALE 1" = 600'